



1932 Ford Coupe

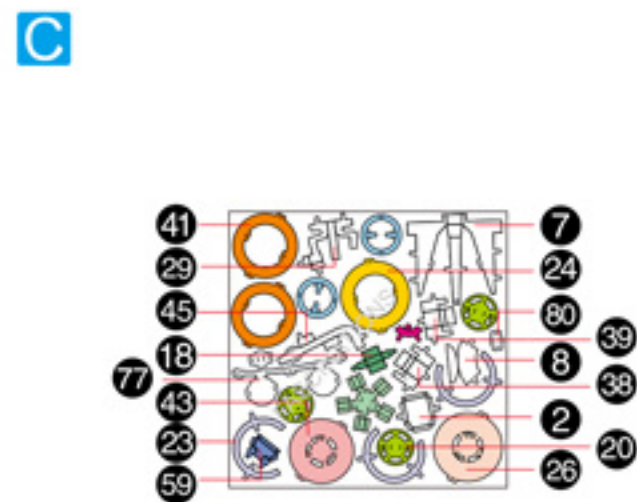
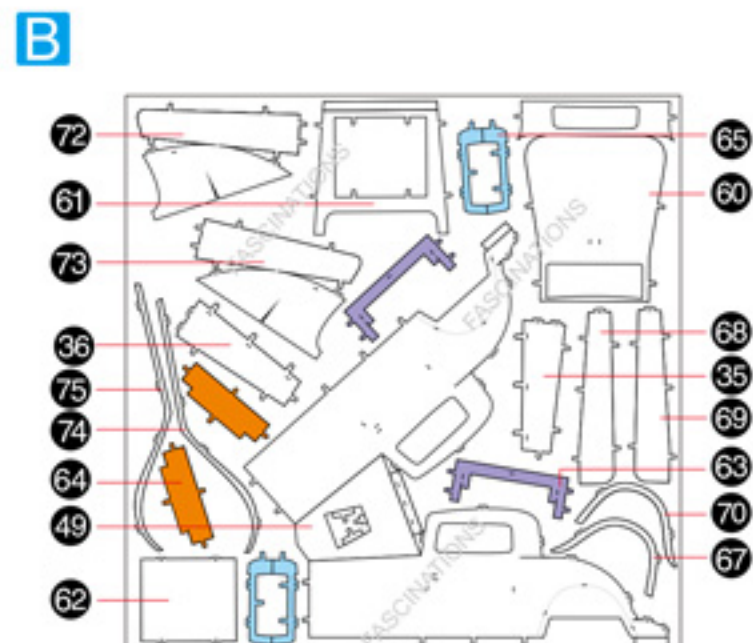
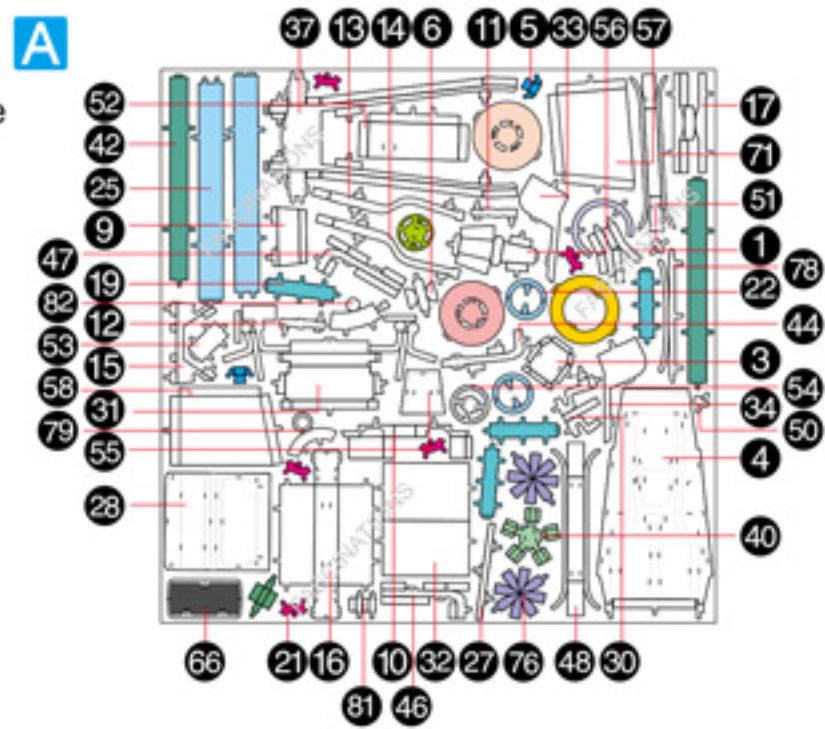
Item No. MMS198



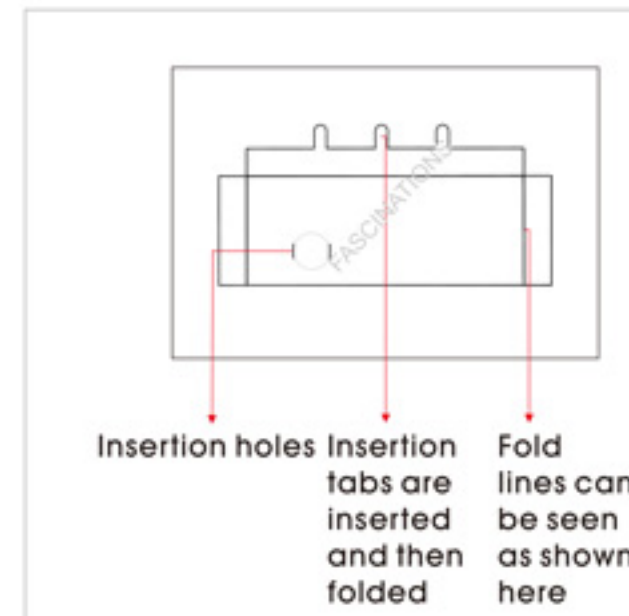
It is highly recommended that you visit www.metalearth.com/360/mms198 to see the completed model before assembling your own

Metal sheets

Parts that are in the same color are duplicates



! In order to avoid possible injury from sharp edges, please carefully discard the metal sheets after parts have been removed



Legends:

- E** Engraved /Color side
- NE** Non-engraved /Silver side
- Attention point
- Insert tab and bend 90 degrees
- Insert tab and twist 90 degrees

Recommended tools:

-Wire cutters: helpful for taking parts from the metal sheets.



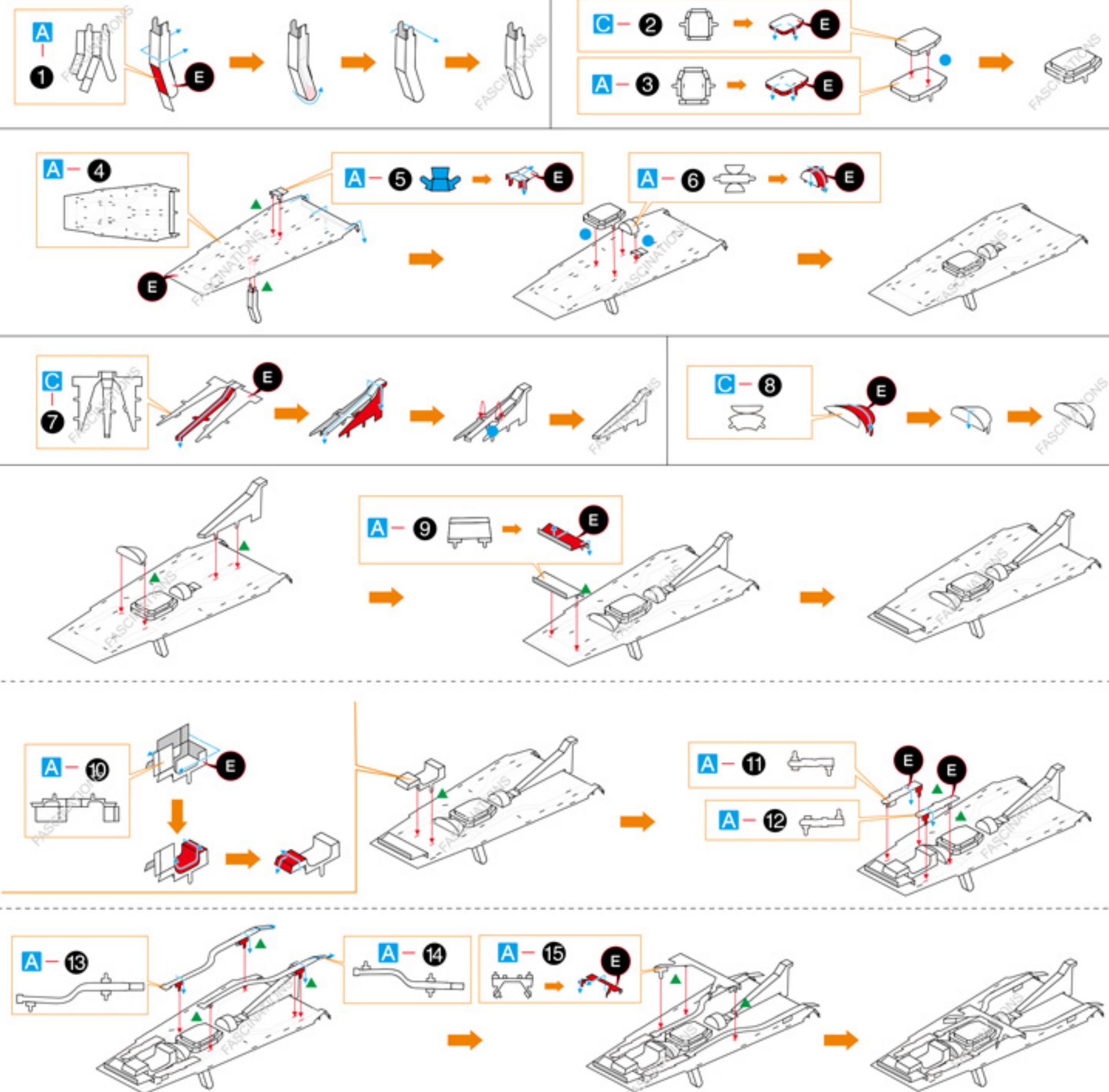
-Tweezers or needle nose pliers: helpful for folding parts, bending and twisting tabs.

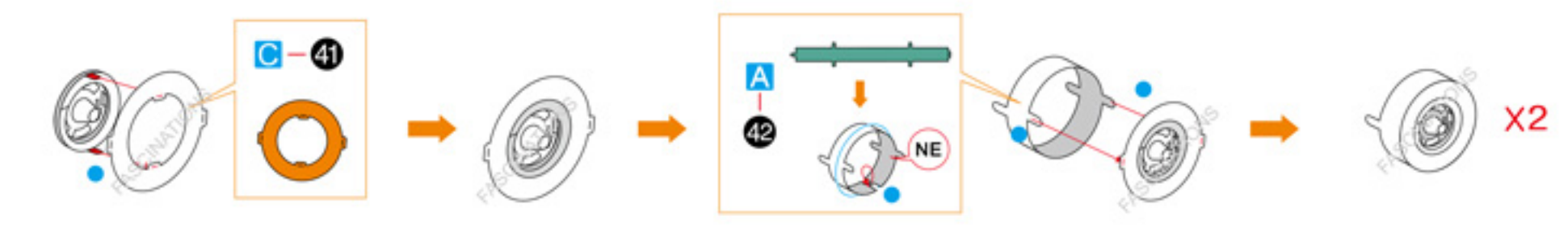
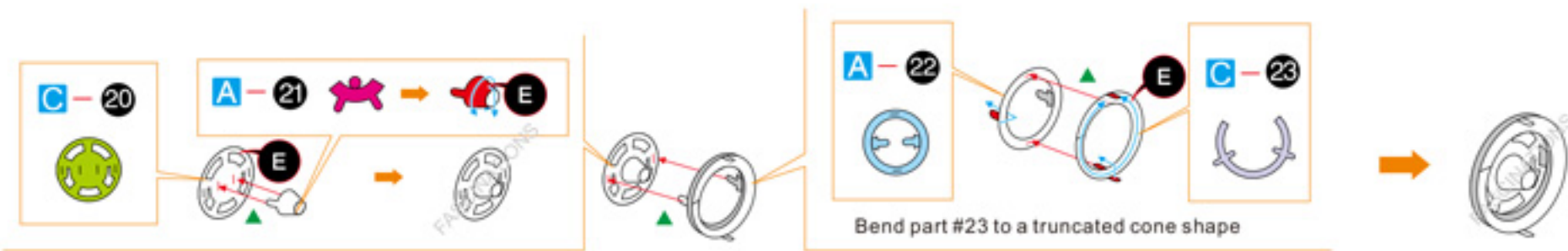
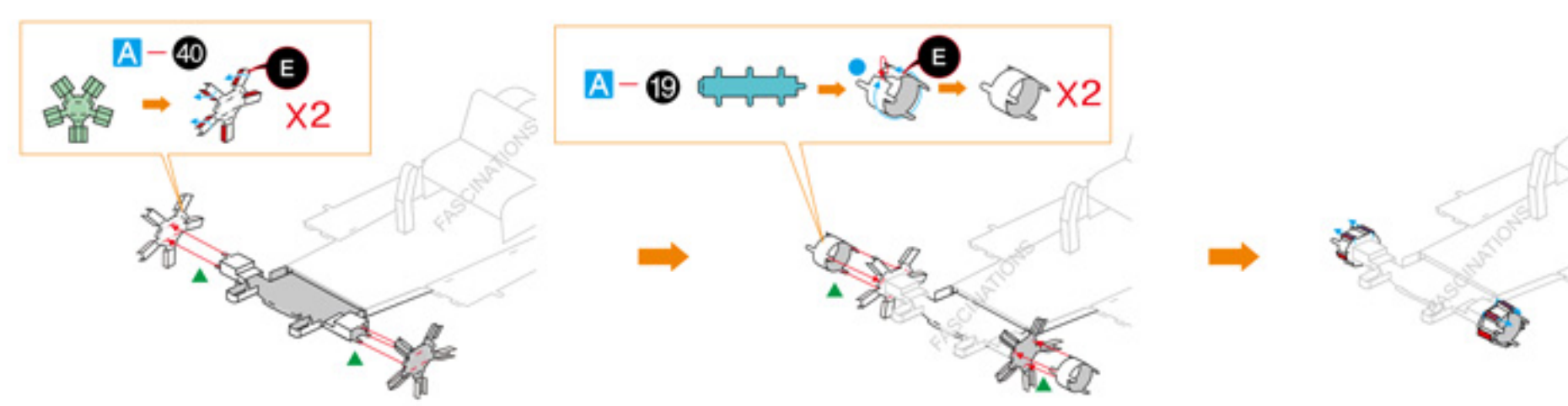
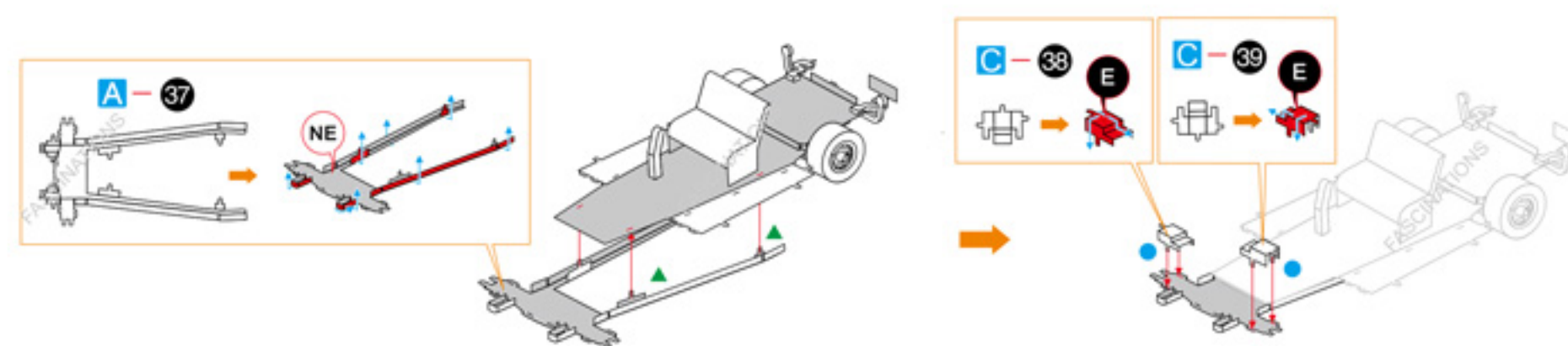
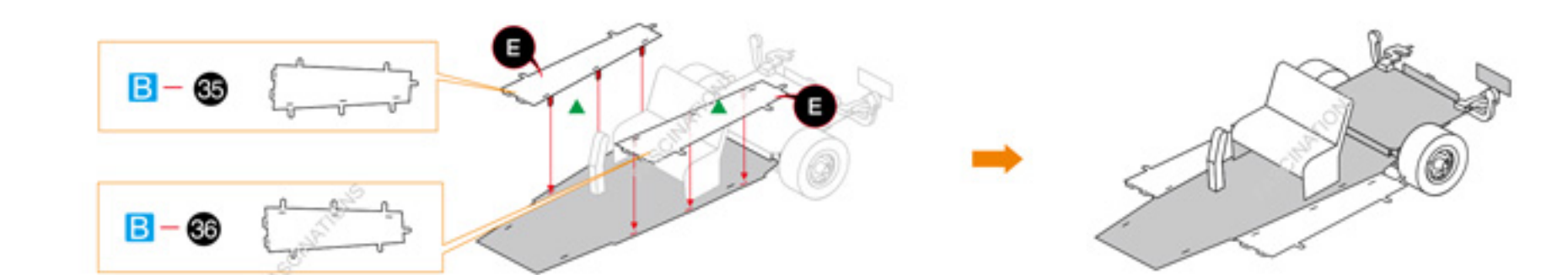
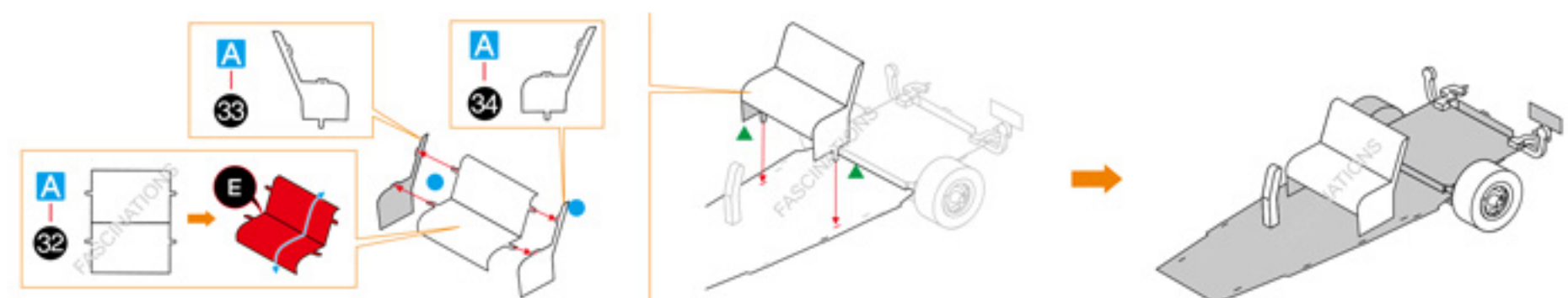
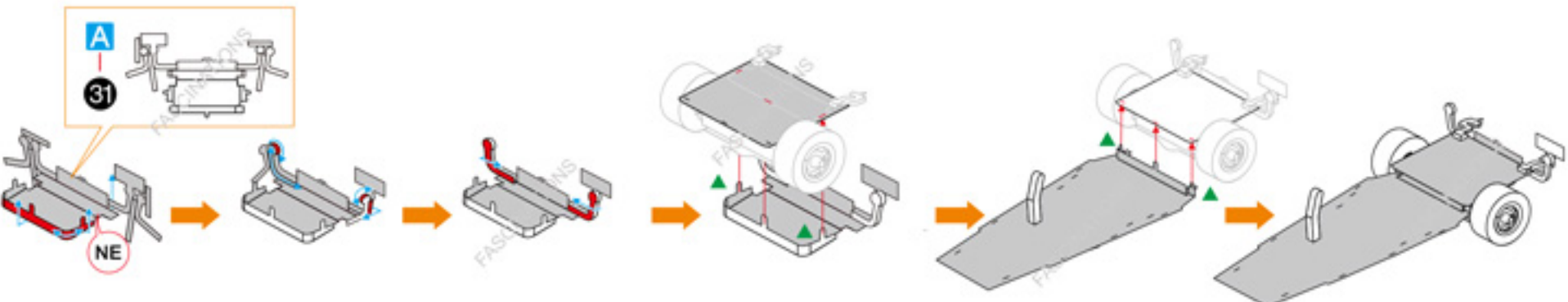
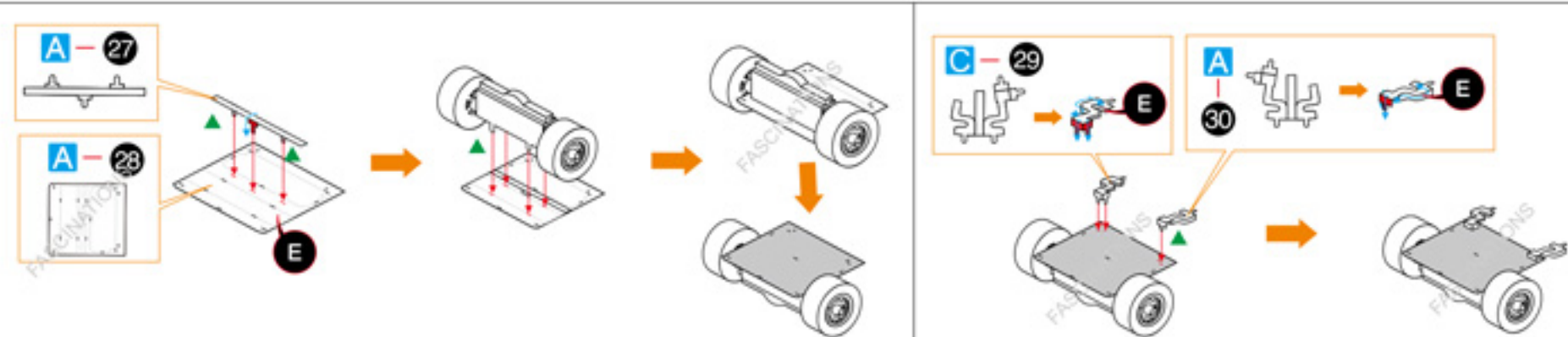
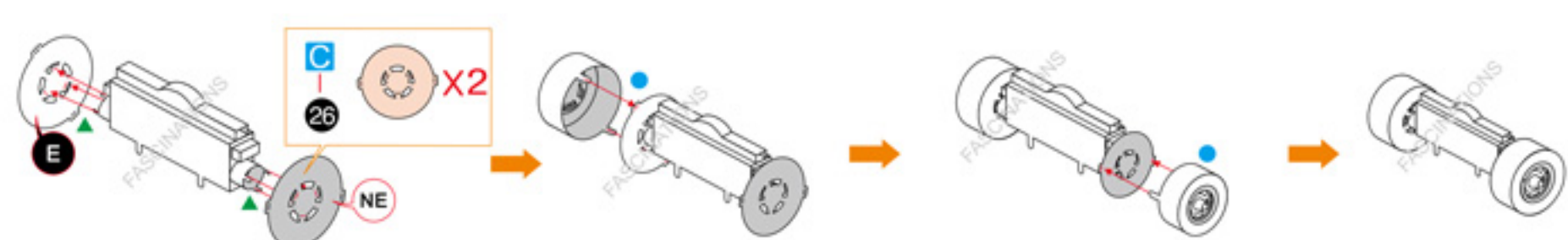
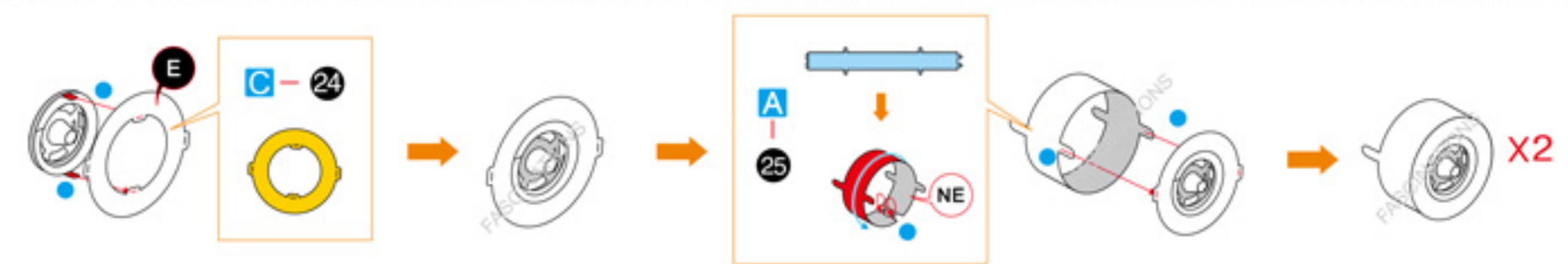
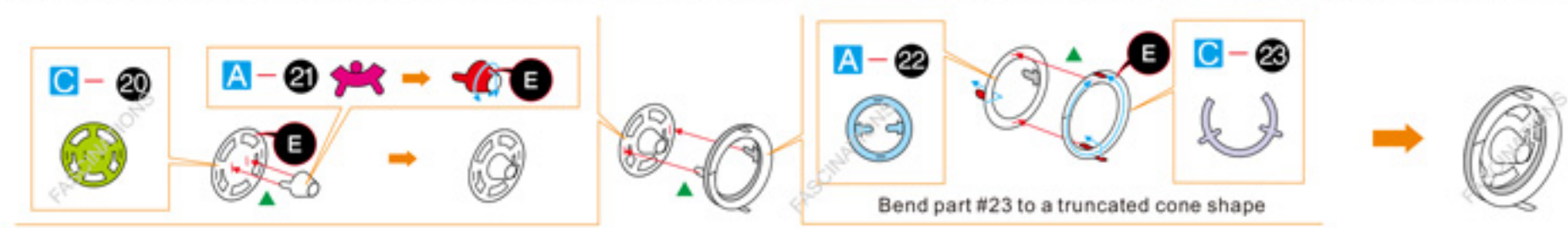
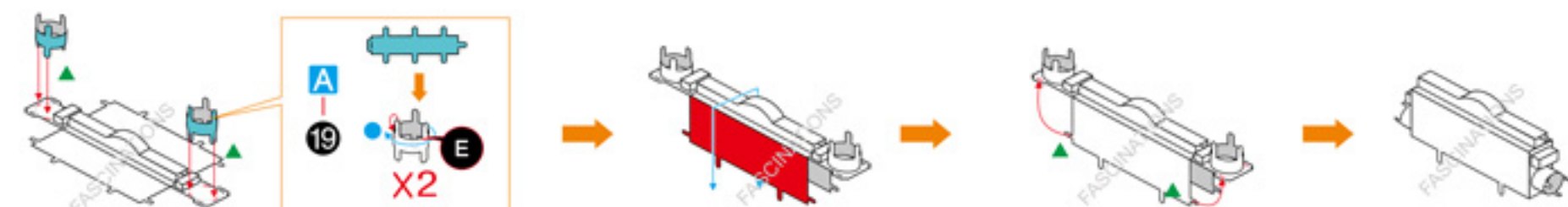
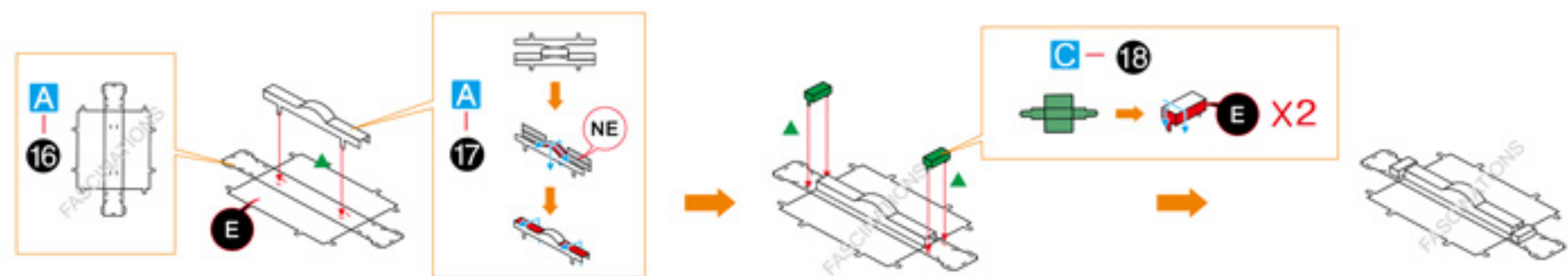


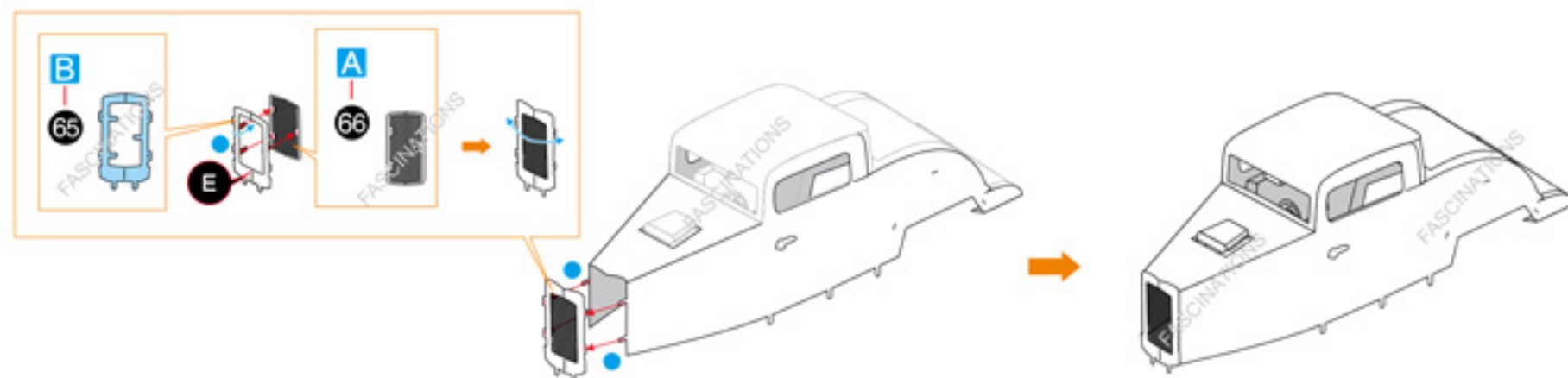
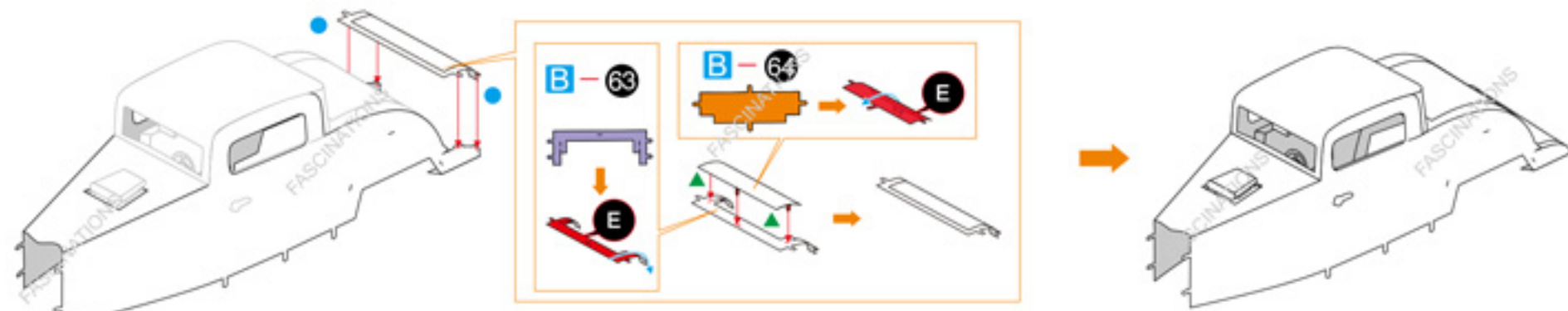
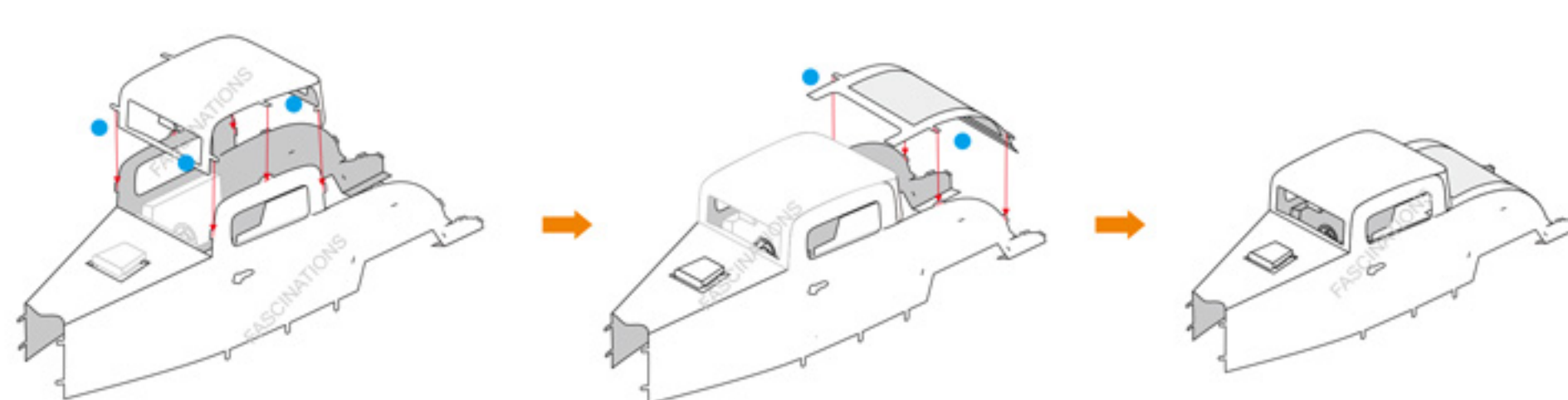
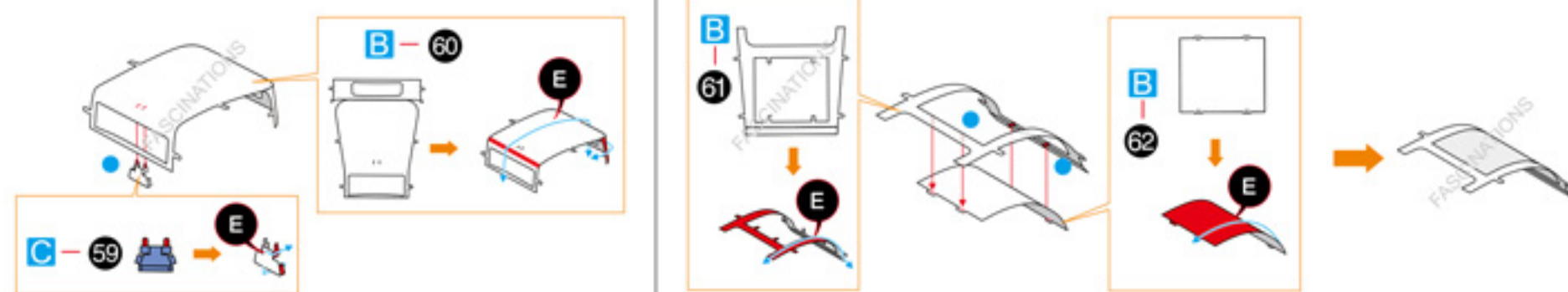
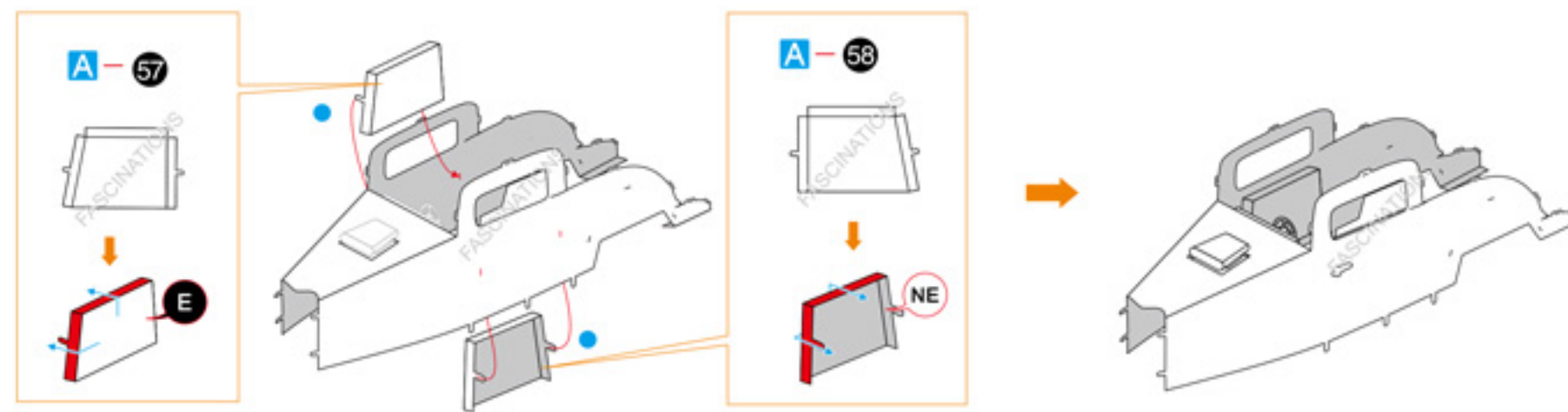
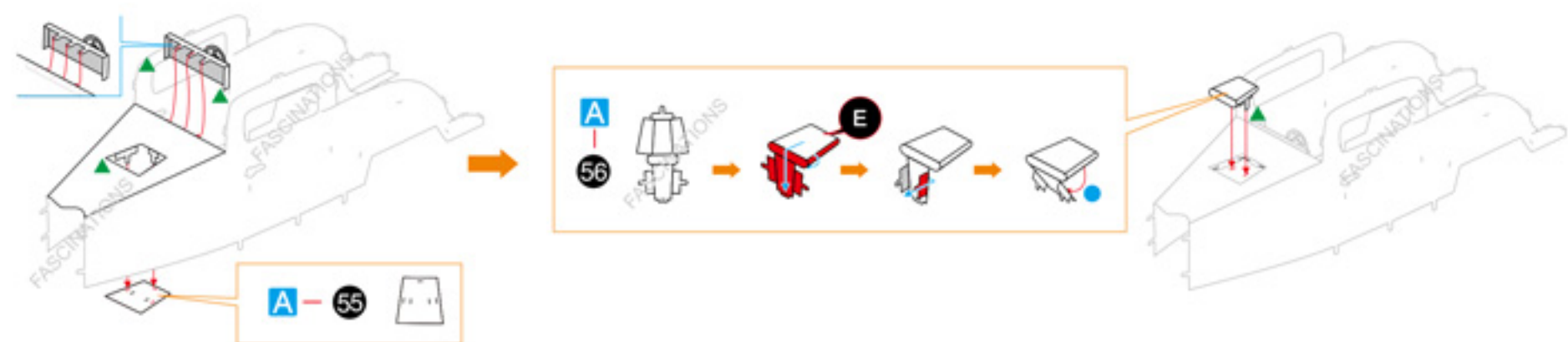
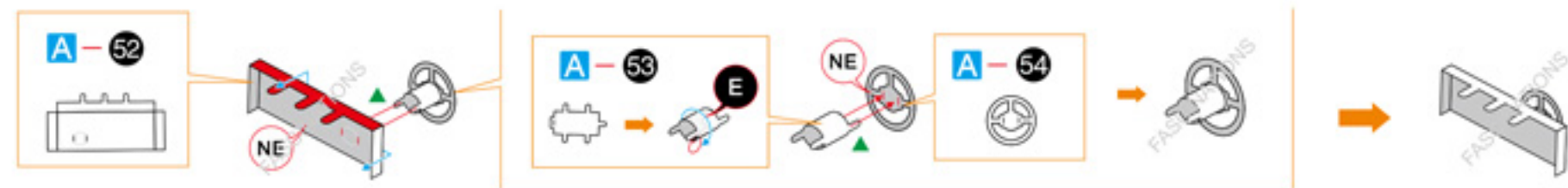
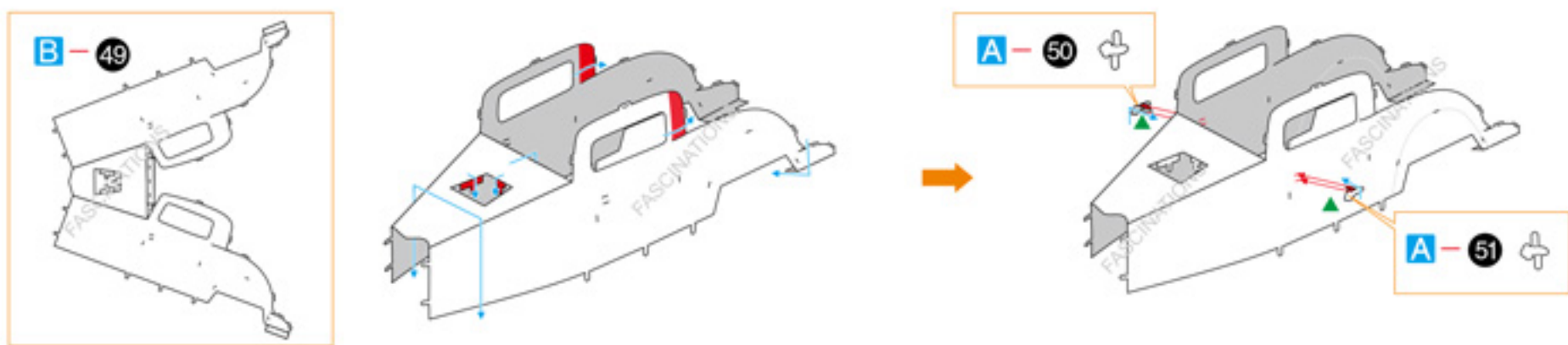
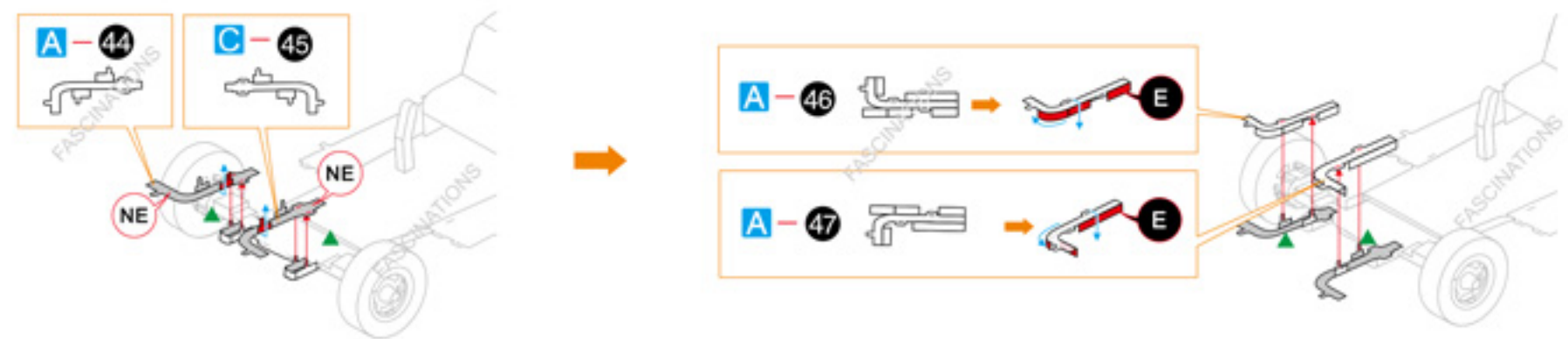
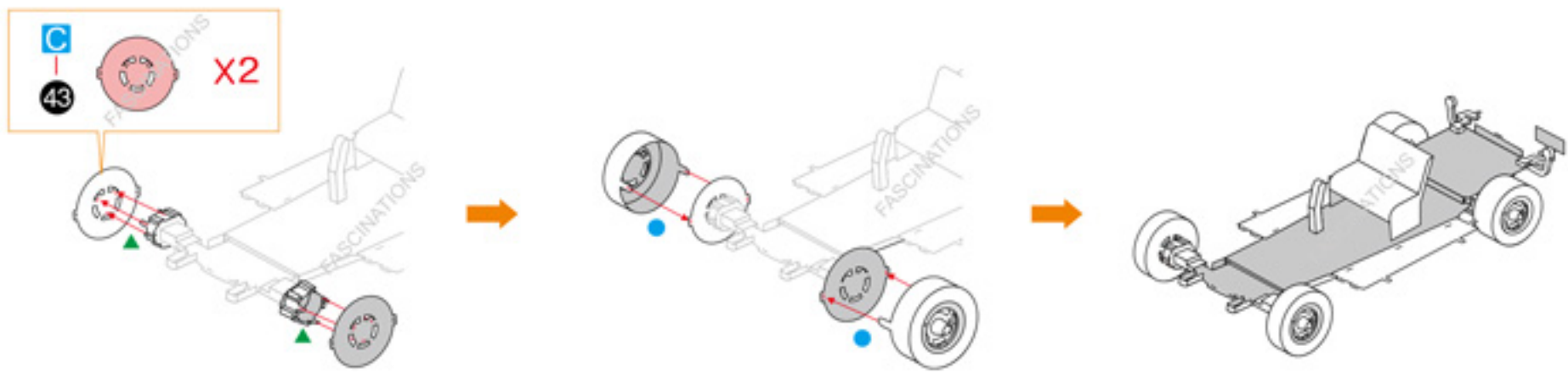
Assembly tip:

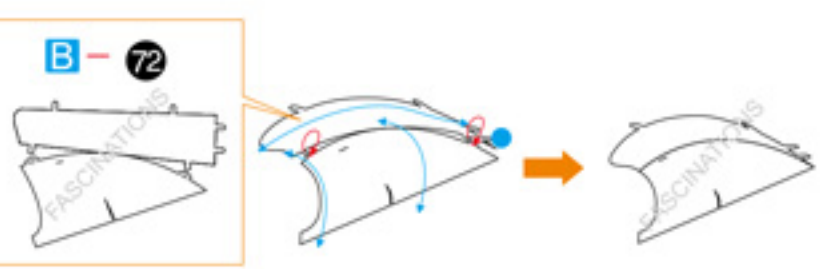
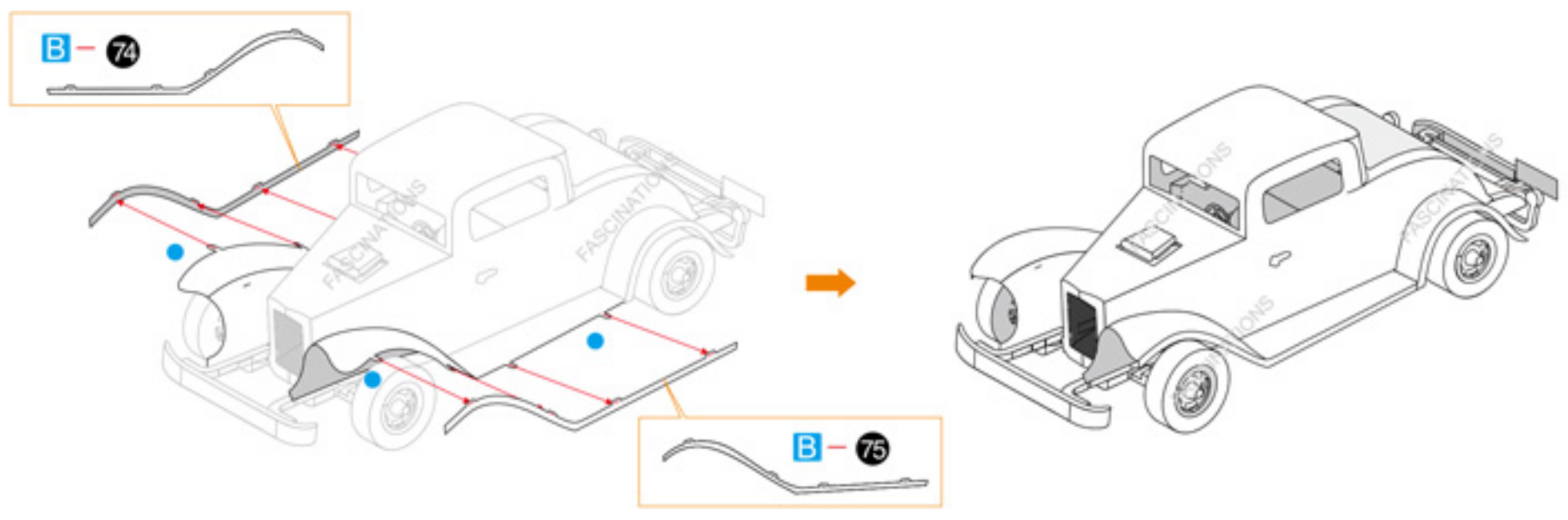
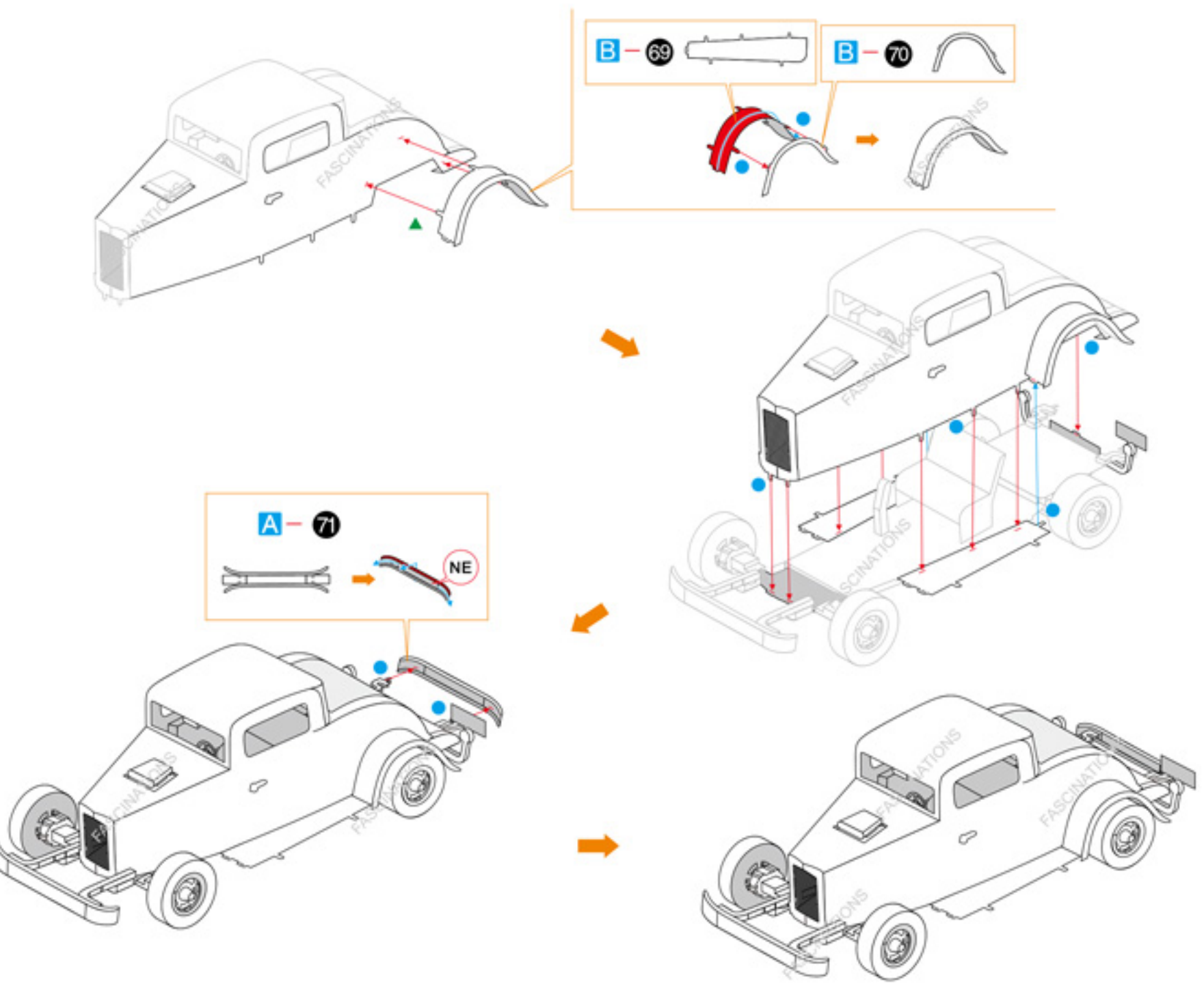
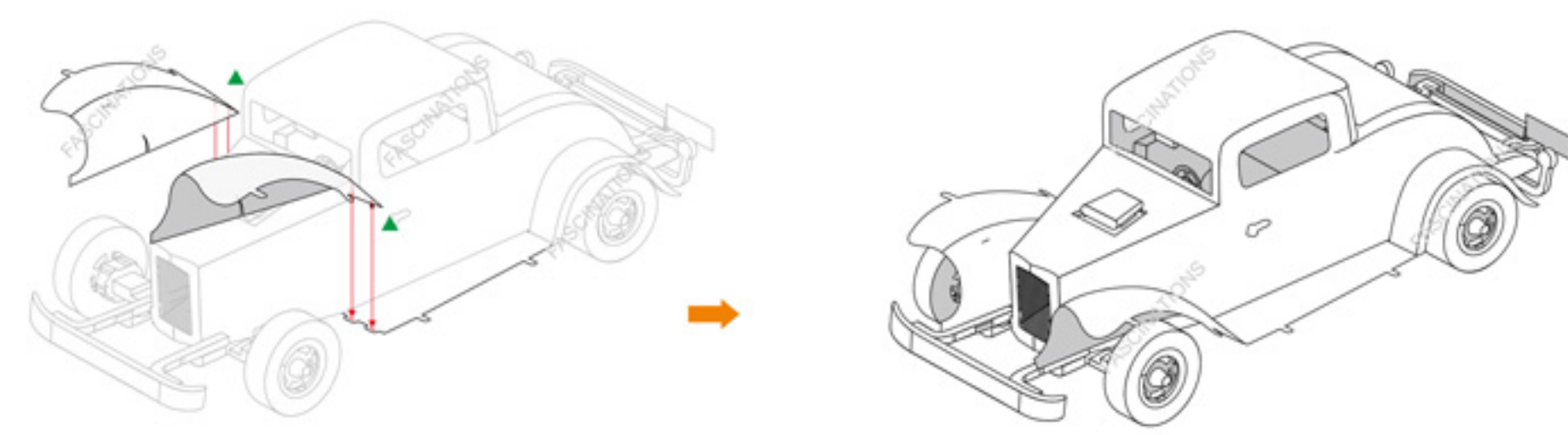
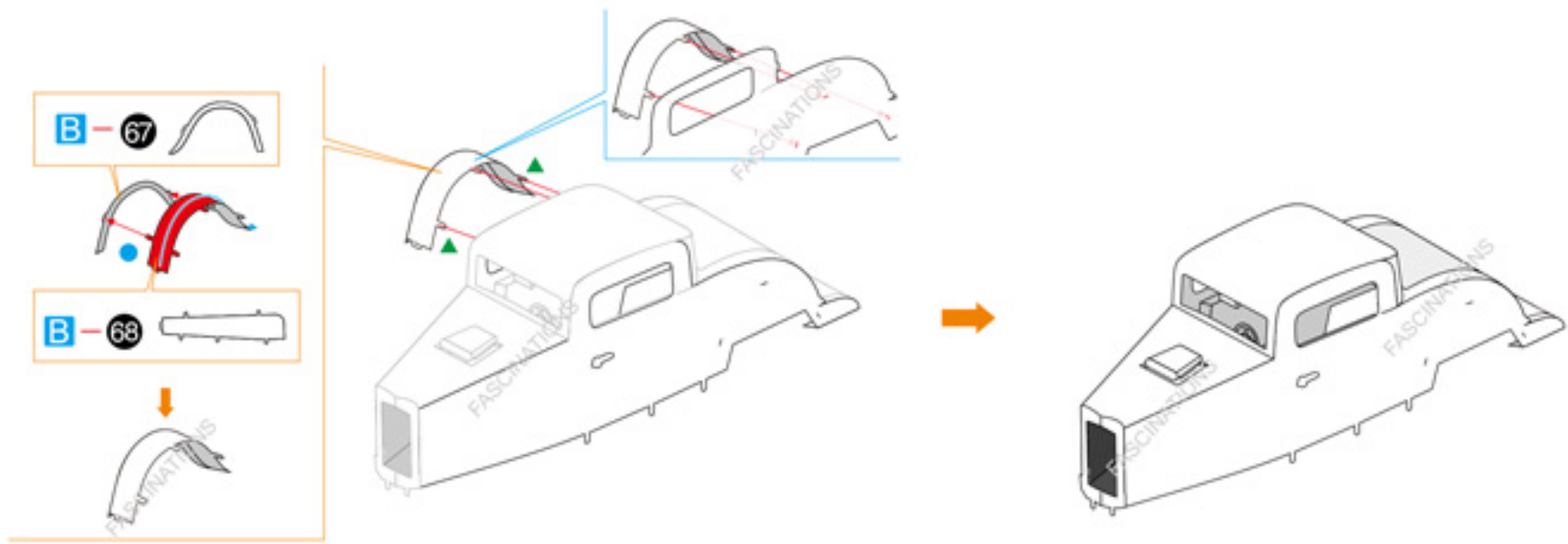
If needed, slightly twist tabs to hold parts together then untwist and bend them down for a nice finish

Assembly Flow Chart









Bend the holes down 45 degrees and the tabs down 90 degrees before connecting them.



Bend the holes down 45 degrees and the tabs down 90 degrees before connecting them.

