



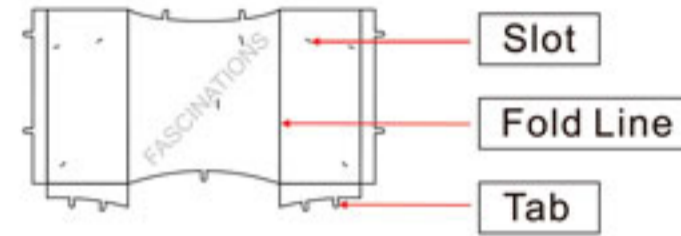
It is highly recommended that you visit www.metalearth.com/360/icx122 to see the completed model before assembling your own

ICX122



IRON THRONE

TO CREATE THE BEST CONNECTIONS



Legends:

- Engraved side
- Non-engraved side
- Attention point
- Insert tab and bend 90 degrees
- Insert tab and twist 90 degrees

Assembly tip:

If needed, slightly twist tabs to hold parts together then untwist and bend them down for a nice finish

Recommended tools:

-Wire cutters: helpful for taking parts from the metal sheets.

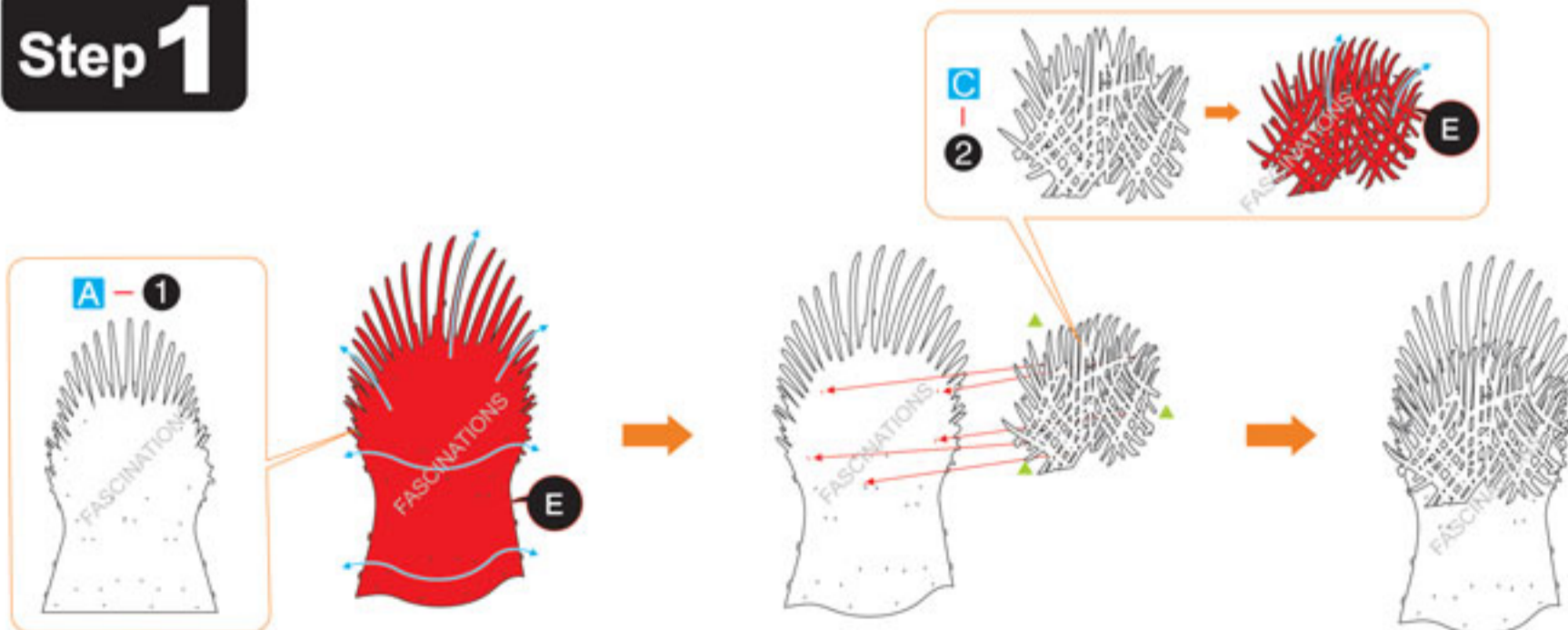


-Tweezers or needle nose pliers: helpful for folding parts, bending and twisting tabs.



ASSEMBLY STEPS

Step 1



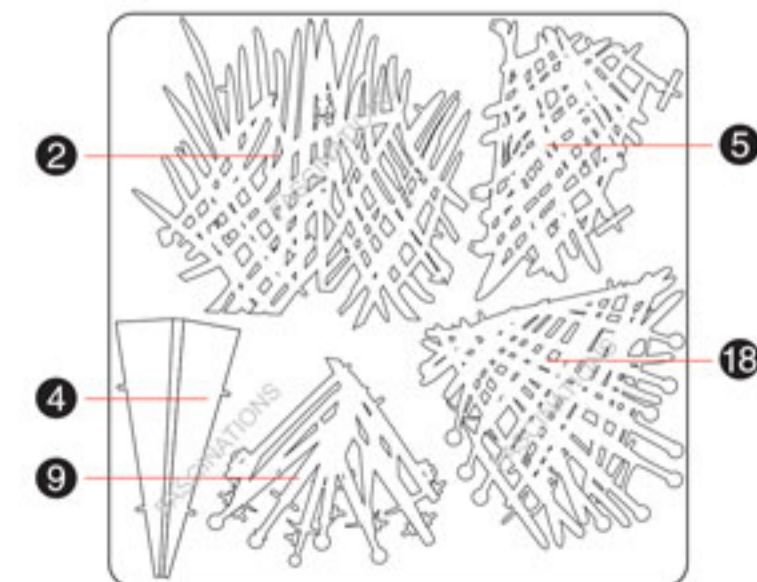
METAL SHEET A



METAL SHEET B

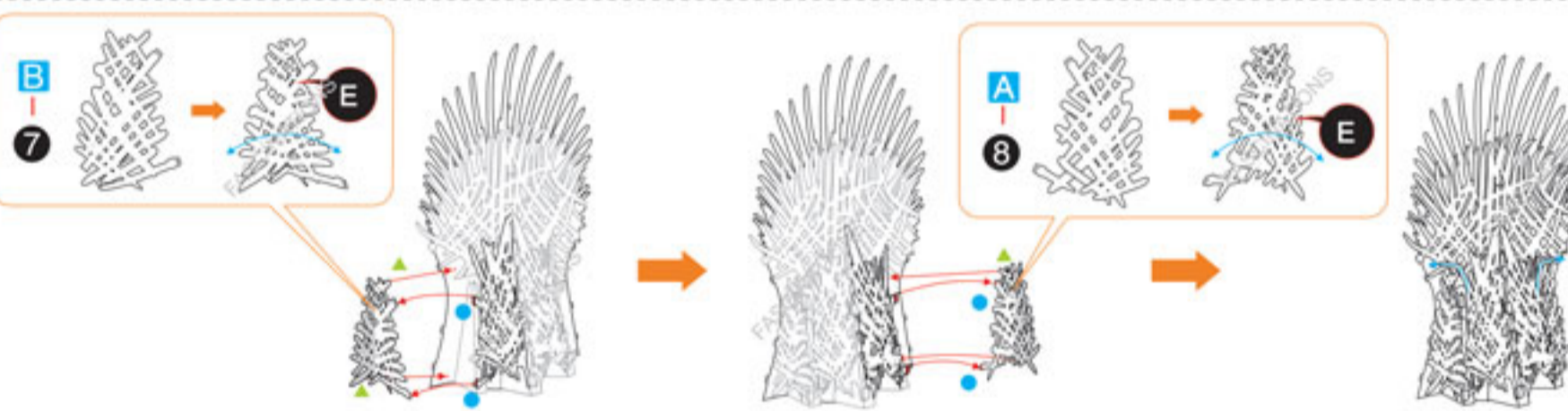
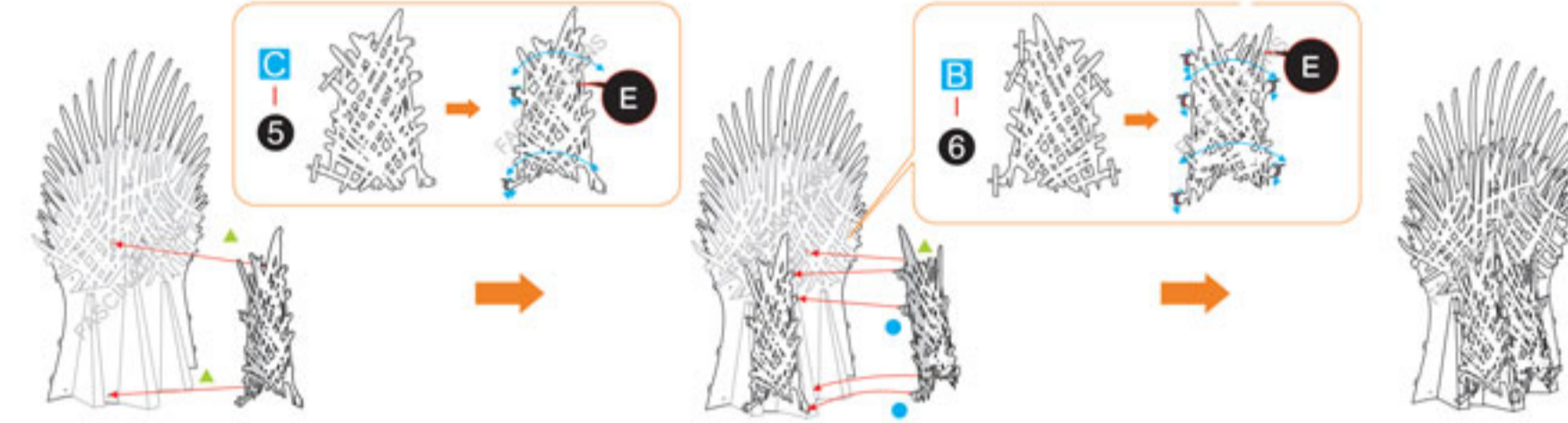
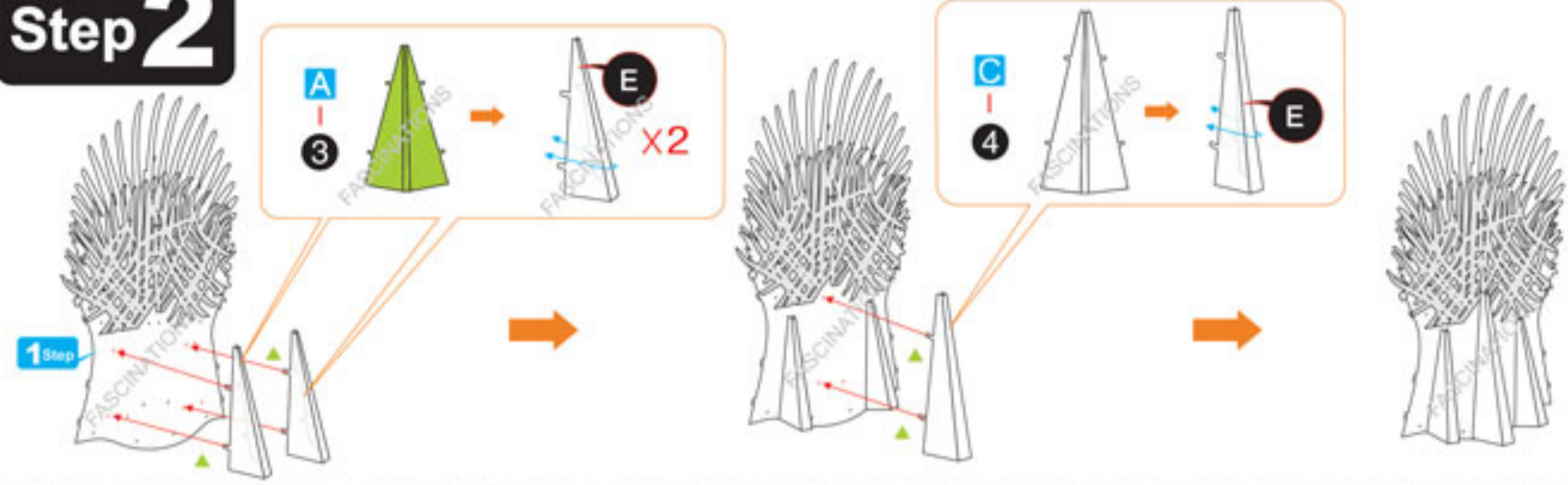


METAL SHEET C

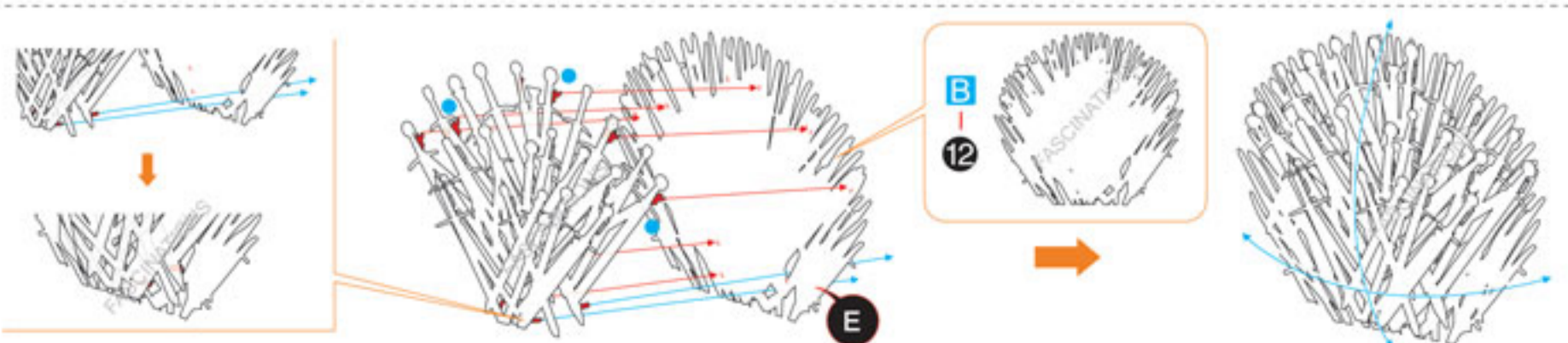
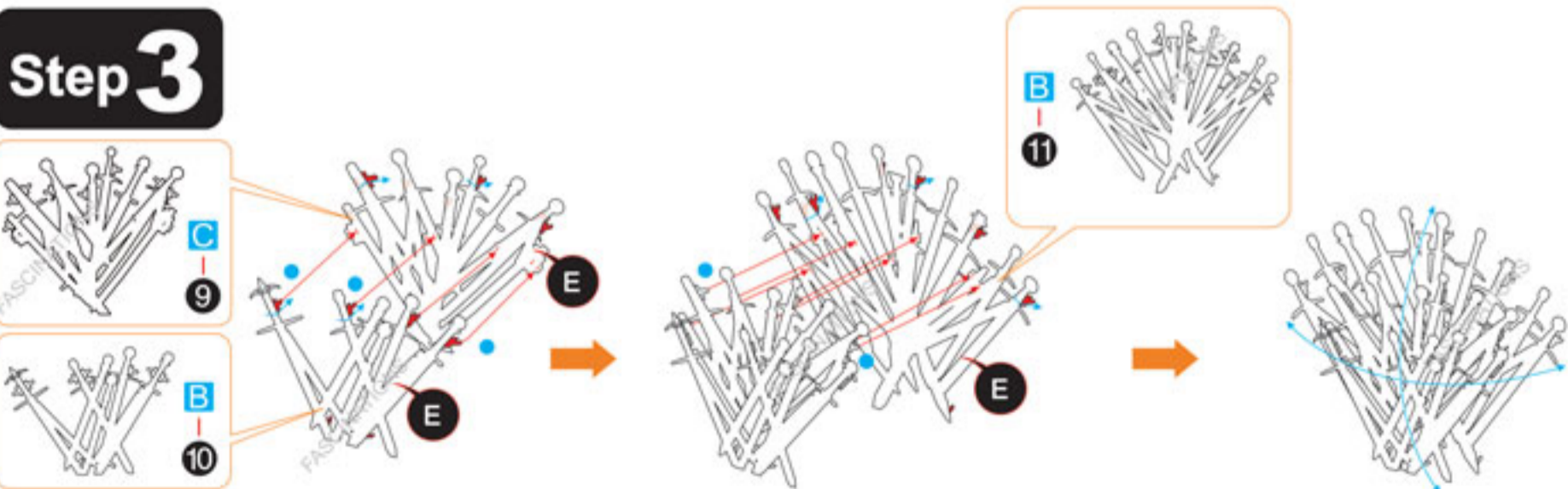


In order to avoid possible injury from sharp edges, please carefully discard the metal sheets after parts have been removed.

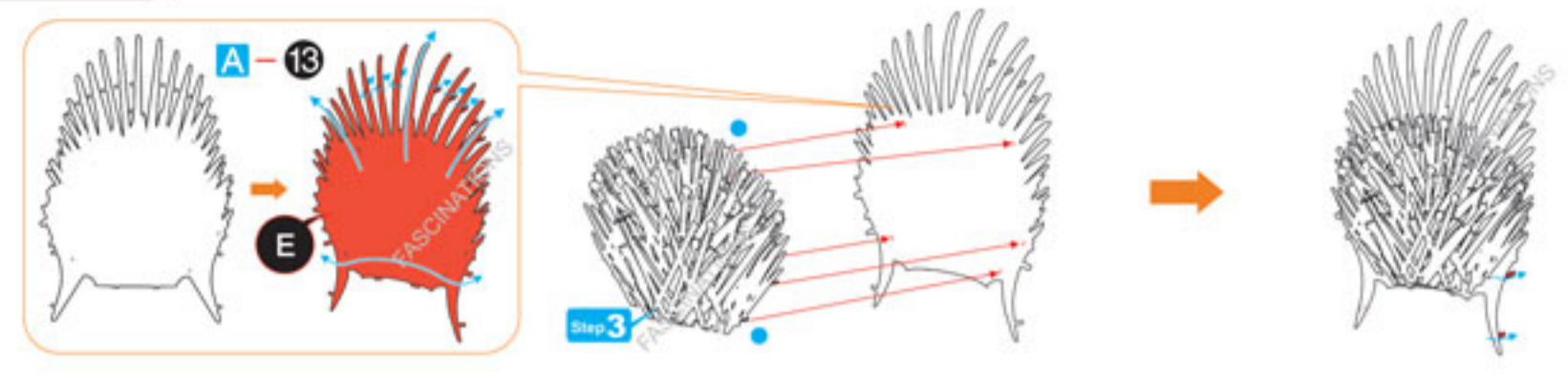
Step 2



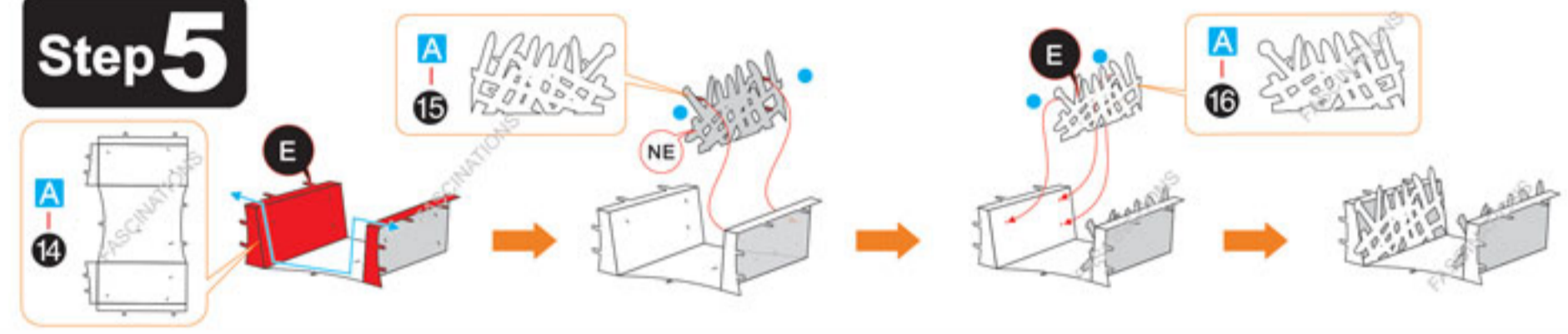
Step 3



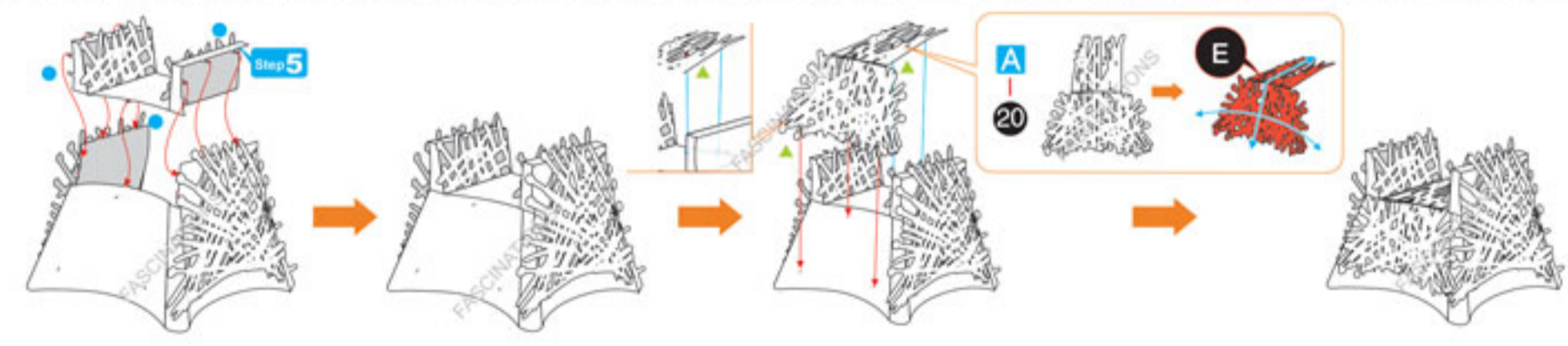
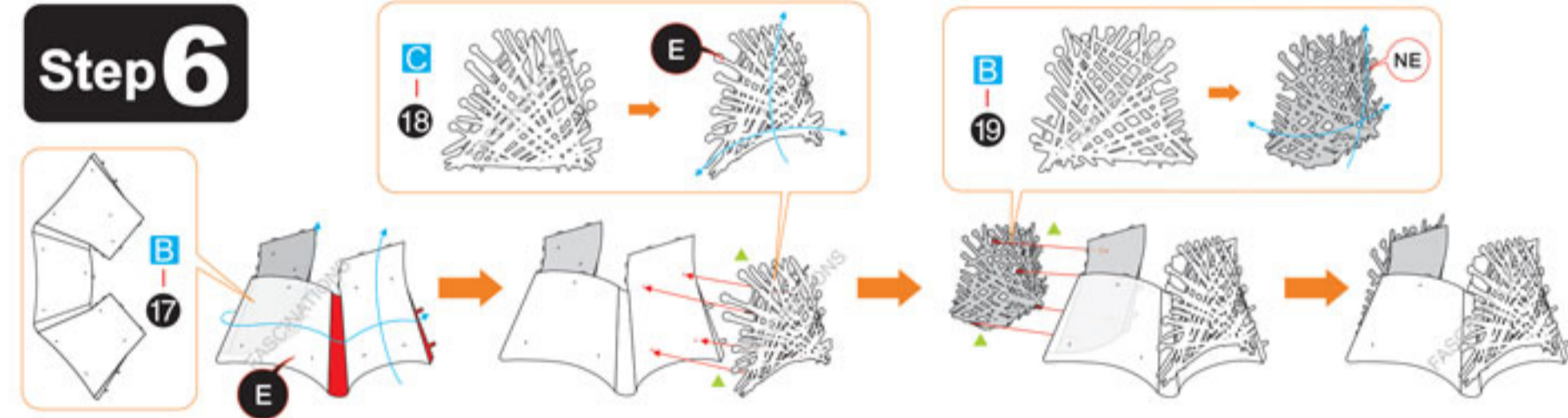
Step 4



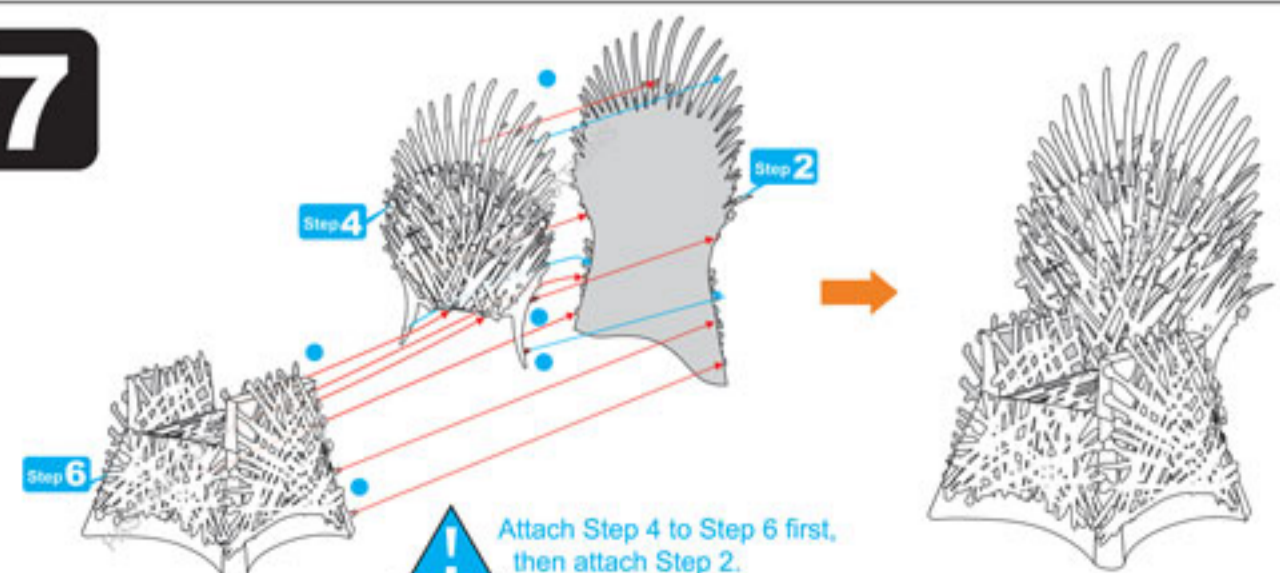
Step 5



Step 6



Step 7



Attach Step 4 to Step 6 first, then attach Step 2.