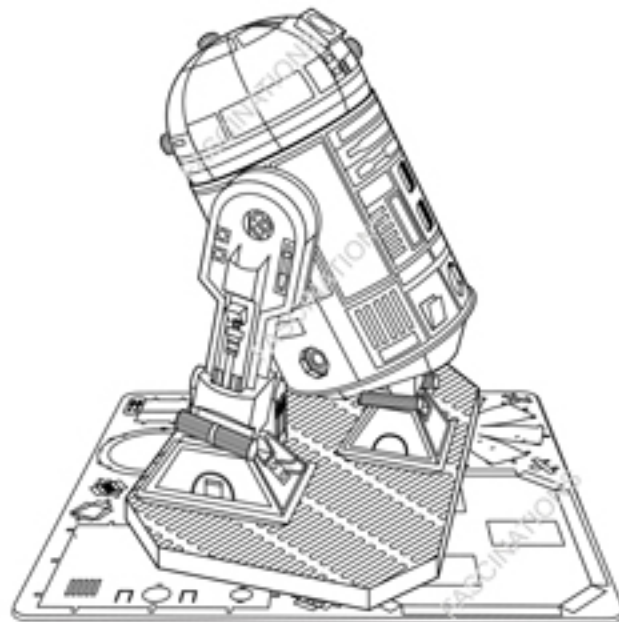




www.starwars.com
© &™ Lucasfilm Ltd.



R2-D2™
Item No. MMS250

Metal Earth.

3D METAL MODEL KITS

360° view



It is highly recommended that you visit www.metalearth.com/360/mms250 to see the completed model before assembling your own

Legends:

- E** Engraved side
- NE** Non-engraved side
- Attention point
- Insert tab and bend 90 degrees
- Insert tab and twist 90 degrees

Recommended tools:

- Wire cutters: helpful for taking parts from the metal sheets.
- Tweezers or needle nose pliers: helpful for folding parts, bending and twisting tabs.

Assembly tip:
If needed, slightly twist tabs to hold parts together then untwist and bend them down for a nice finish

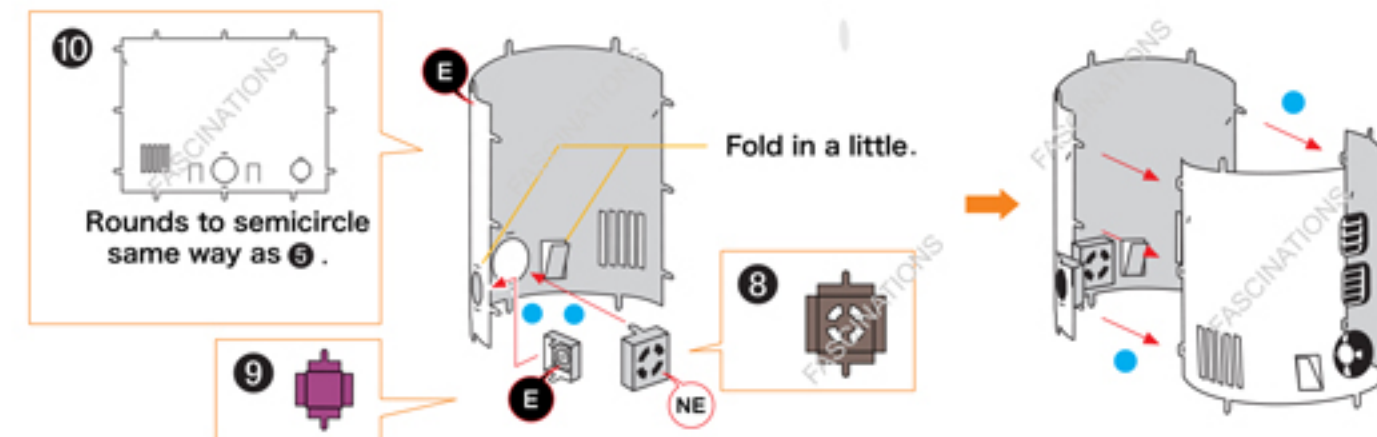
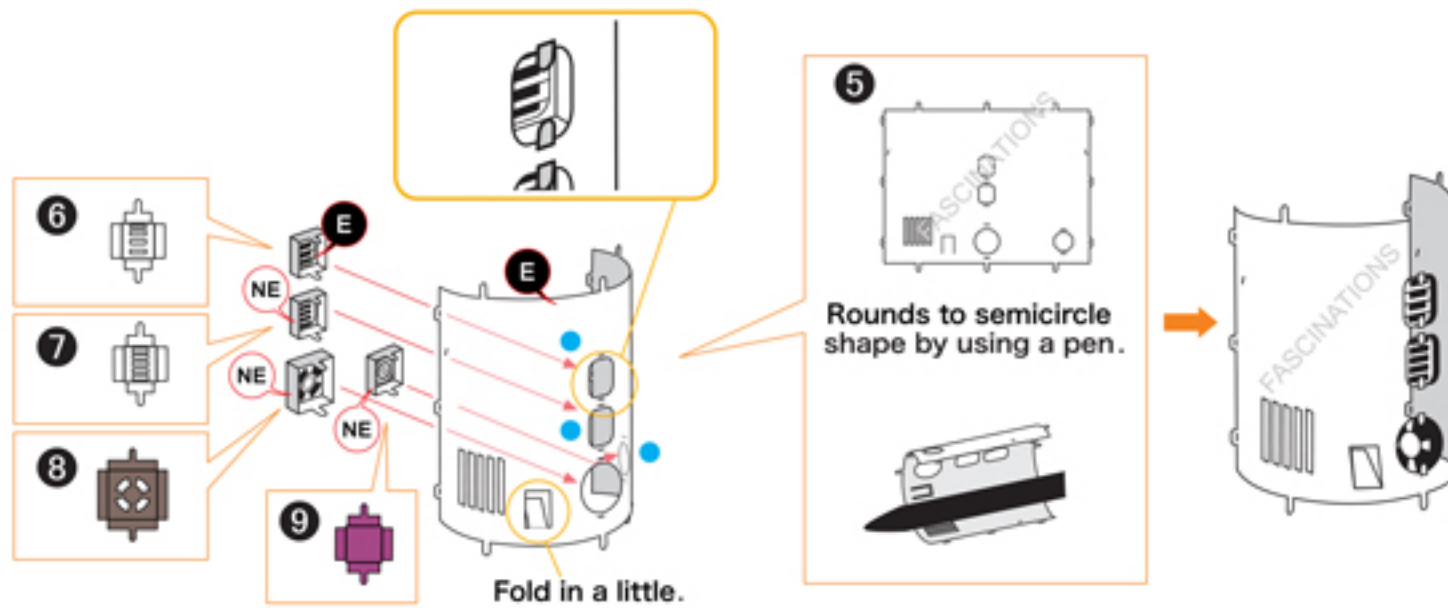
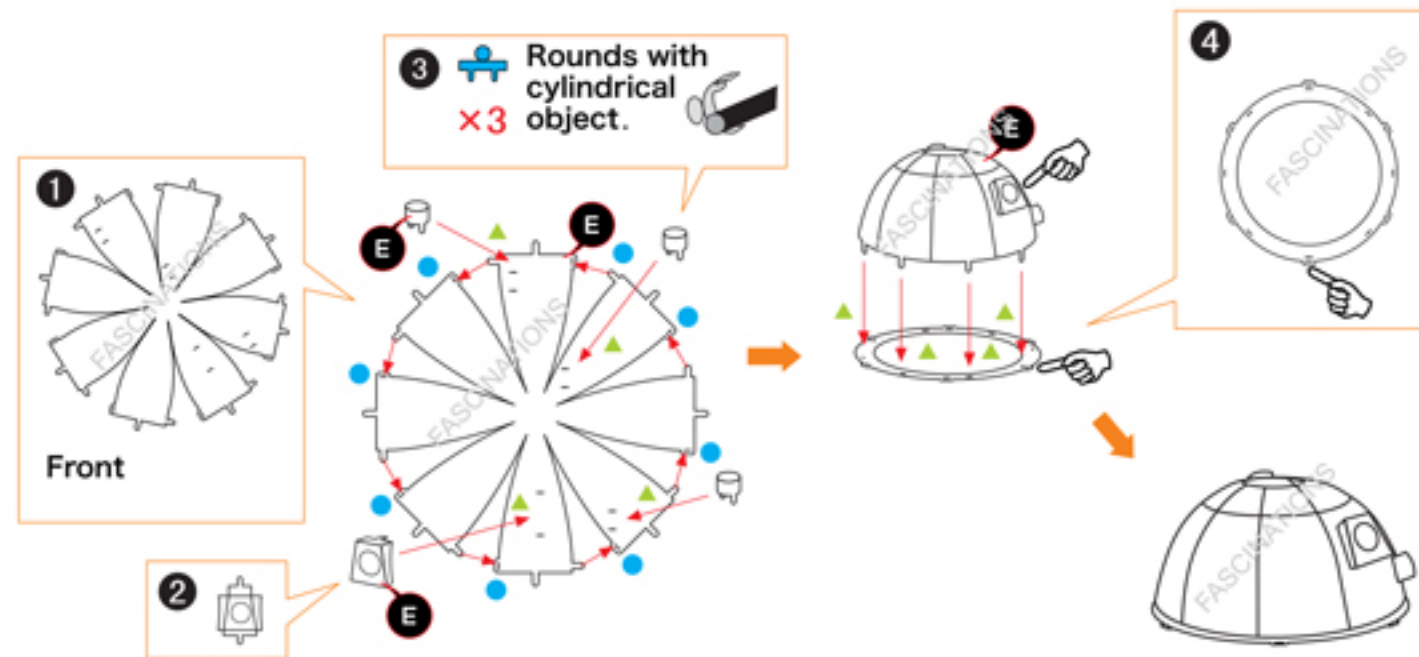
Insertion tabs are inserted and then folded
Fold lines can be seen as shown here
Insertion holes

Notes:

In order to avoid possible injury from sharp edges, please carefully discard the metal sheet after parts have been removed.

This product is not a toy. Keep out of reach of children.

Assembly Flow Chart



Metal sheets

