



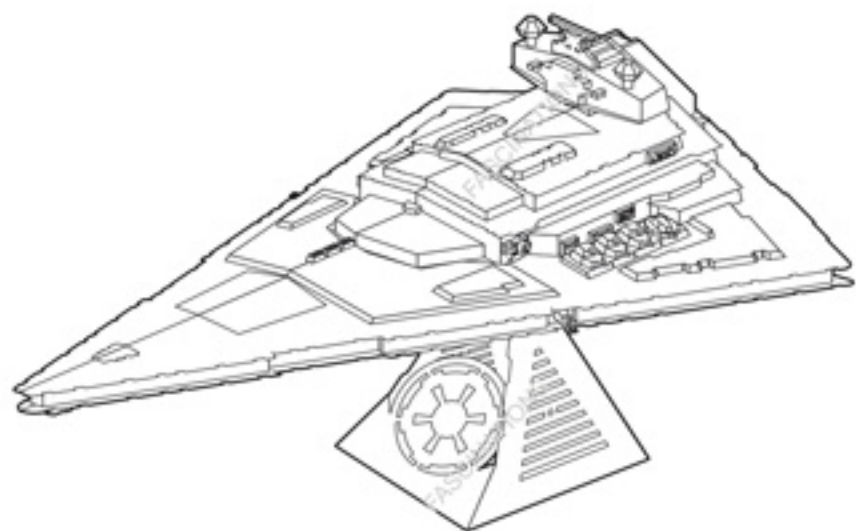
www.starwars.com
© &™ Lucasfilm Ltd.



It is highly recommended that you visit www.metalearth.com/360/icx130 to see the completed model before assembling your own

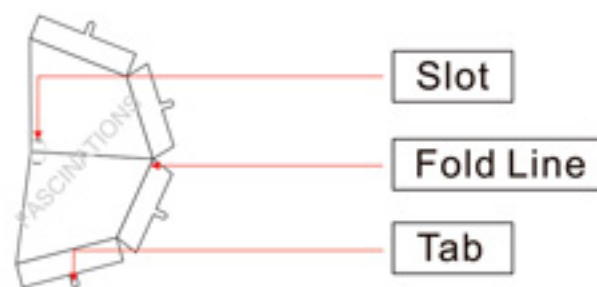
Metal Earth
ICONX

ICX130



IMPERIAL STAR DESTROYER

TO CREATE THE BEST CONNECTIONS



Legends:

- E** Engraved side
- NE** Non-engraved side
- Attention point
- Insert tab and bend 90 degrees
- Insert tab and twist 90 degrees

Assembly tip:

If needed, slightly twist tabs to hold parts together then untwist and bend them down for a nice finish

Recommended tools:

-Wire cutters: helpful for taking parts from the metal sheets.

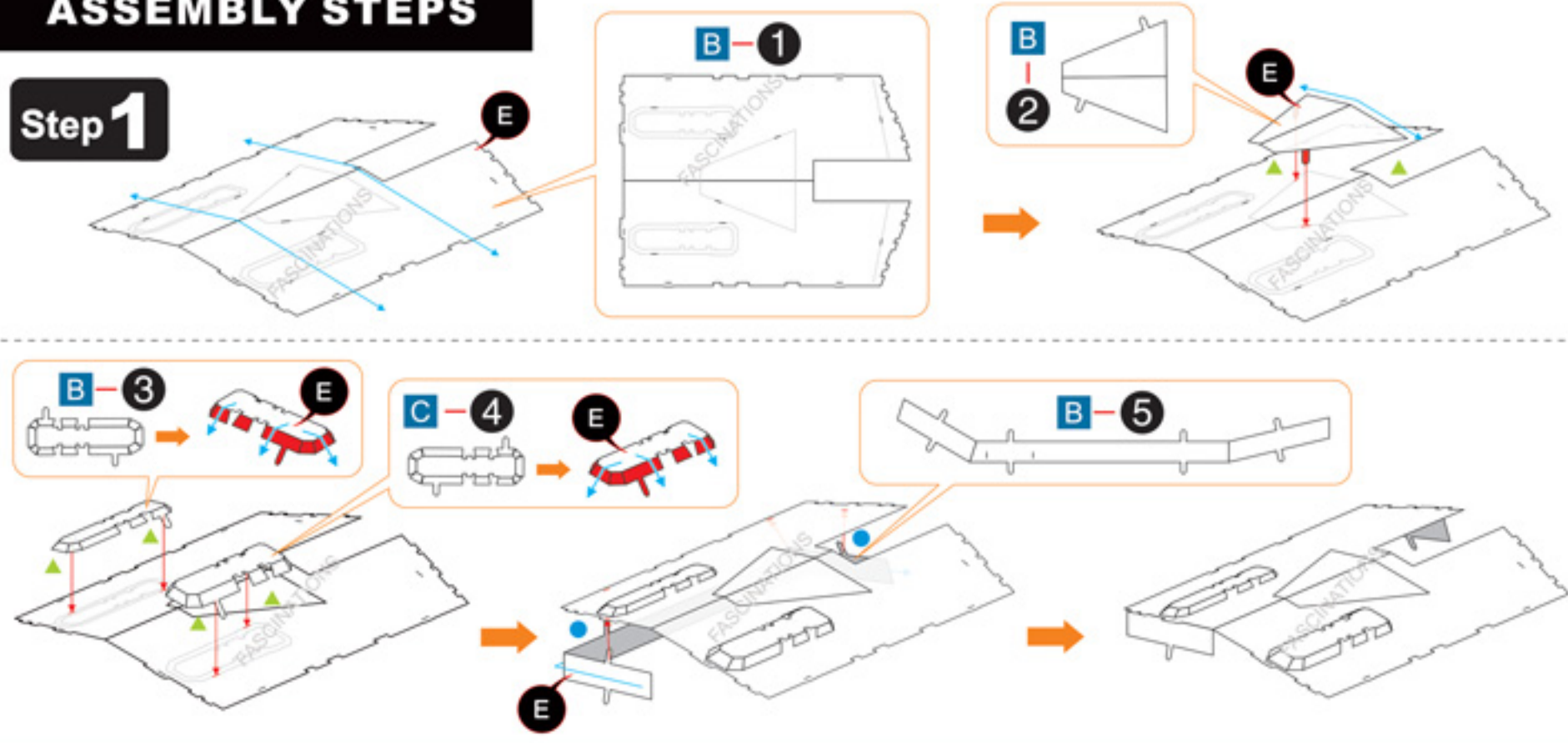


-Tweezers or needle nose pliers: helpful for folding parts, bending and twisting tabs.



ASSEMBLY STEPS

Step 1



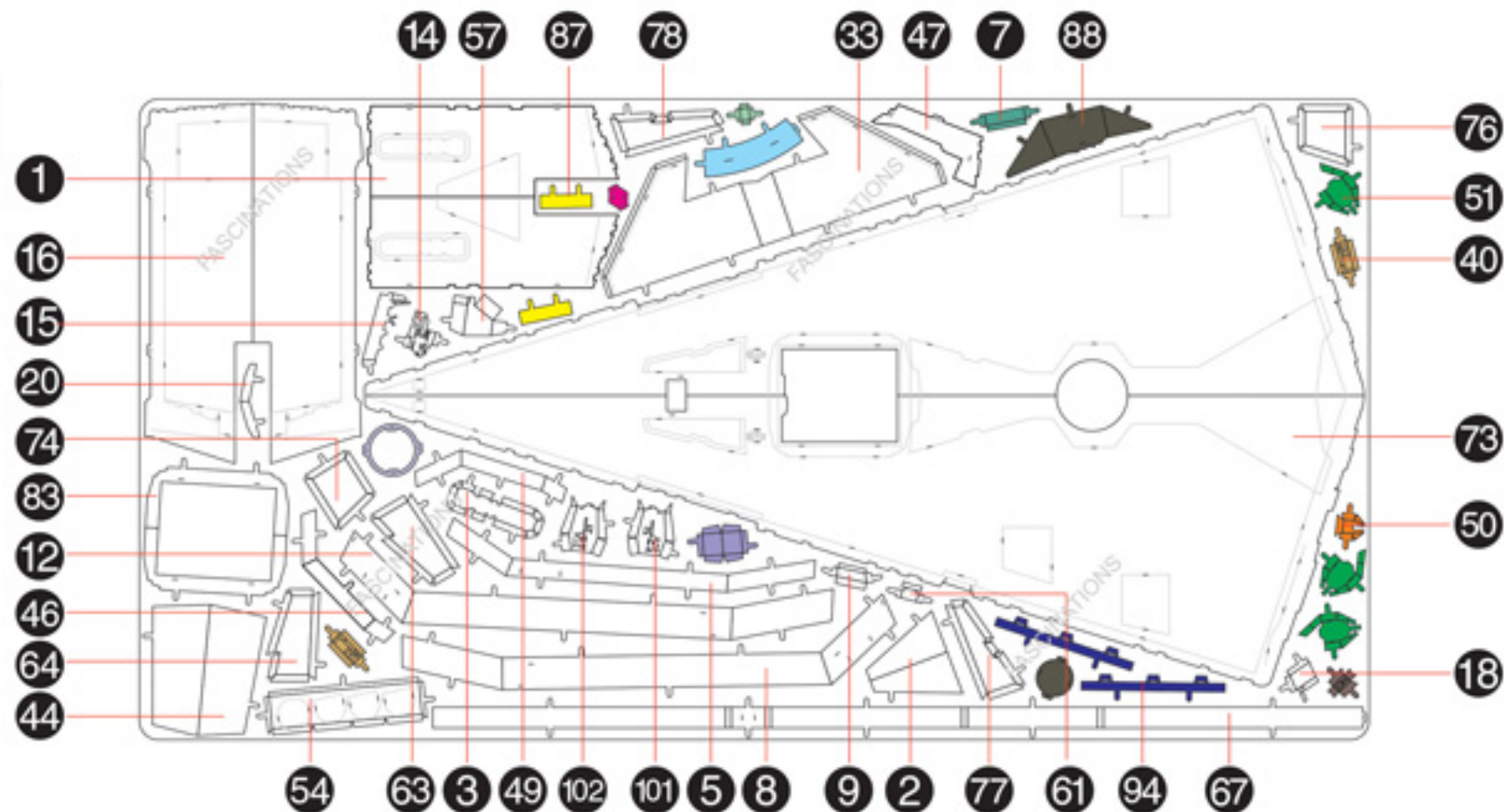
In order to avoid possible injury from sharp edges, please carefully discard the metal sheets after parts have been removed.

METAL SHEETS

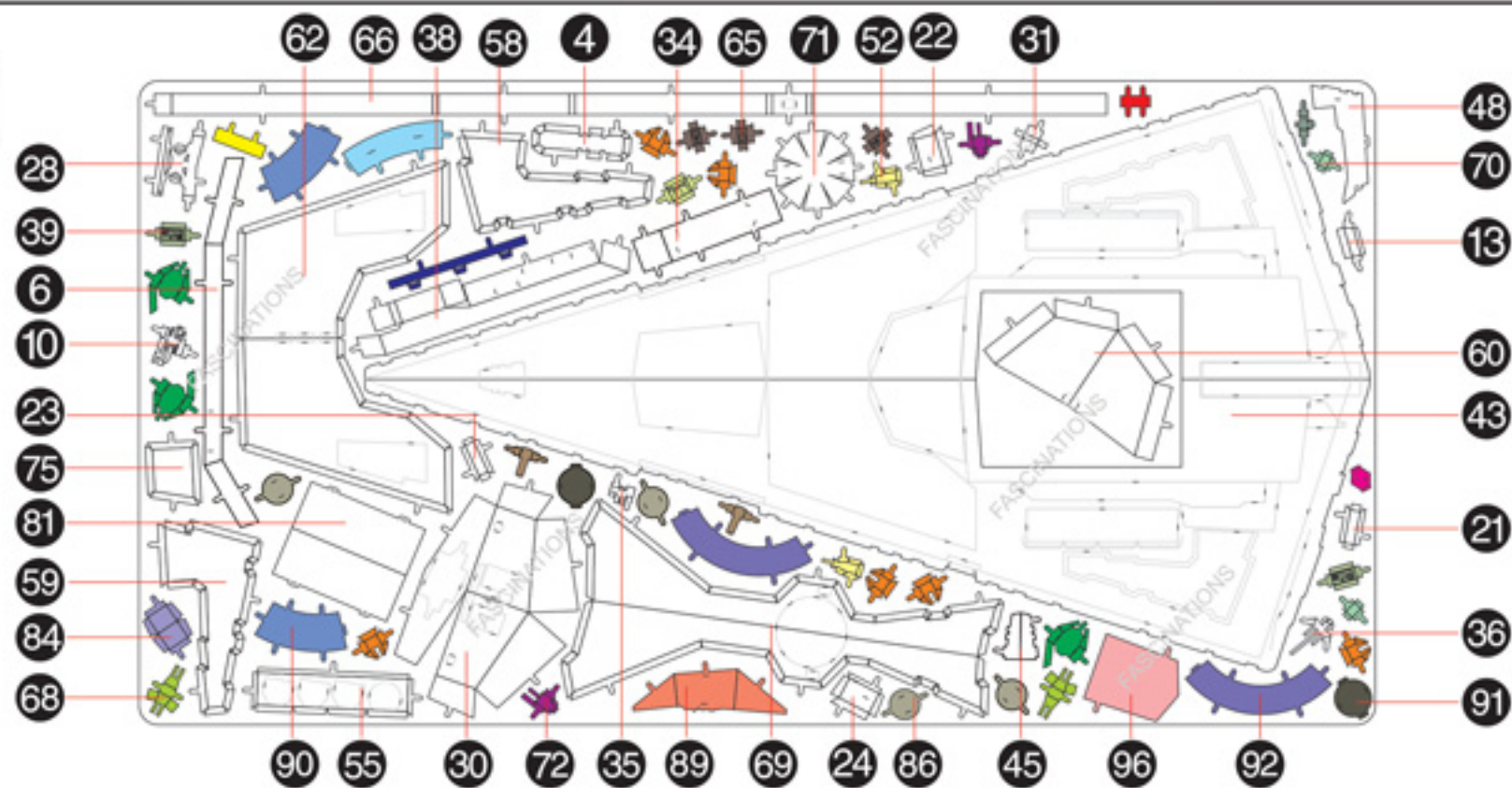
A

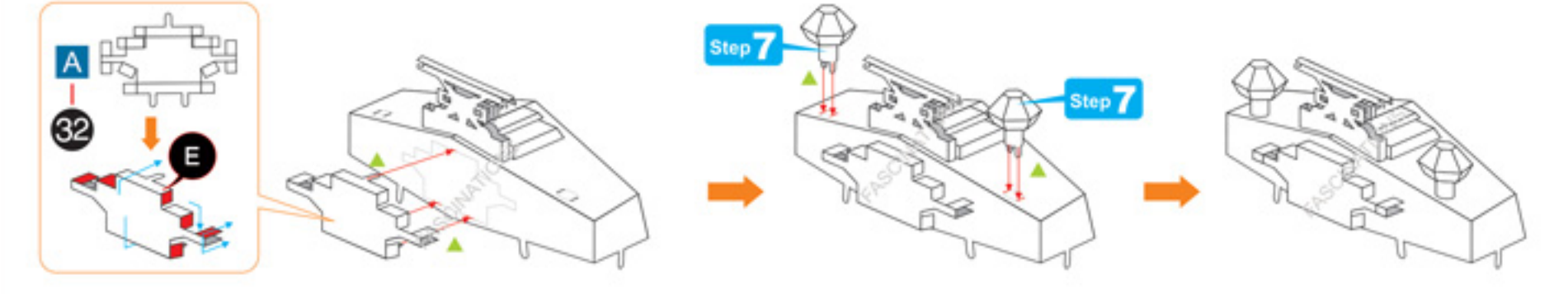
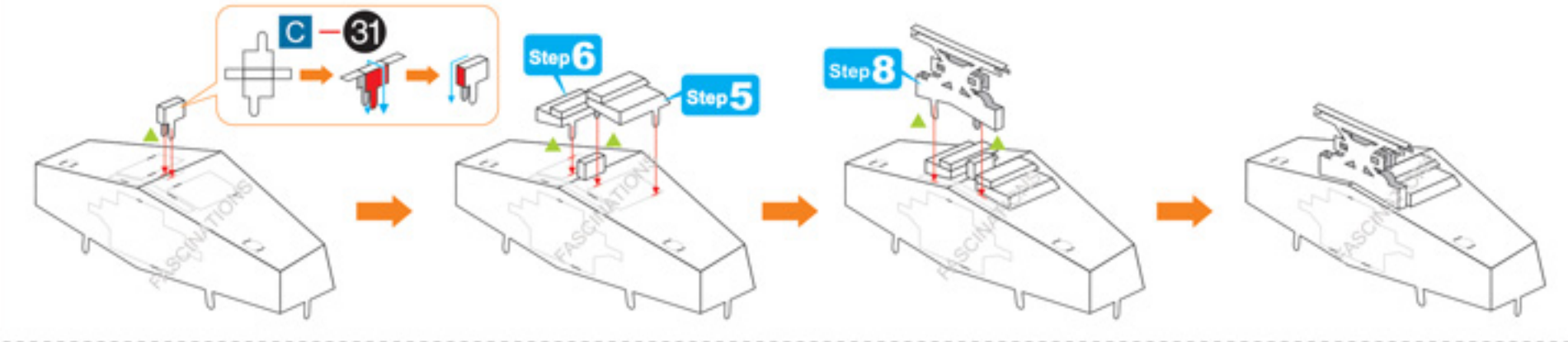
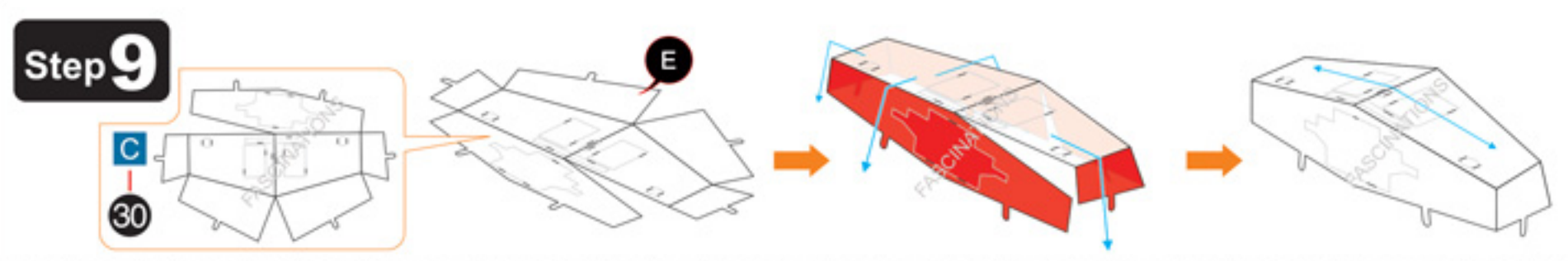
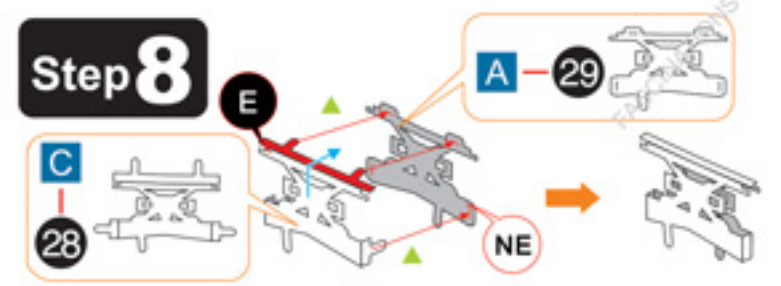
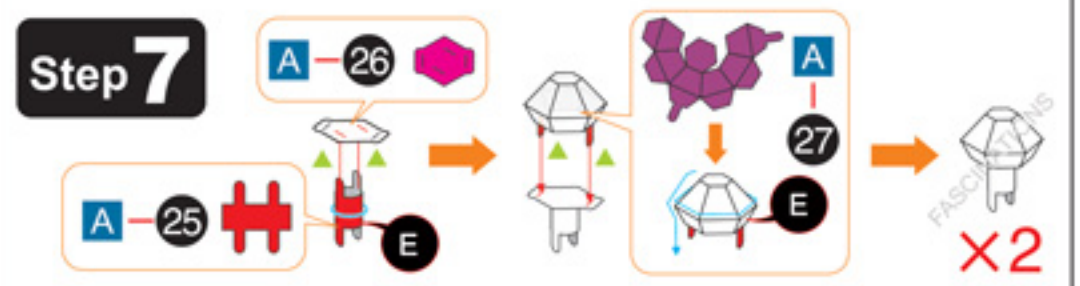
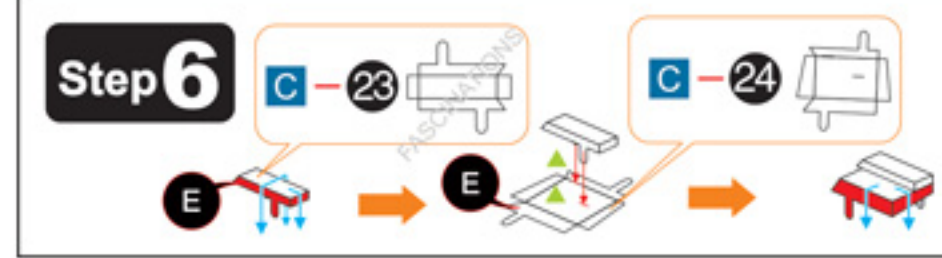
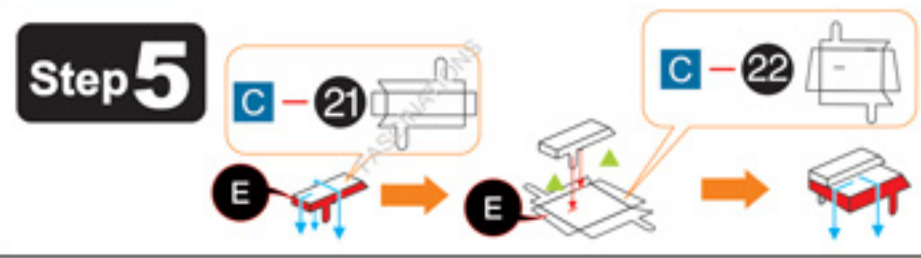
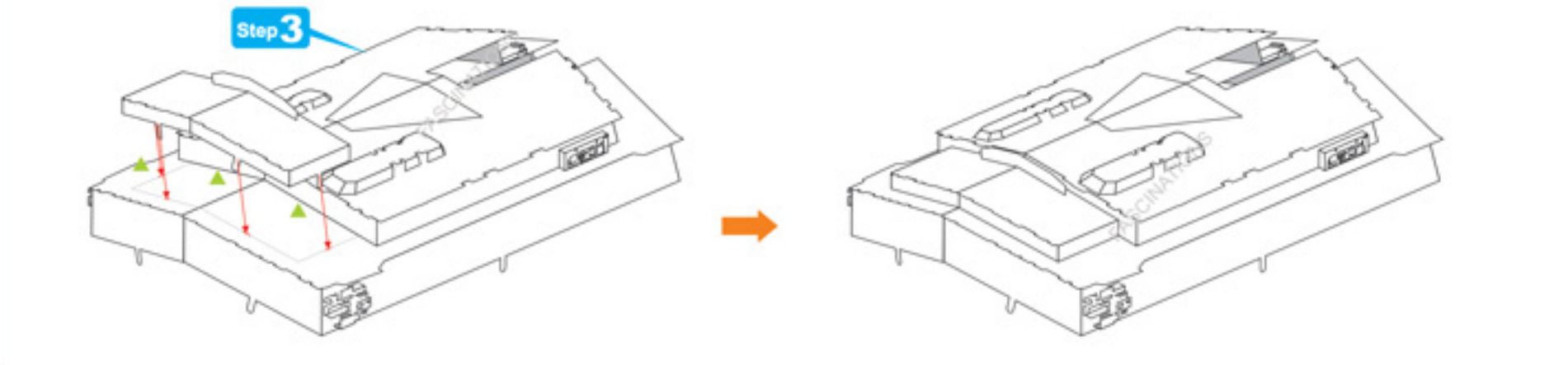
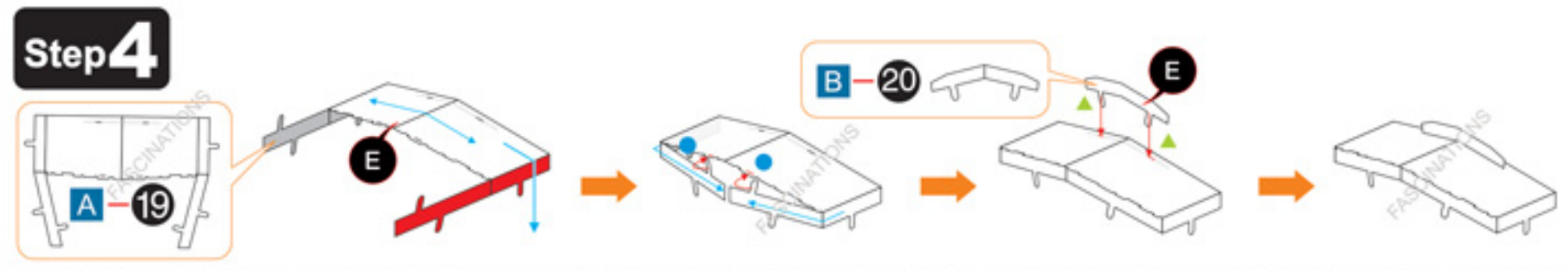
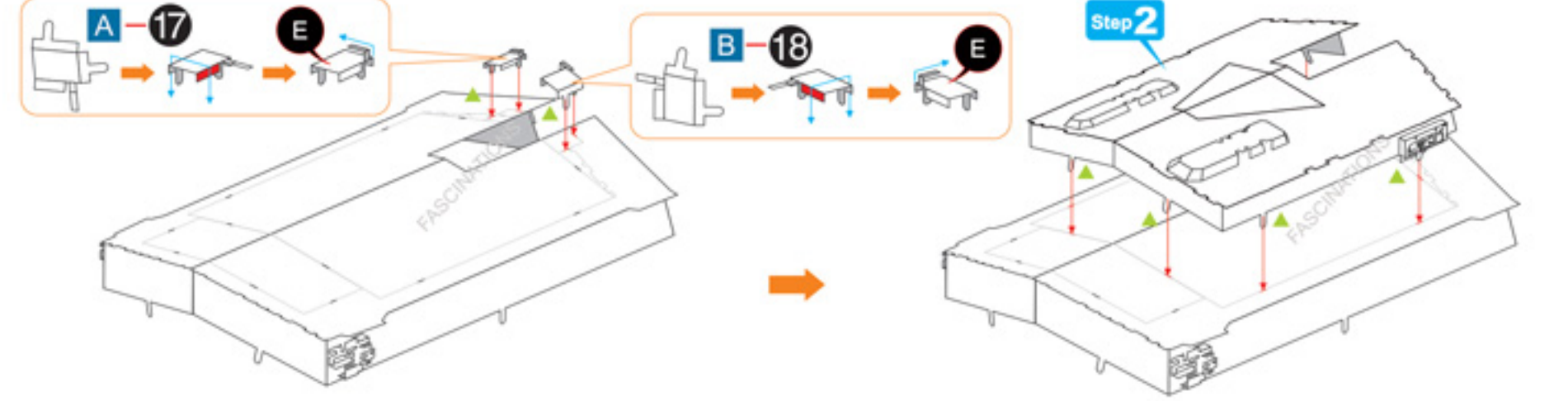
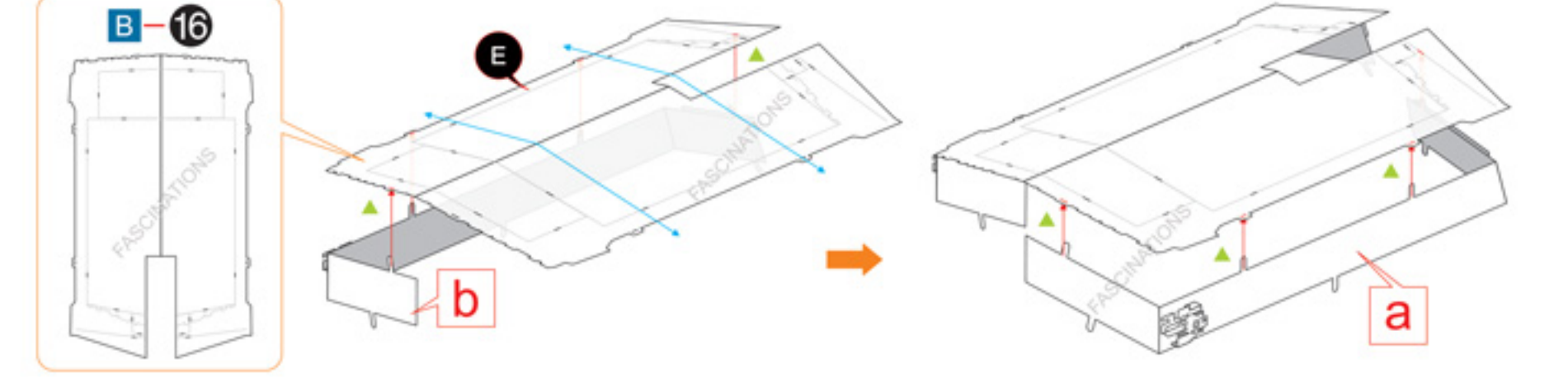
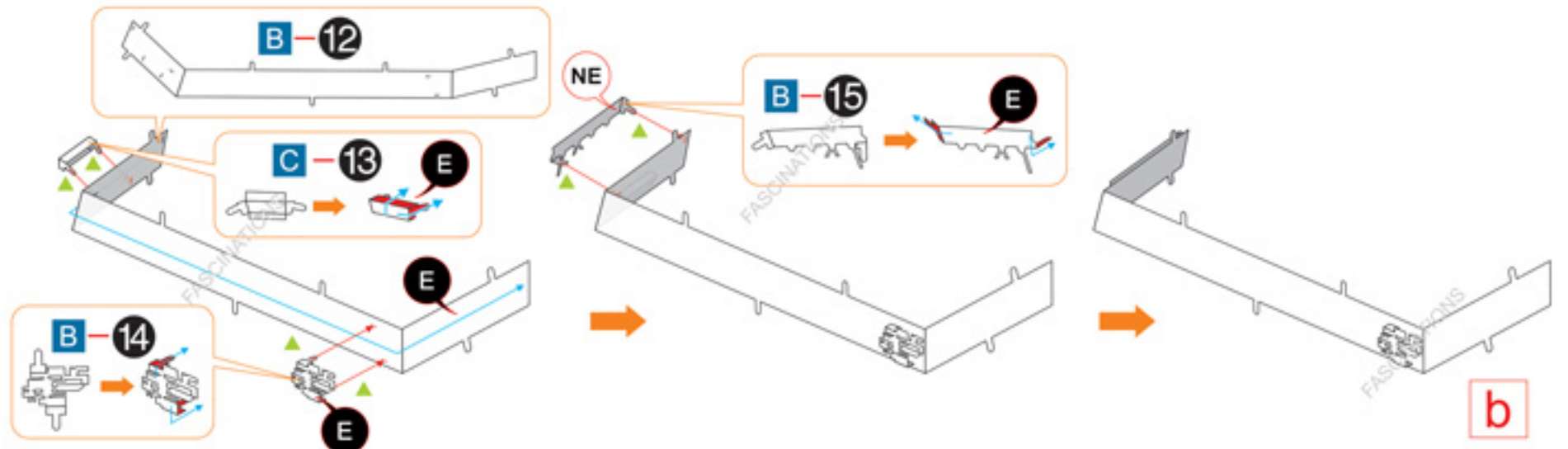
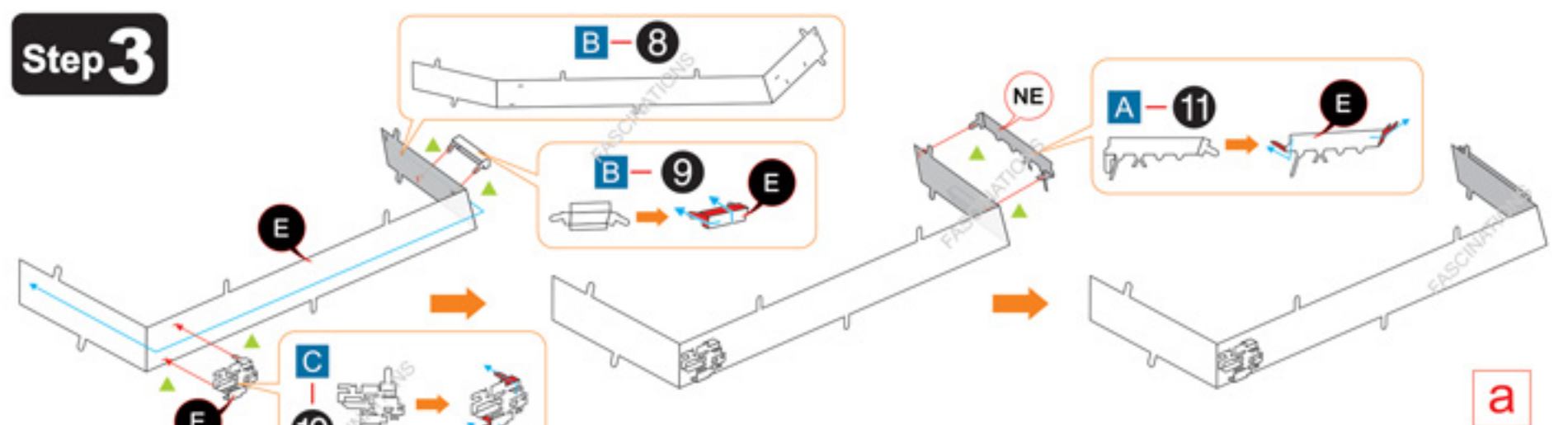
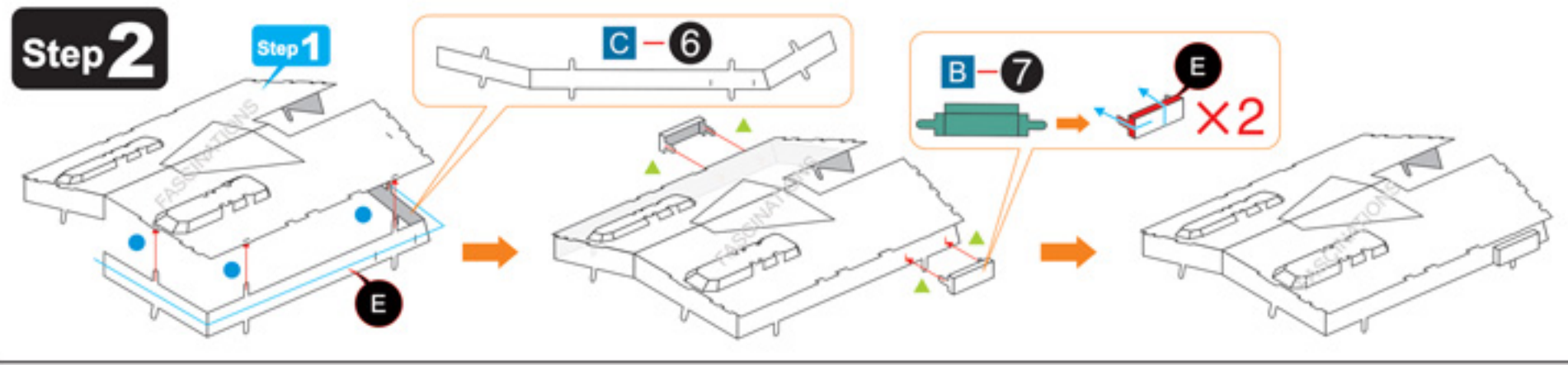


B

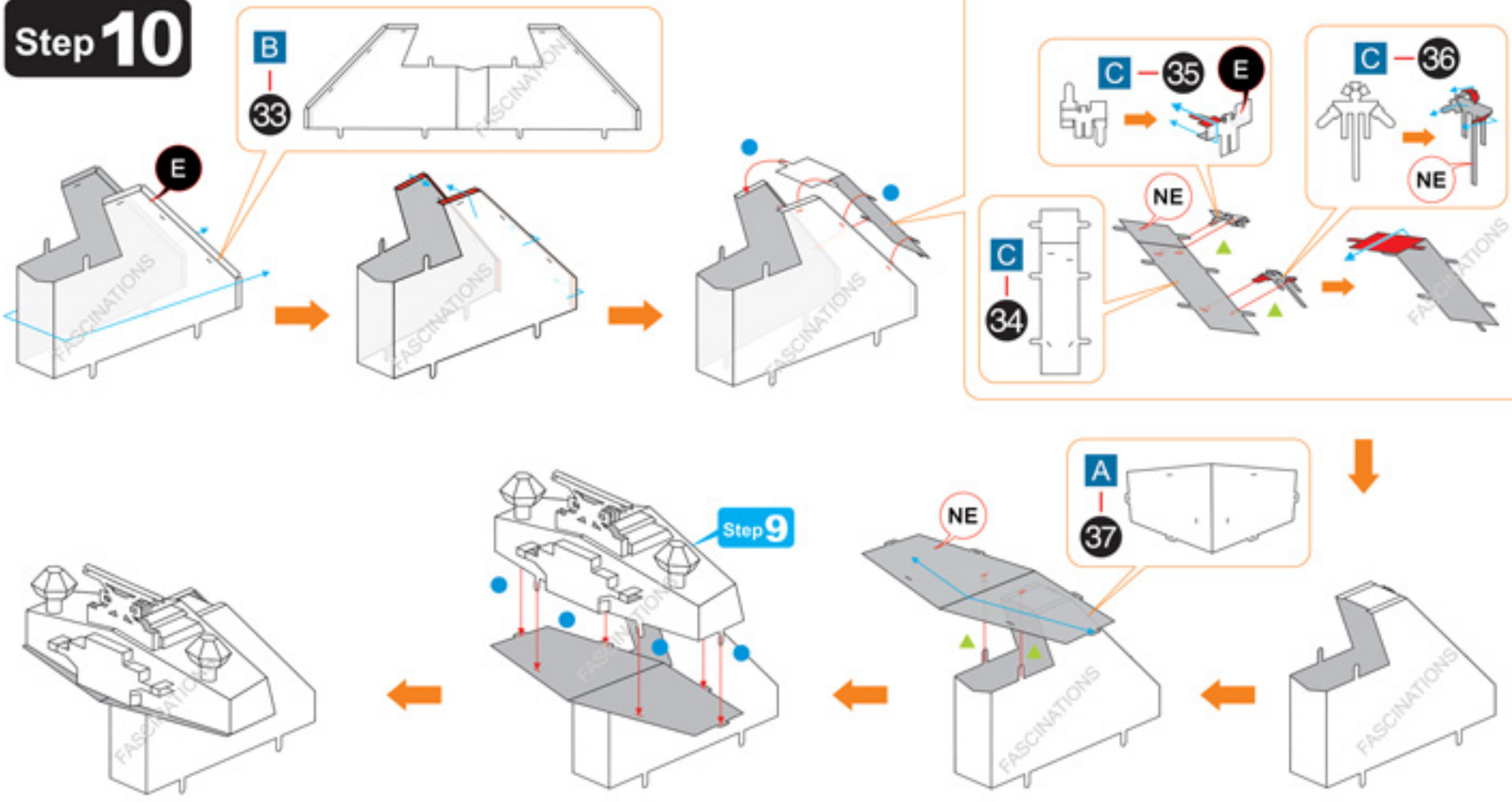


C



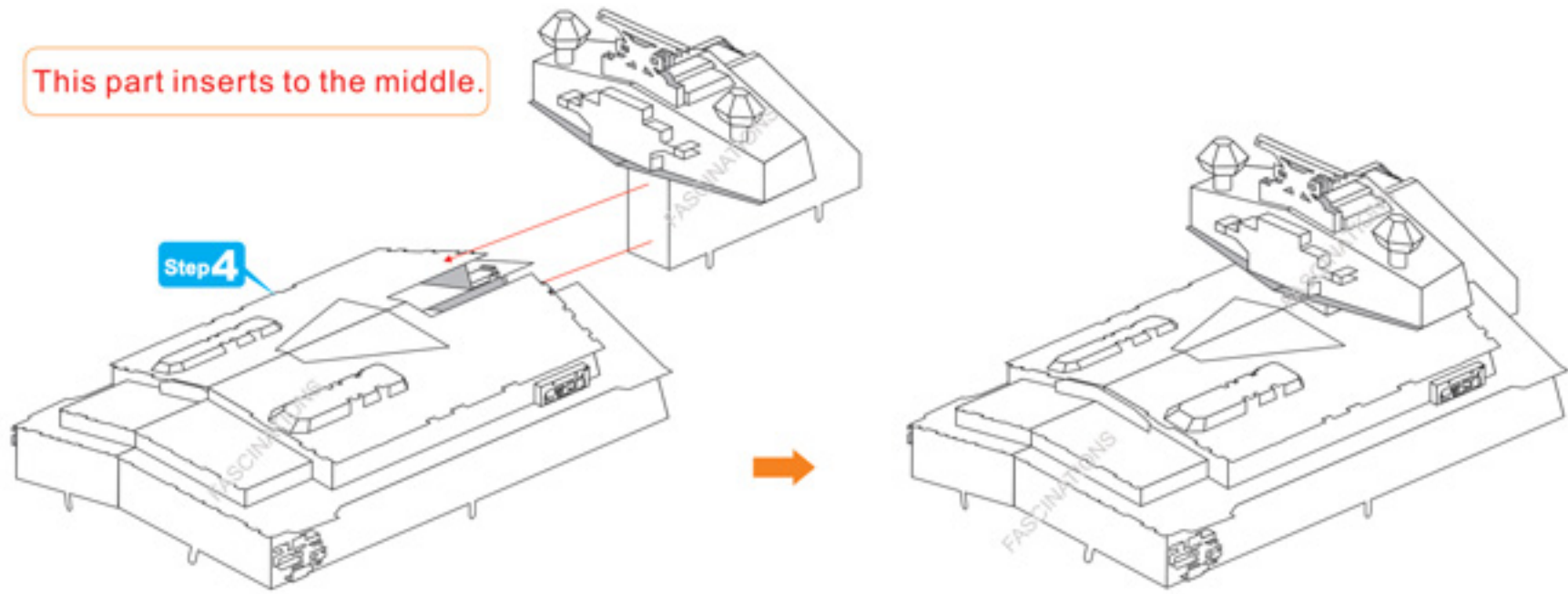


Step 10

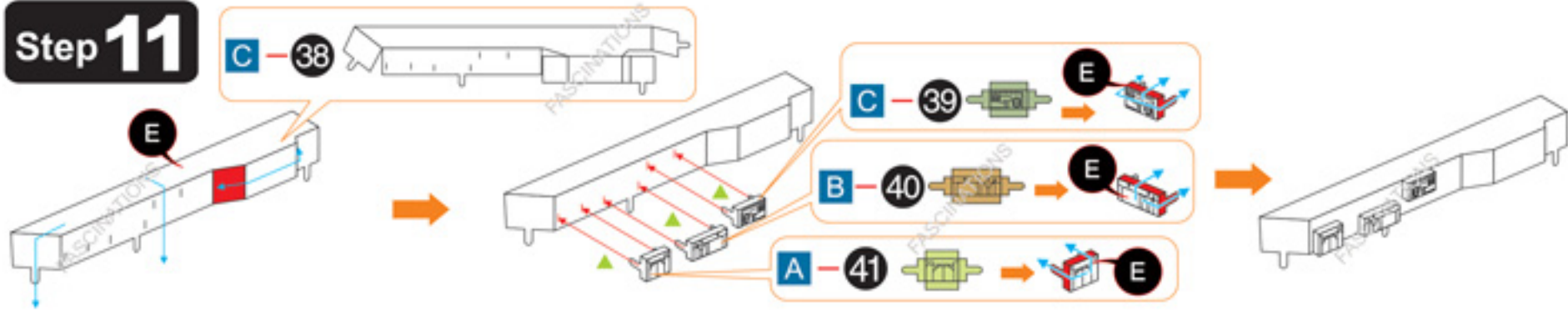


This part inserts to the middle.

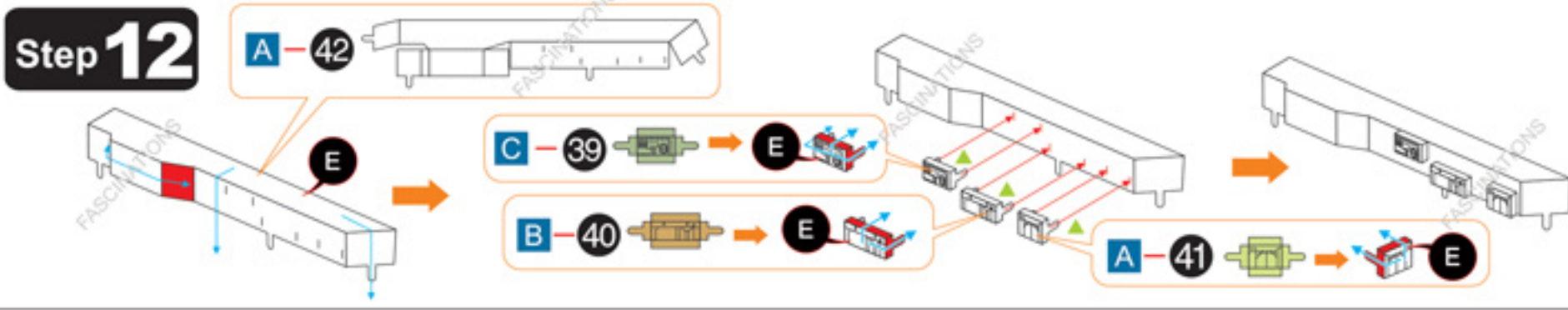
Step 4



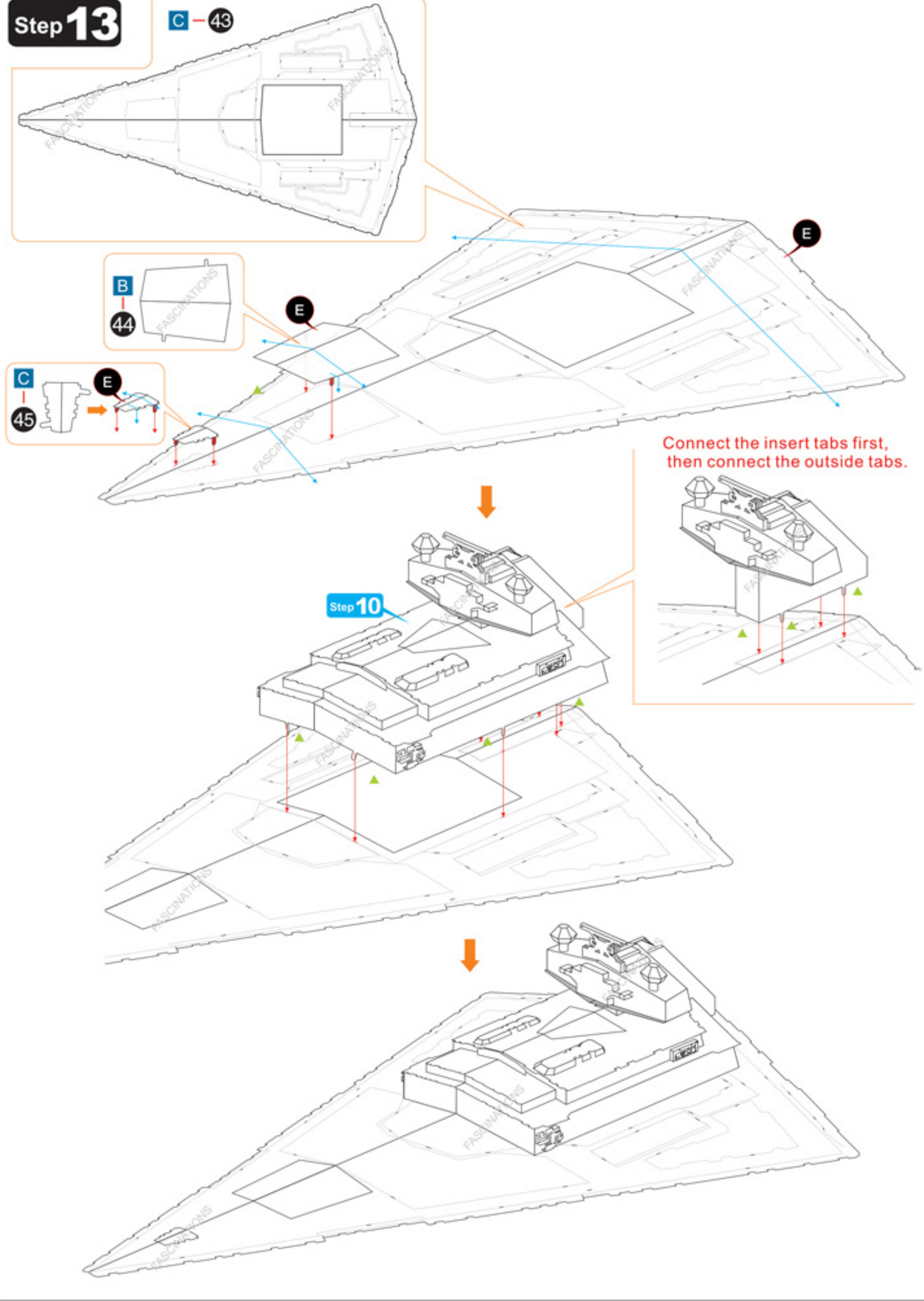
Step 11

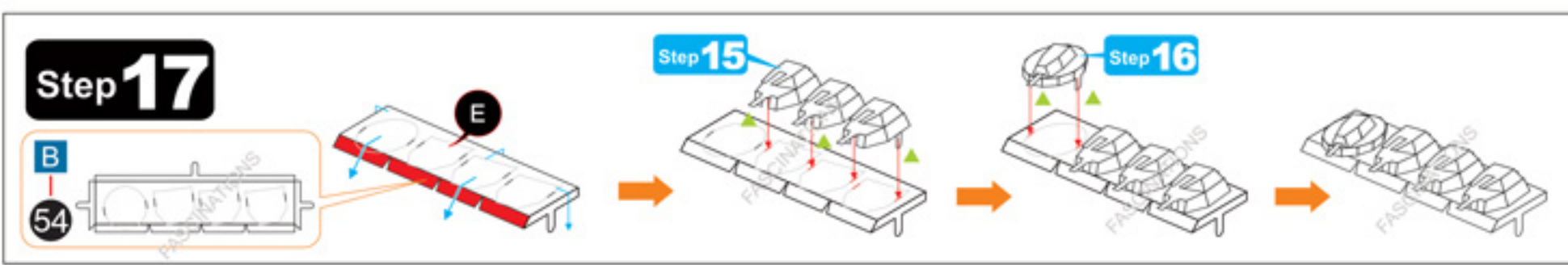
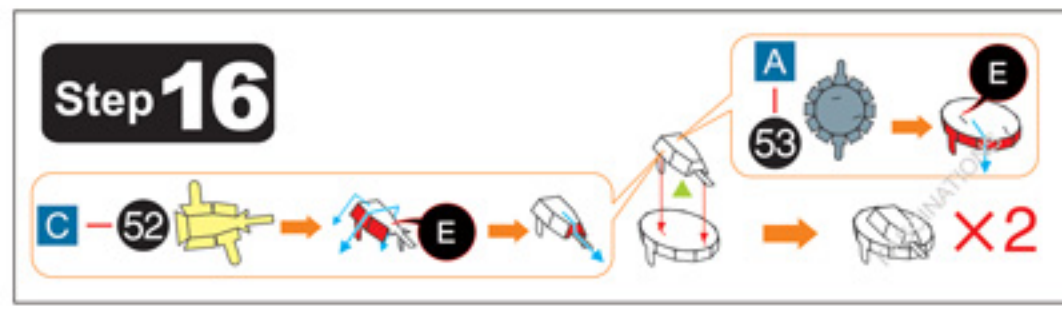
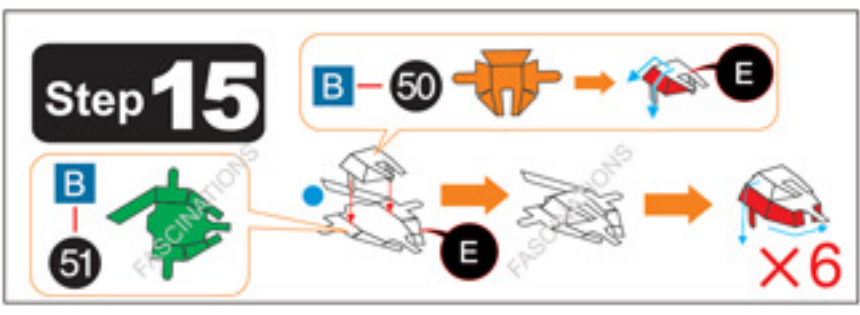
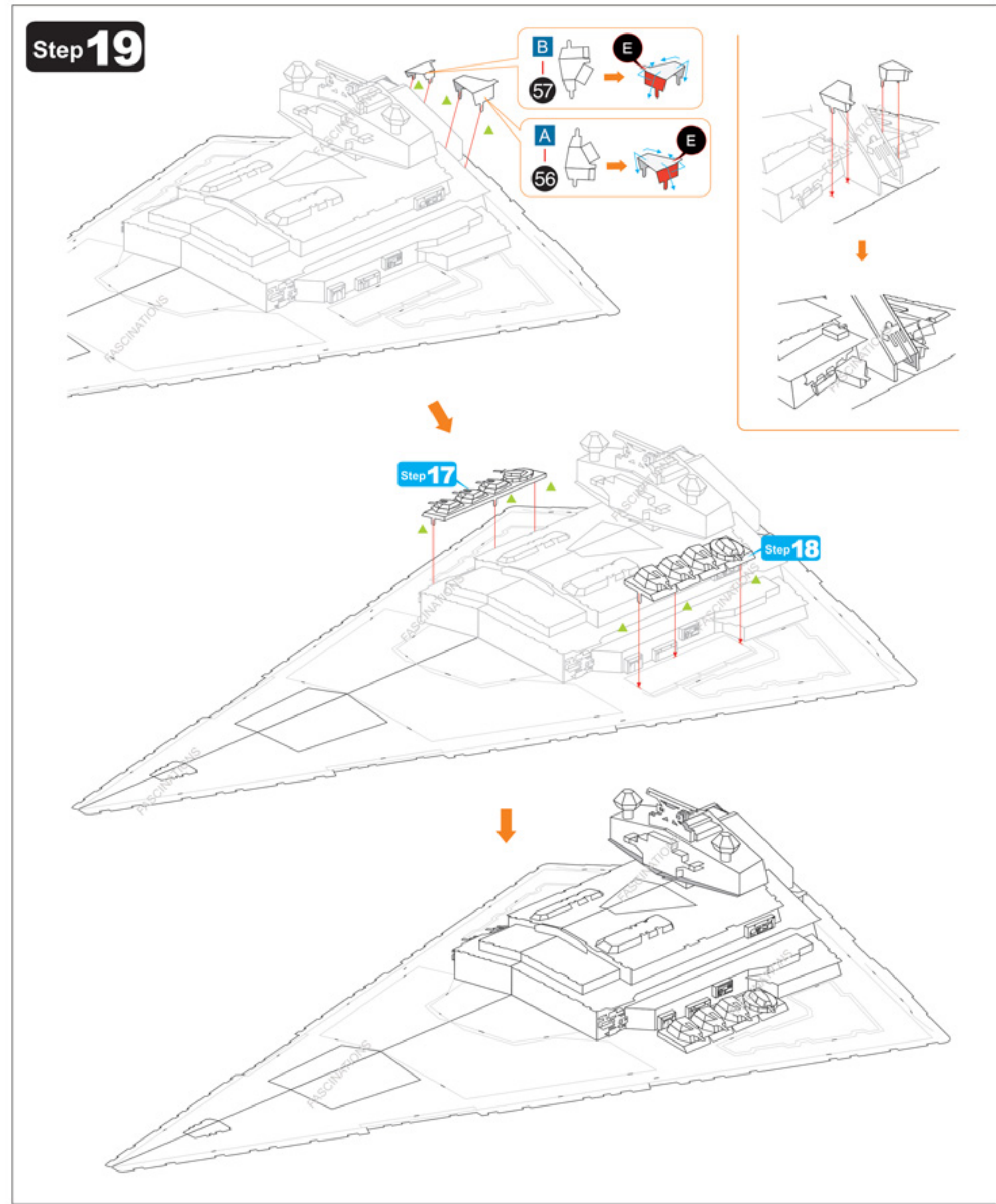
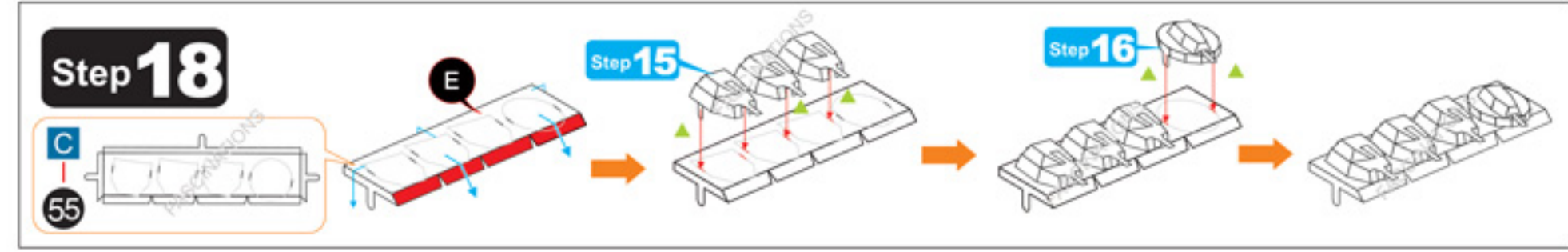
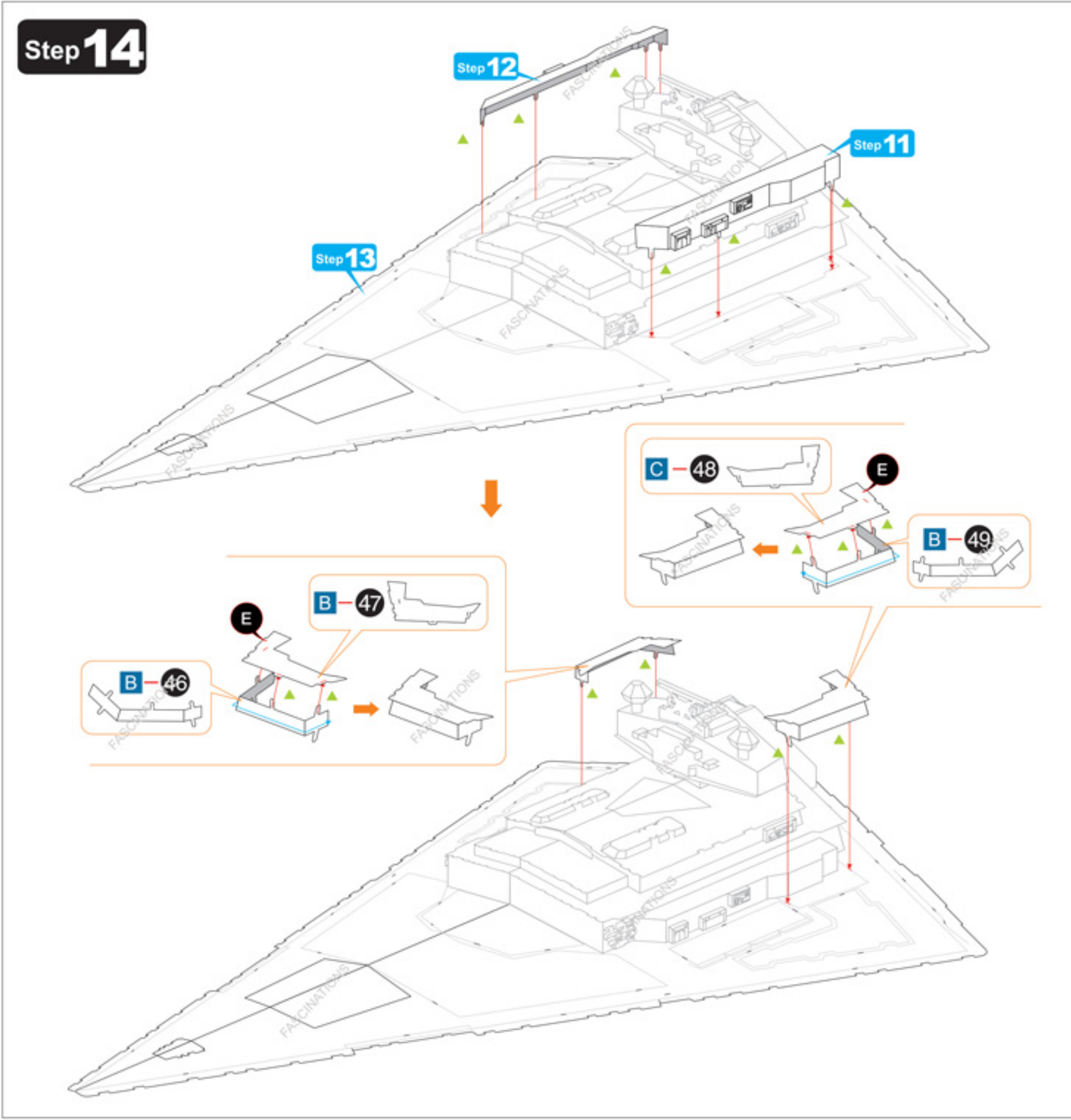


Step 12

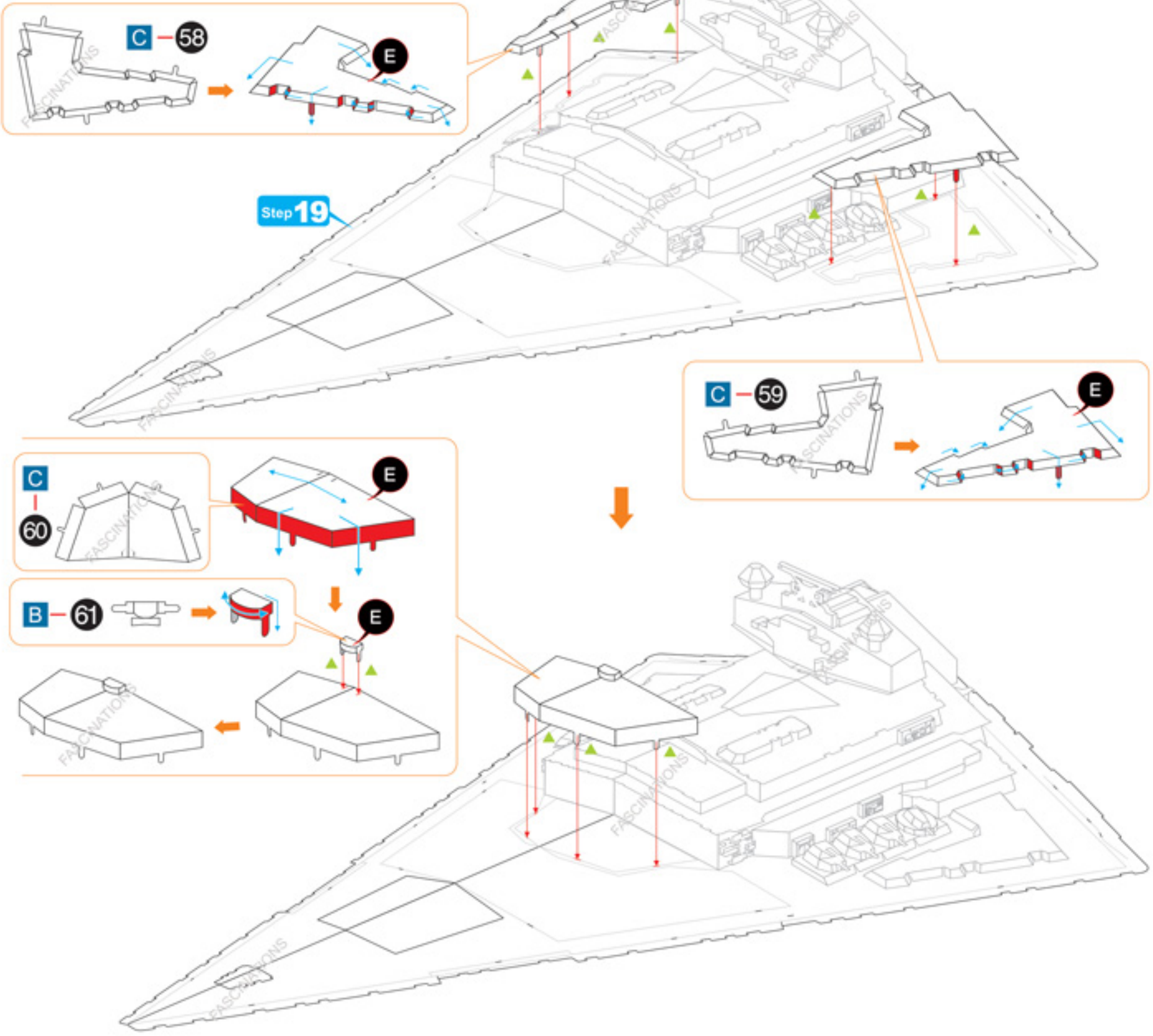


Step 13

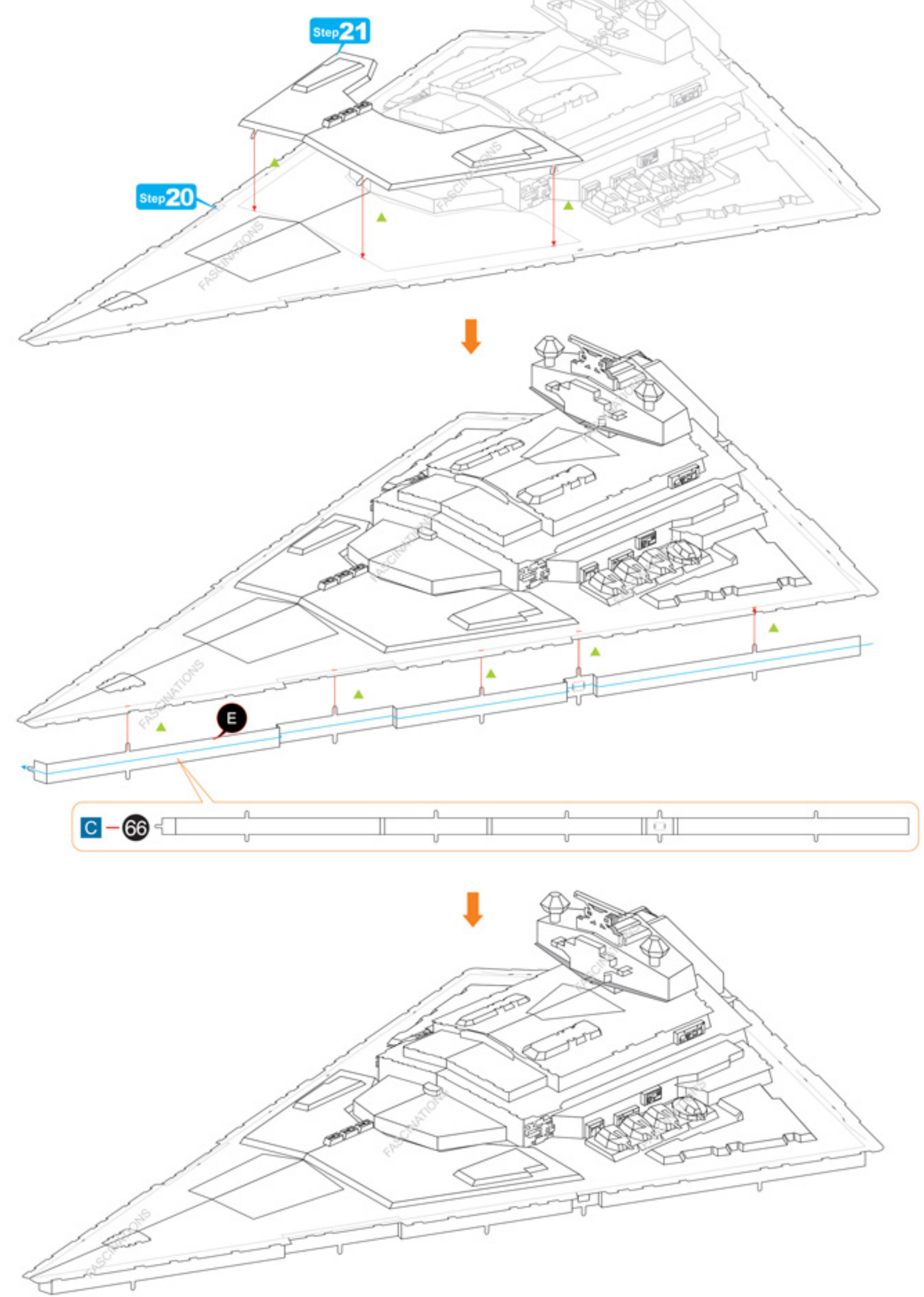




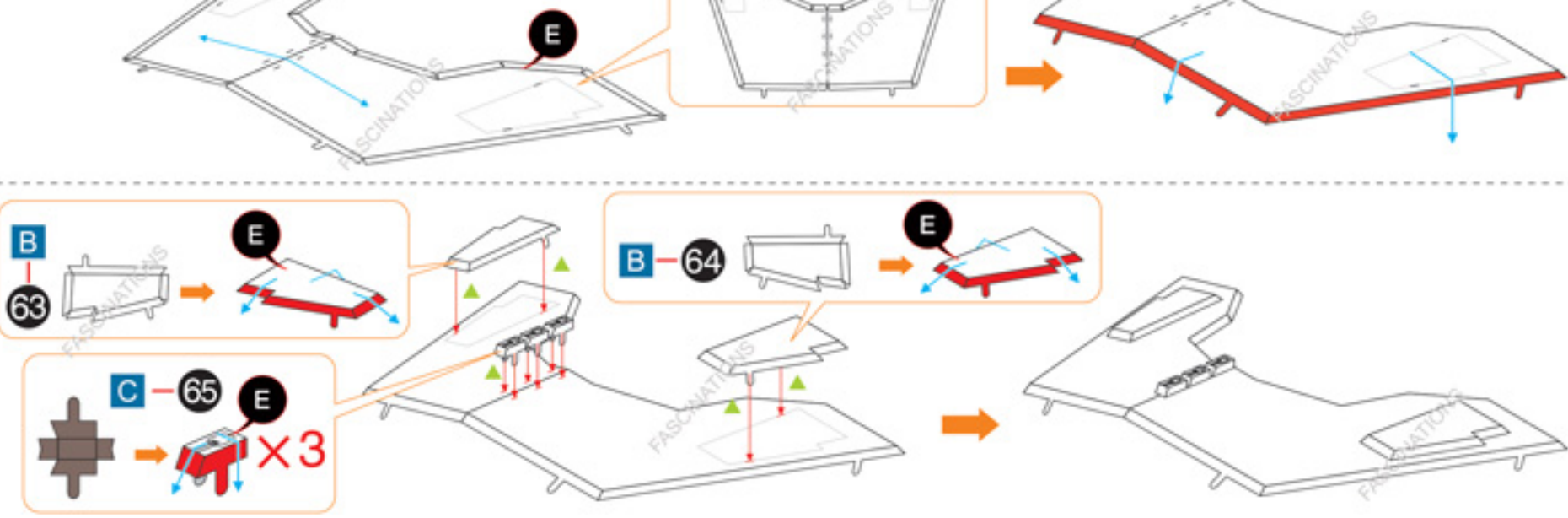
Step 20



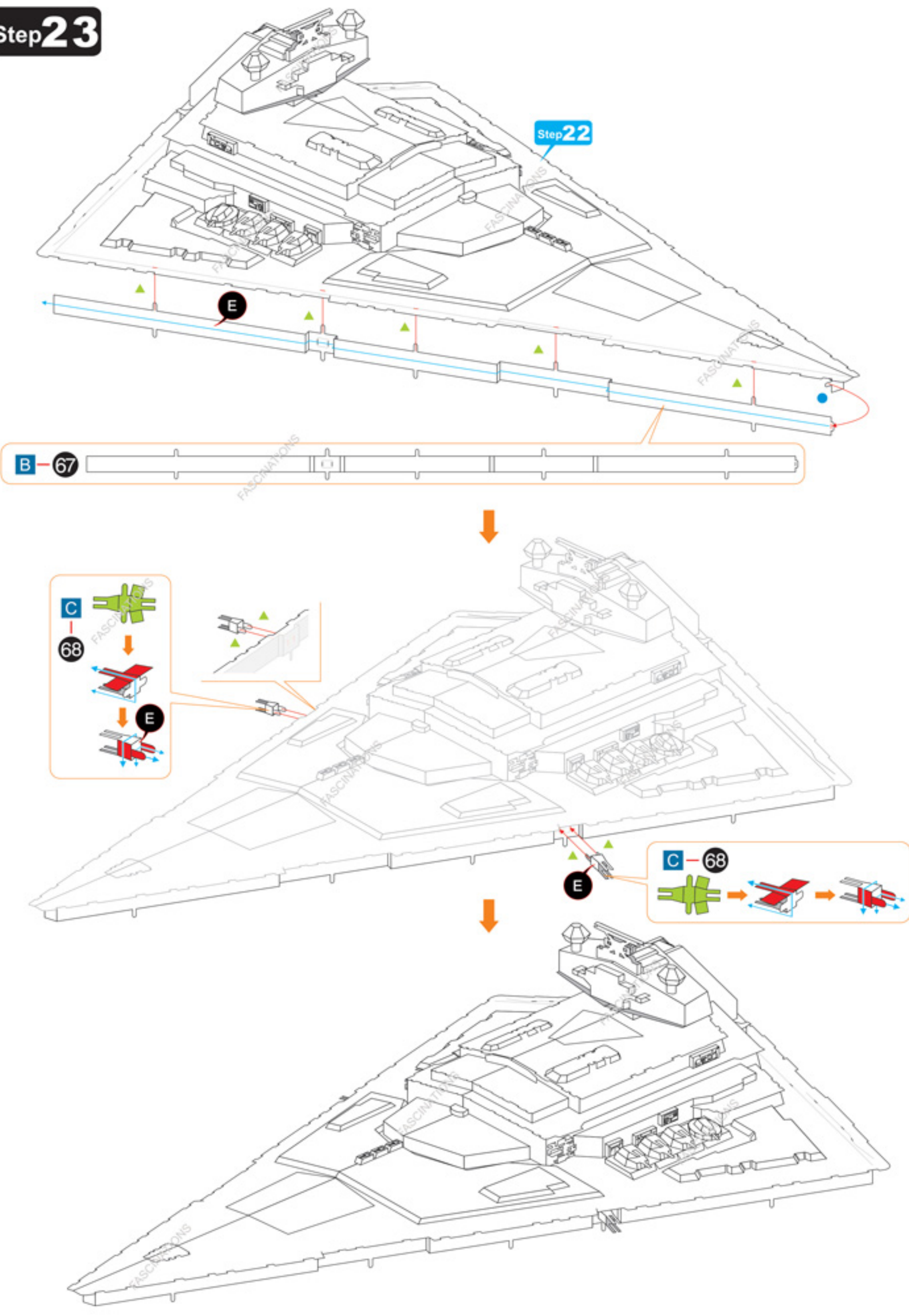
Step 22



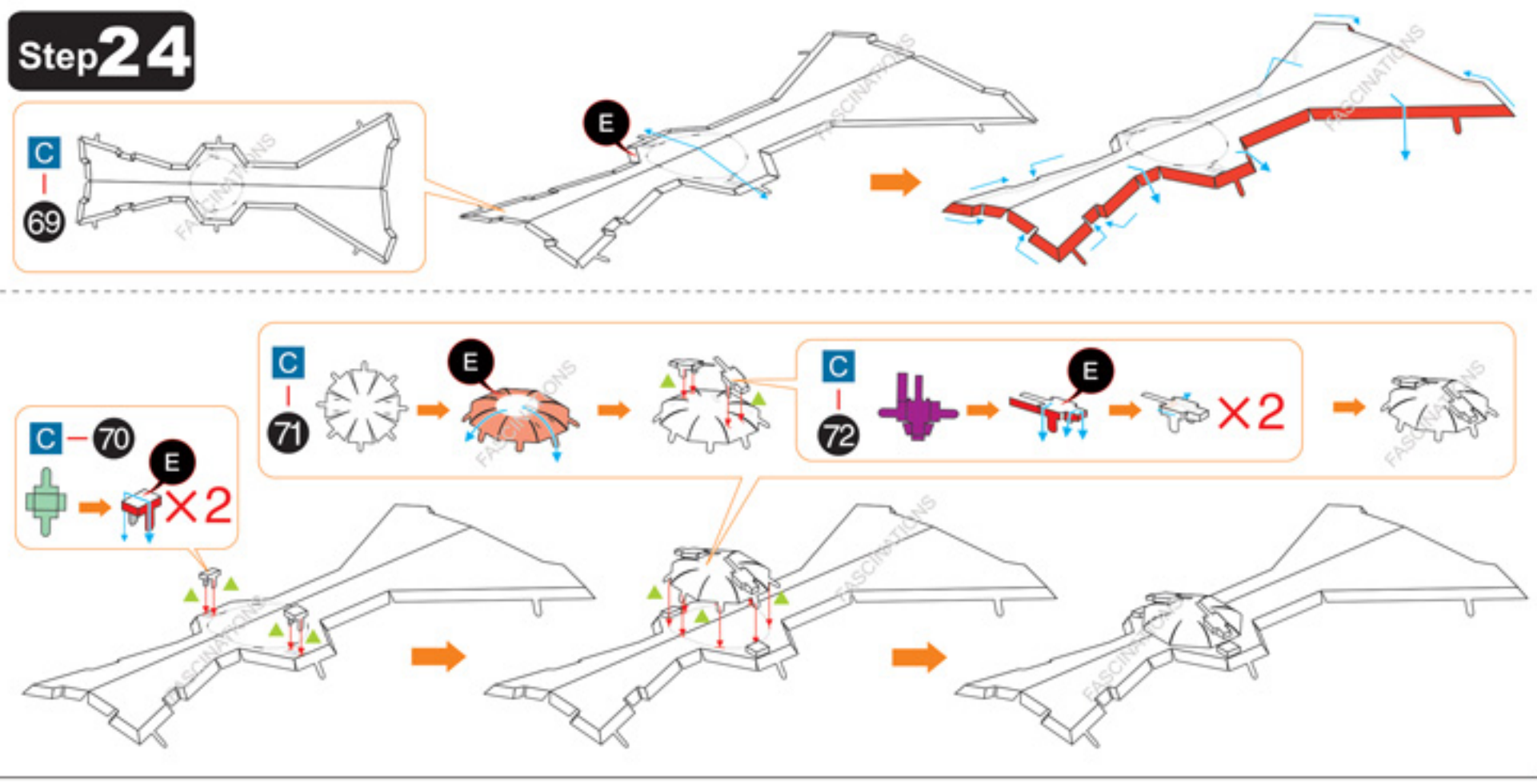
Step 21



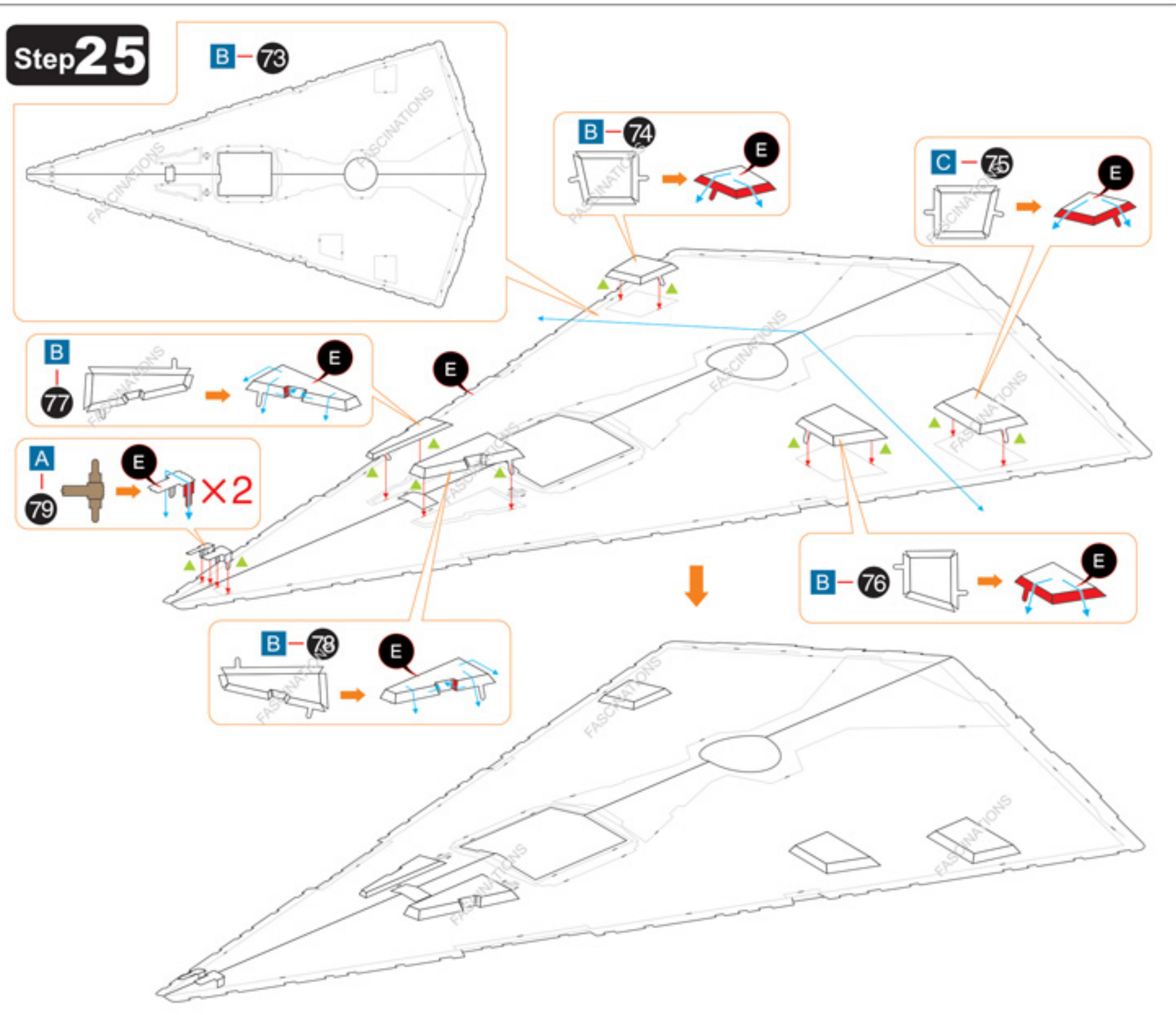
Step 23

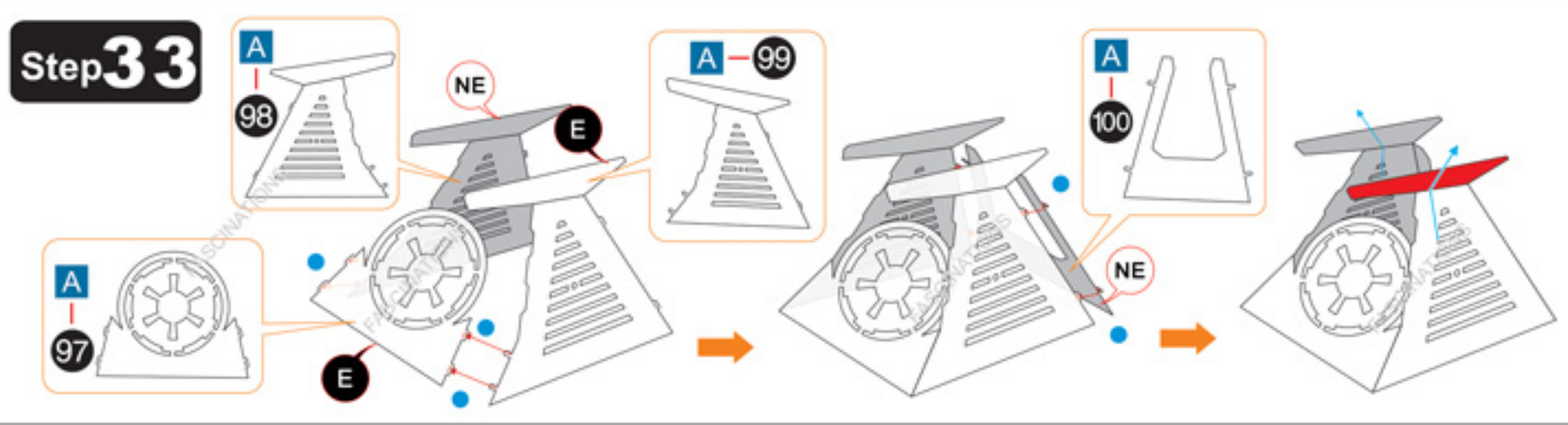
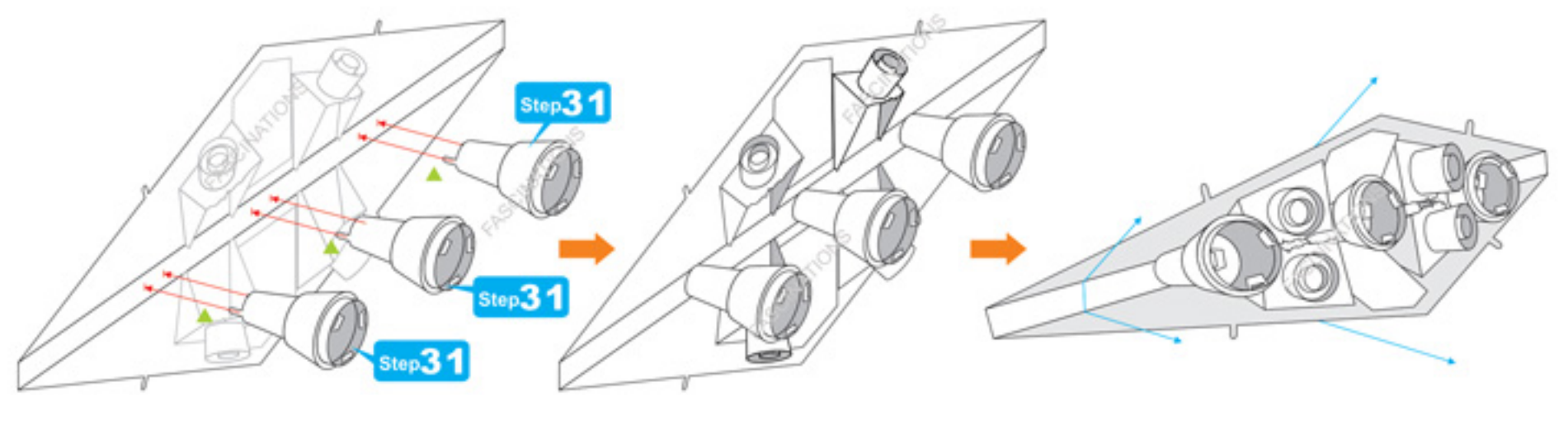
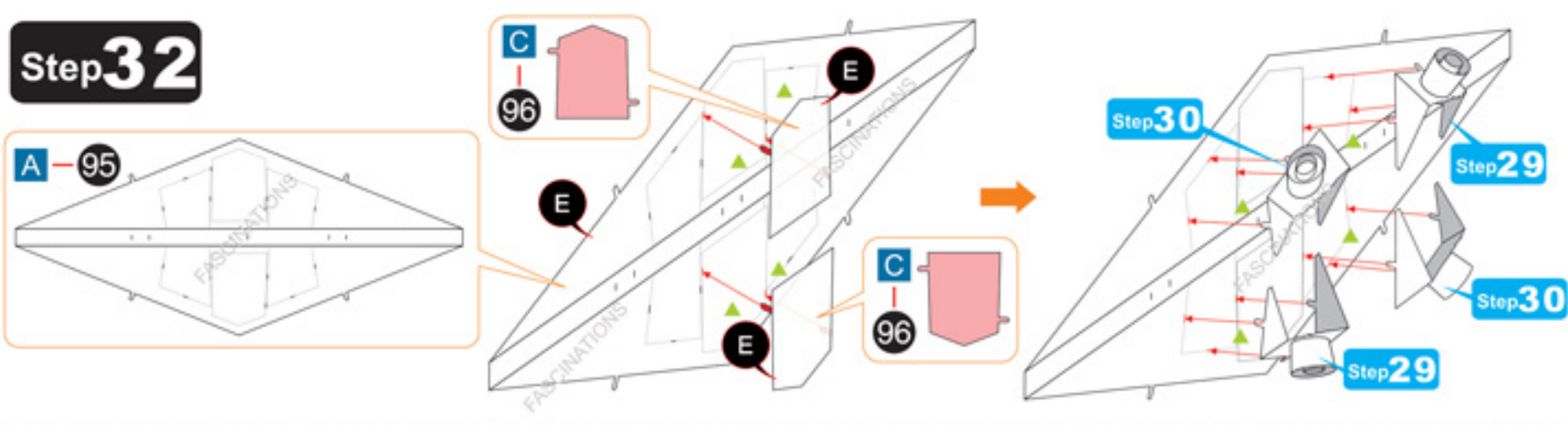
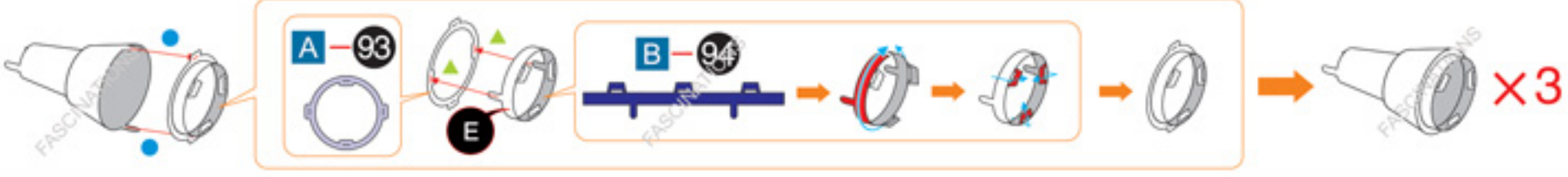
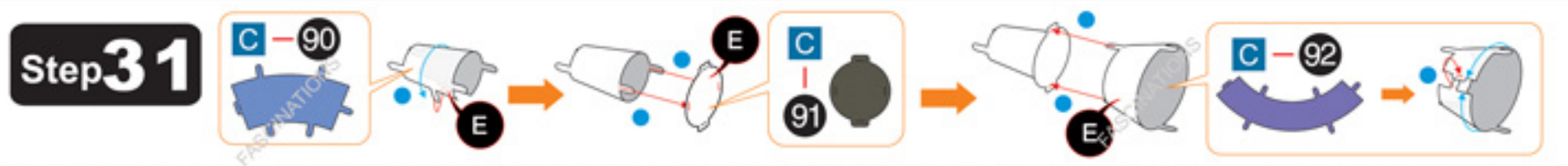
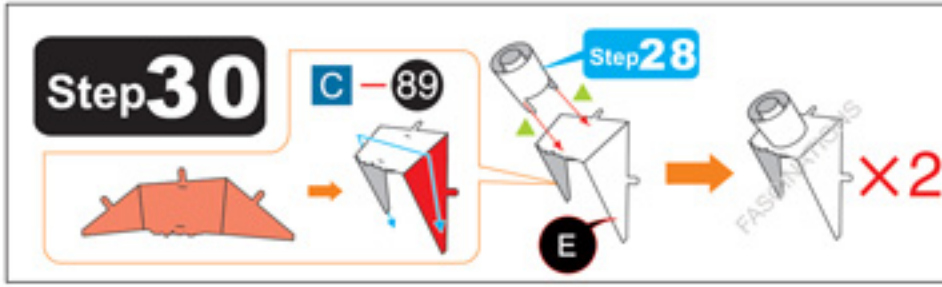
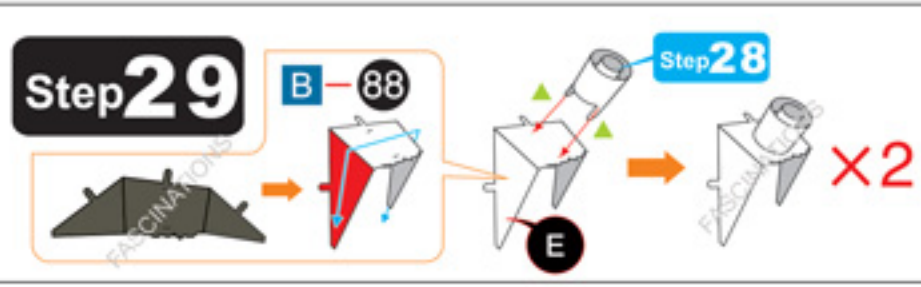
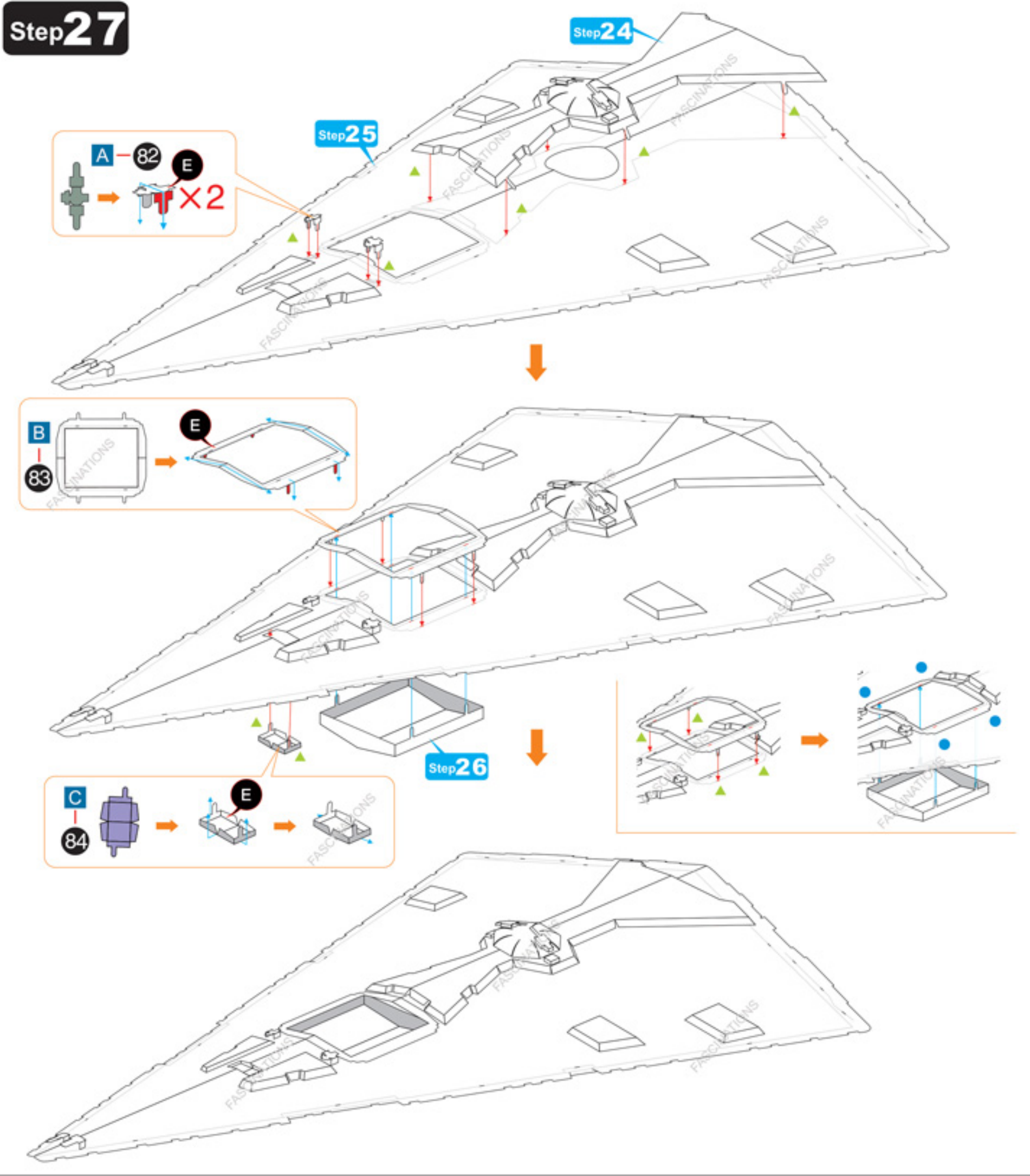
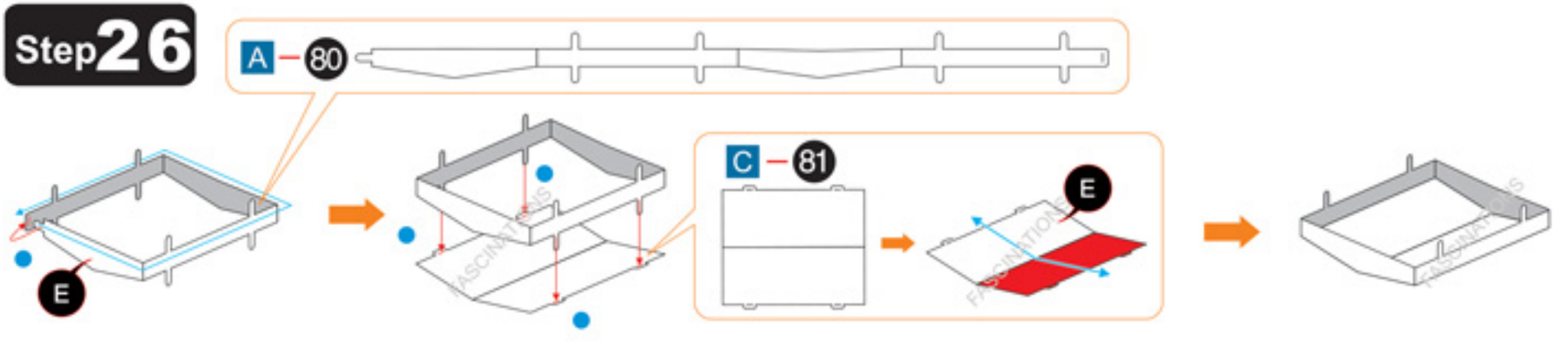


Step 24

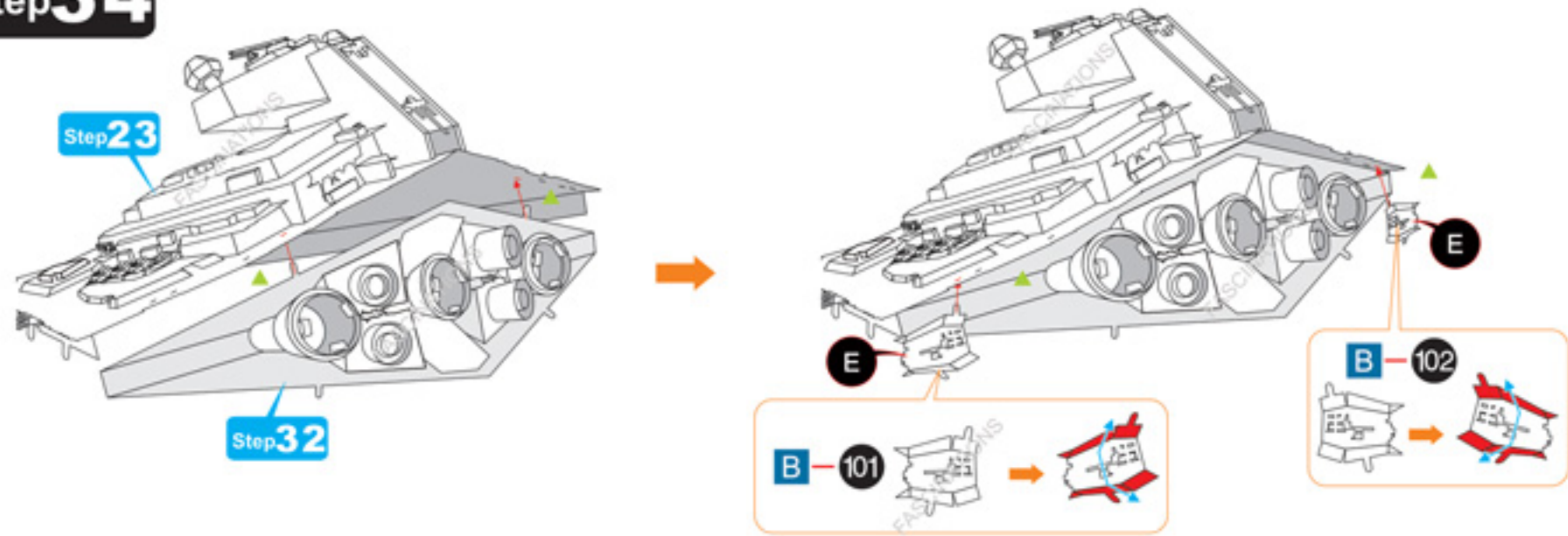


Step 25





Step 34



Step 35

