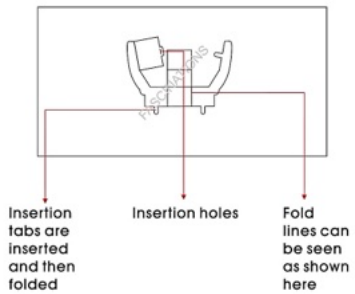


Western Star 4900 Log Truck & Trailer

Item No. ICX136



It is highly recommended that you visit [www.metalearth.com/360/icx136](http://www.metalearth.com/360/icx136) to see the completed model before assembling your own



**Legends:**

- E** Engraved/Color side
- NE** Non-engraved/Silver side
- Attention point
- Insert tab and bend 90 degrees
- Insert tab and twist 90 degrees

**Assembly tip:**

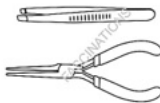
If needed, slightly twist tabs to hold parts together then untwist and bend them down for a nice finish

**Recommended tools:**

-Wire cutters: helpful for taking parts from the metal sheets.



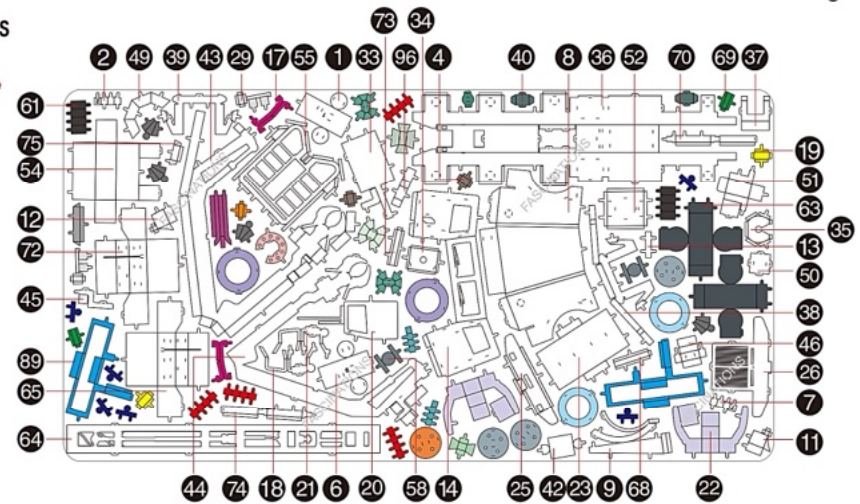
-Tweezers or needle nose pliers: helpful for folding parts, bending and twisting tabs.



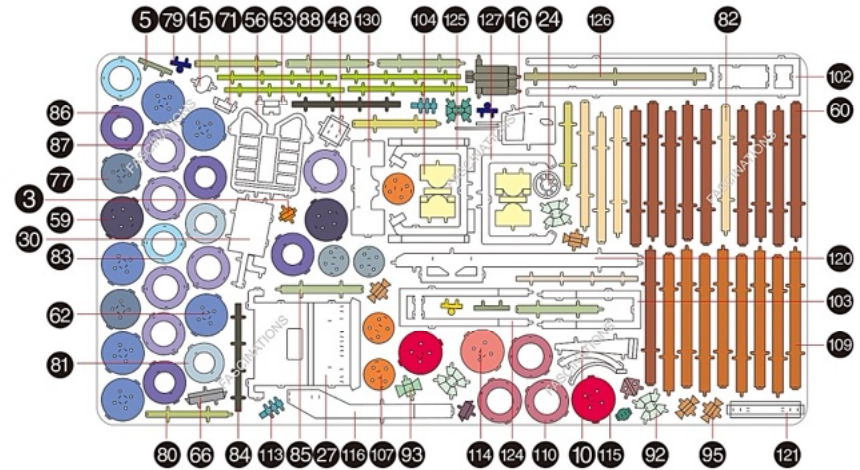
## Metal sheets

Parts that are in the same color are duplicates

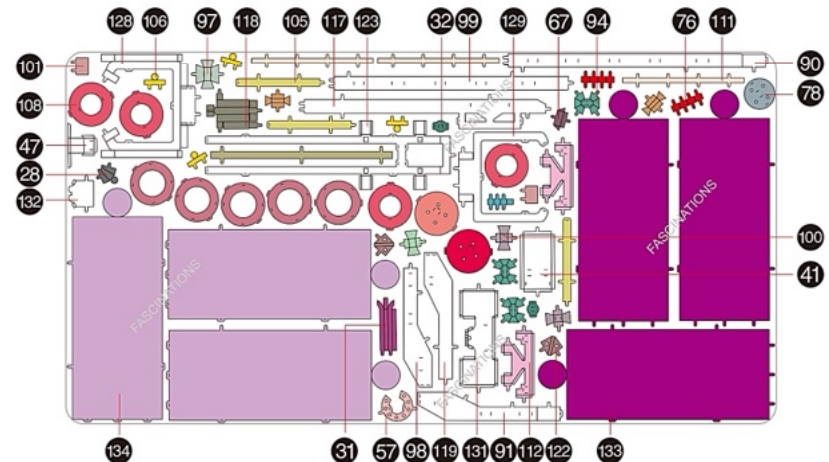
**A**



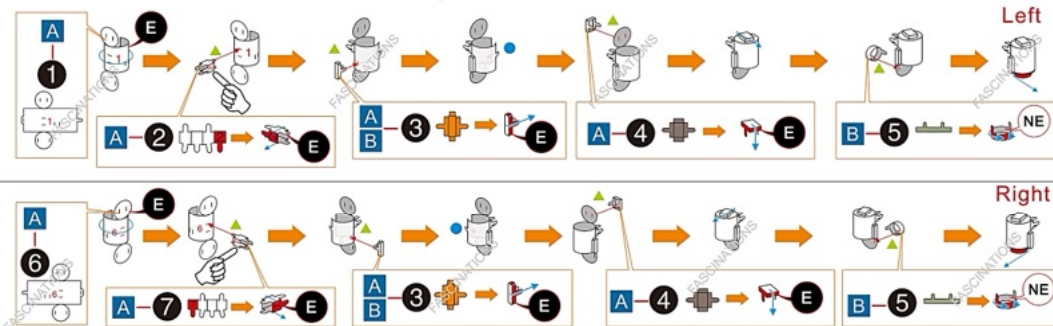
**B**



**C**

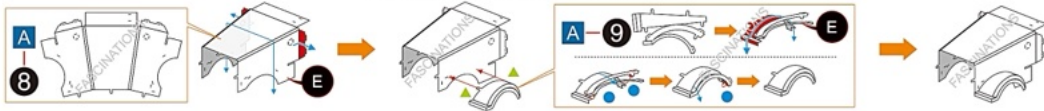


## Assembly Flow Chart: Log Truck

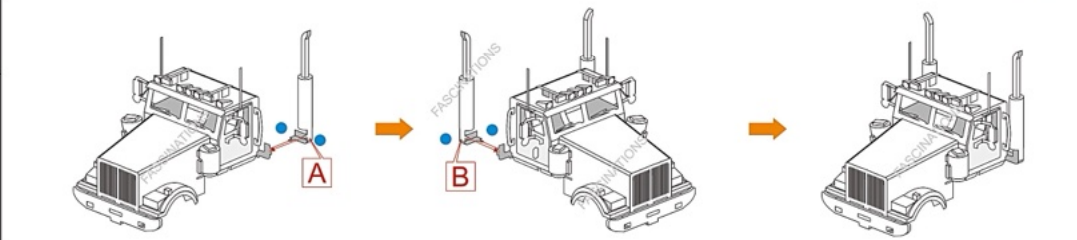
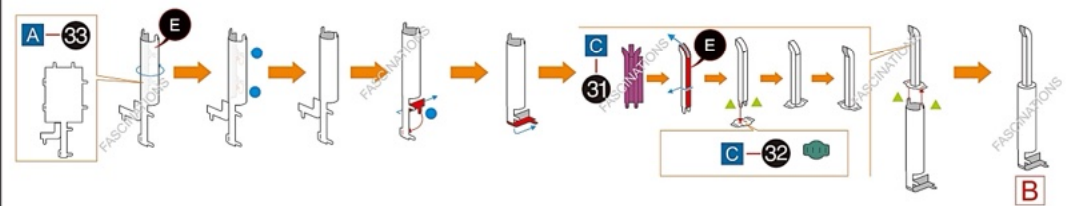
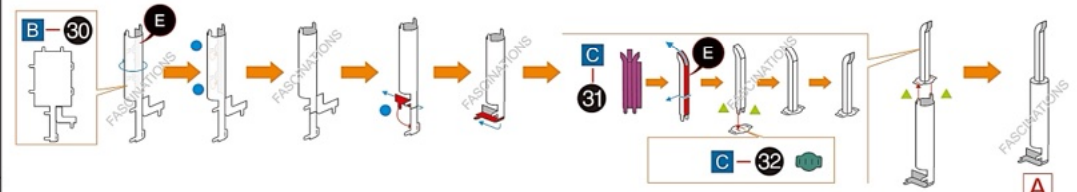
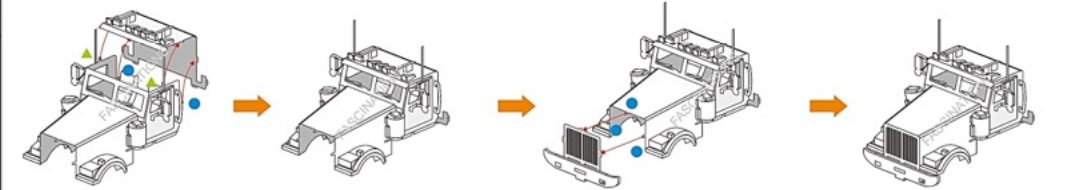
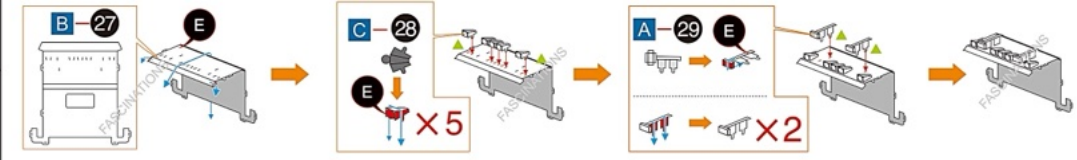
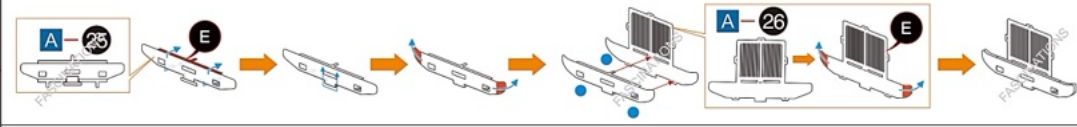
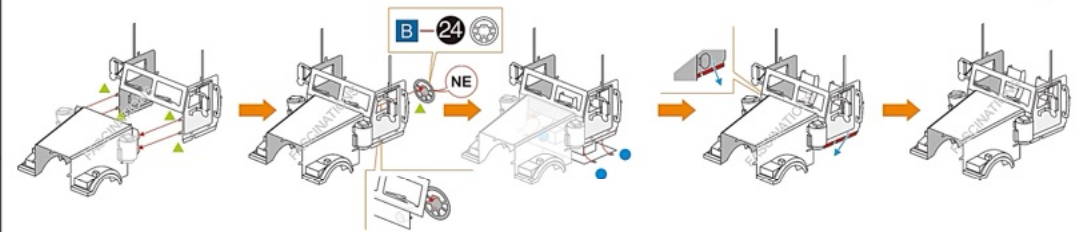
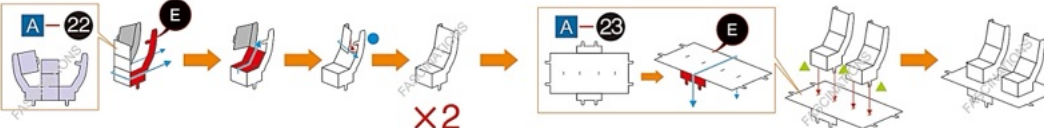
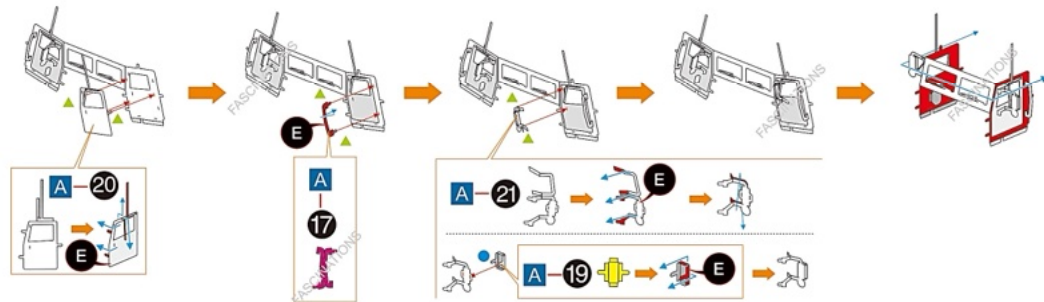
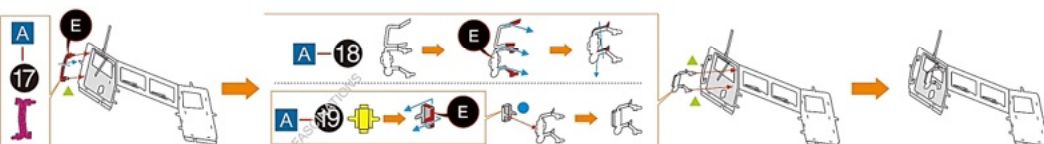
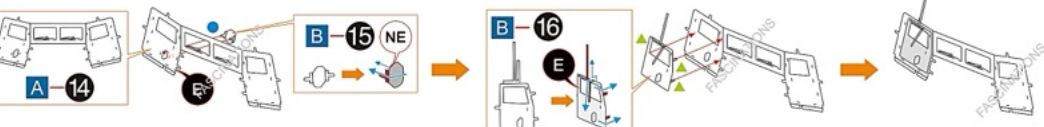
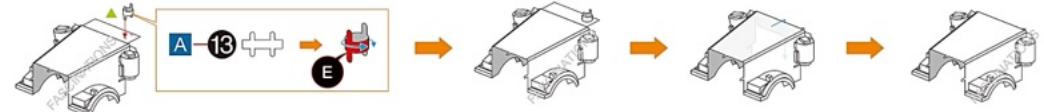
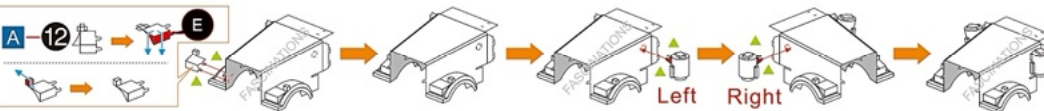
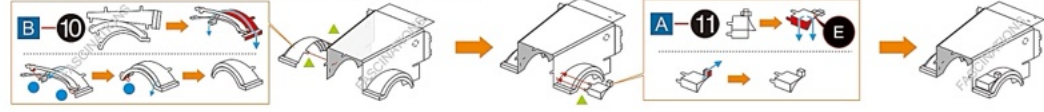


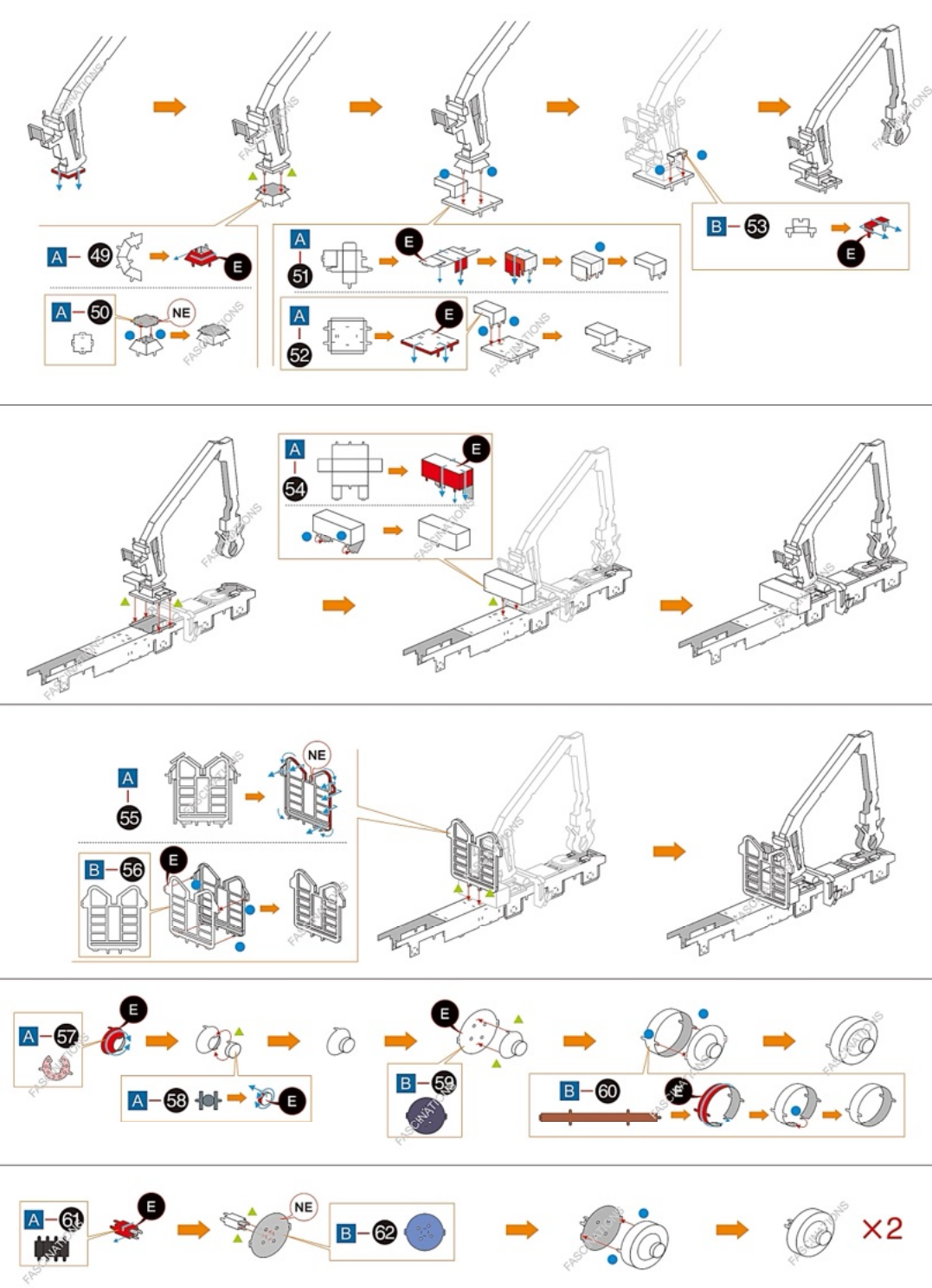
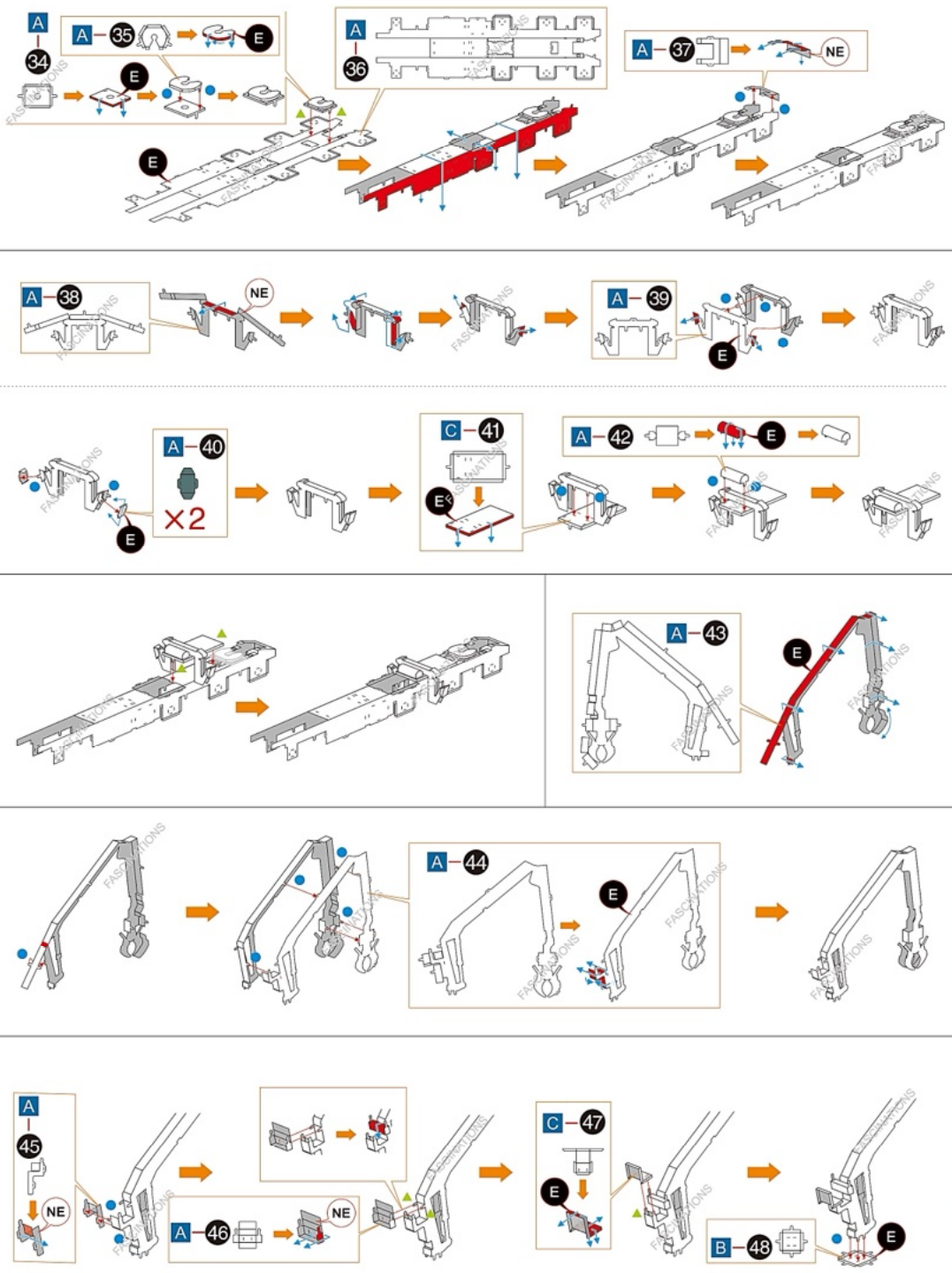
In order to avoid possible injury from sharp edges, please carefully discard the metal sheets after parts have been removed

Check the online product view on how to correctly bend A-9.

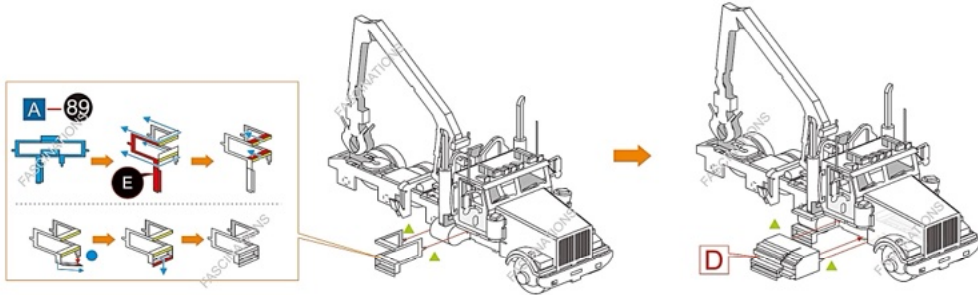
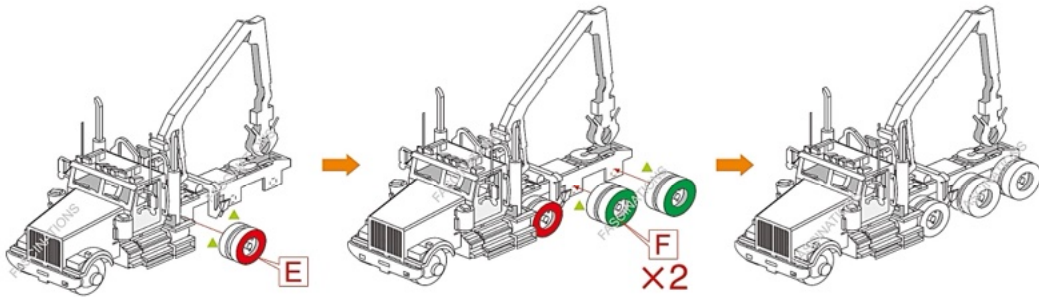
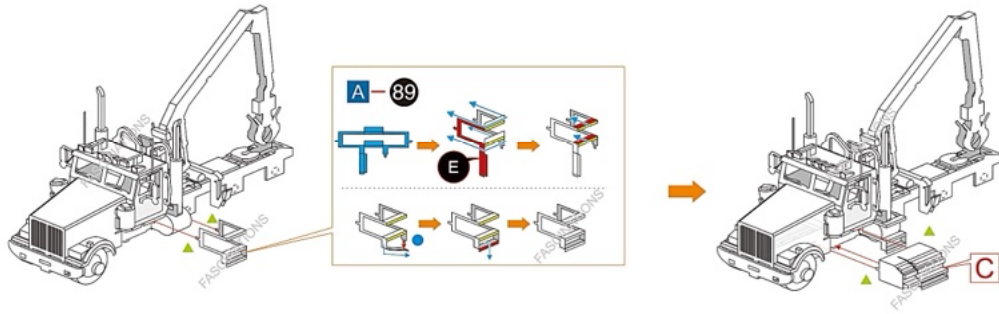


Check the online product view on how to correctly bend A-10.









### Assembly Flow Chart: Log Trailer

