



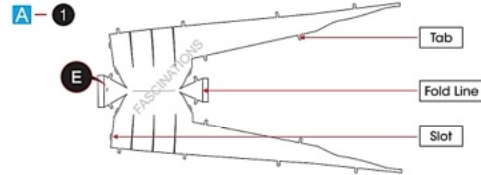
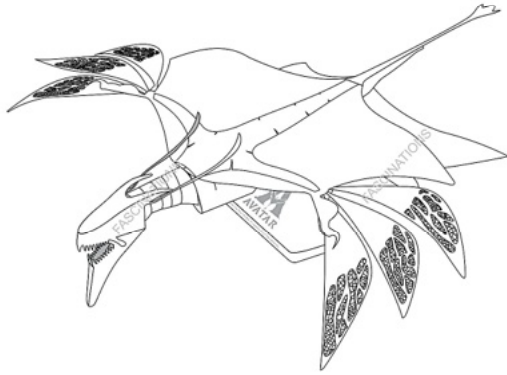
It is highly recommended that you visit www.metalearth.com/360/ICX255 to see the completed model before assembling your own



ICX255

NEYTIRI'S BANSHEE

TO CREATE THE BEST CONNECTIONS



Legends:

E Engraved/ Color side

NE Non - engraved/ Silver side

Attention point

Insert tab and bend 90 degrees

Insert tab and twist 90 degrees

Assembly tip:

If needed, slightly twist tabs to hold parts together then untwist and bend them down for a nice finish.

Yellow areas should be curled

Red areas should be folded



In order to avoid possible injury from sharp edges, please carefully discard the metal sheets after parts have been removed.

Recommended tools:

- Wire cutters: helpful for taking parts from the metal sheets.

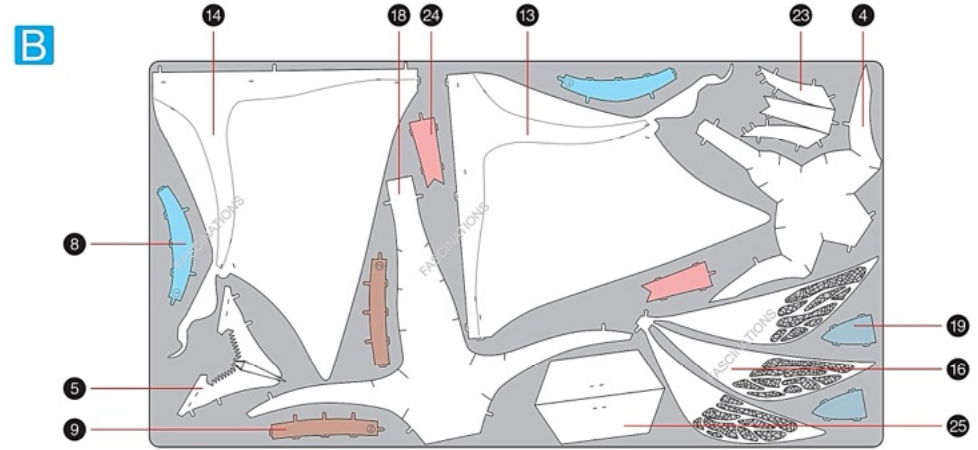
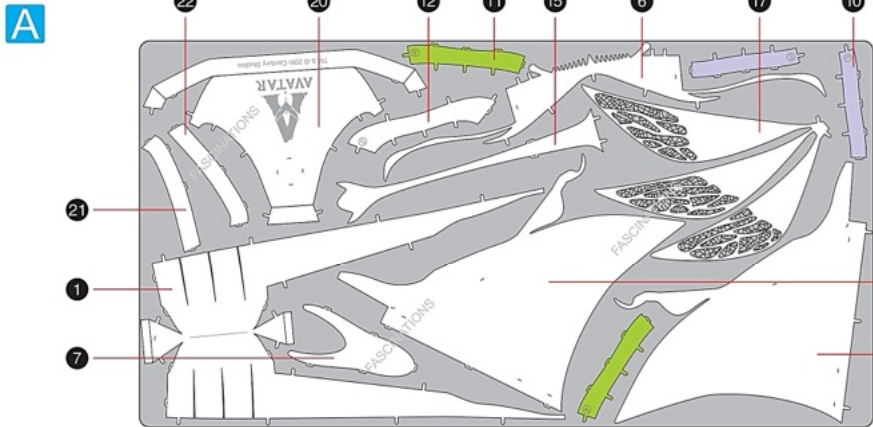


- Tweezers or needle nose pliers: helpful for folding parts, bending and twisting tabs.



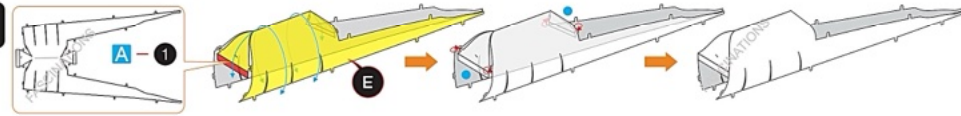
METAL SHEETS

Parts with same color are duplicates

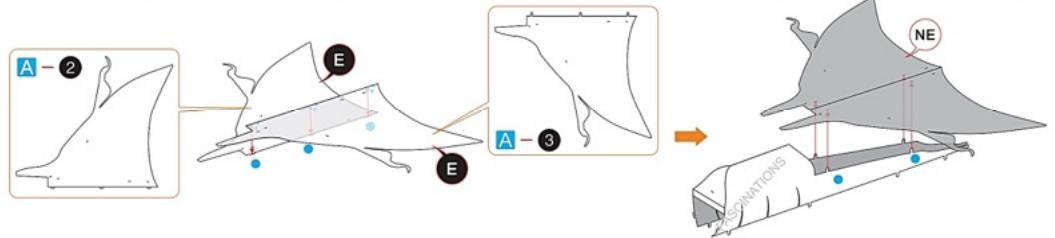


ASSEMBLY STEPS

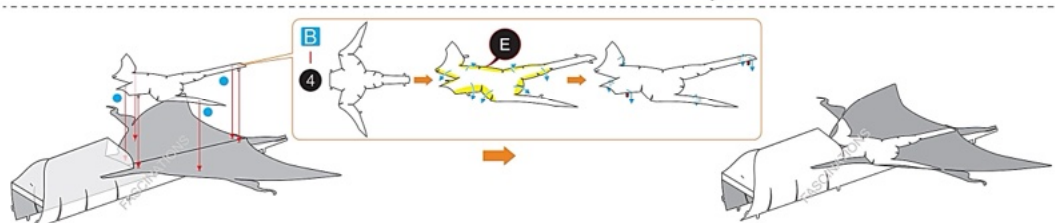
Step 1



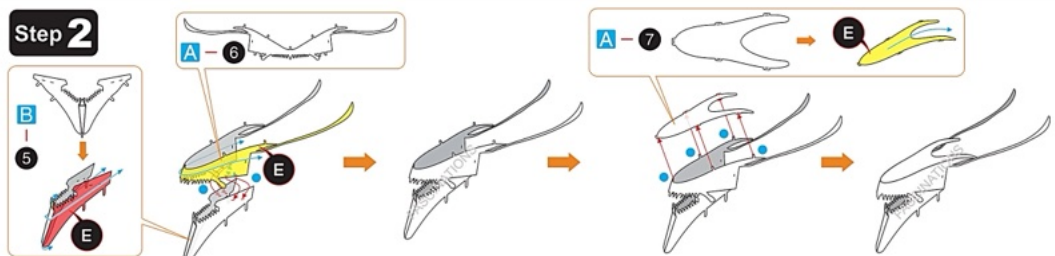
A-2



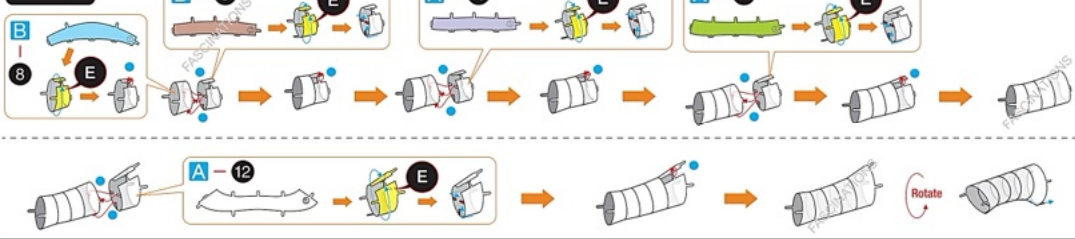
B-4



Step 2



Step 3



Step 4

