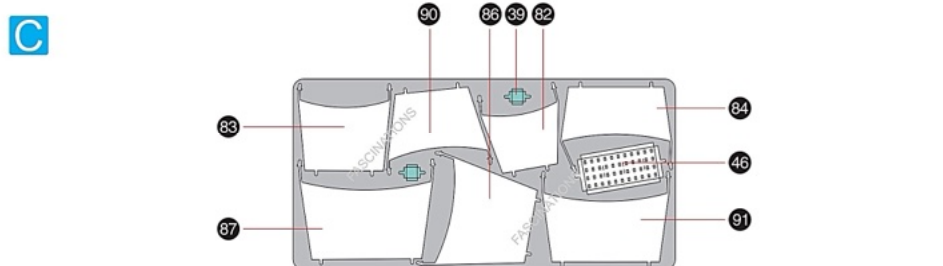
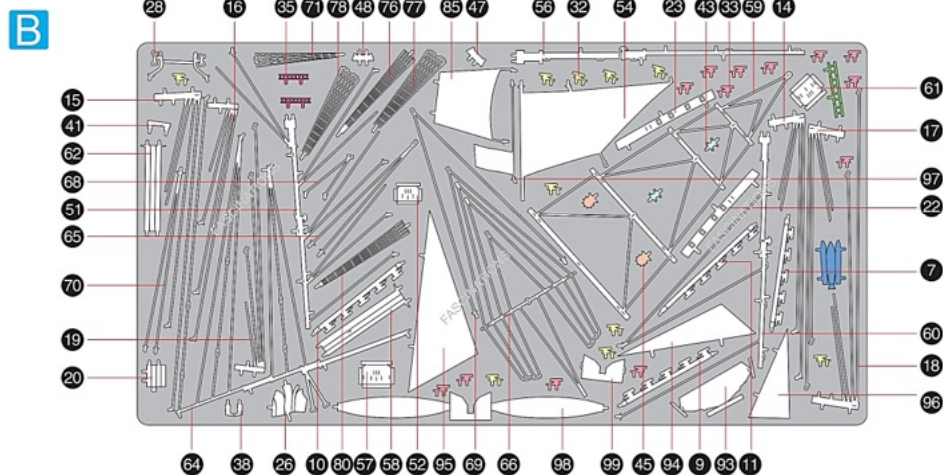
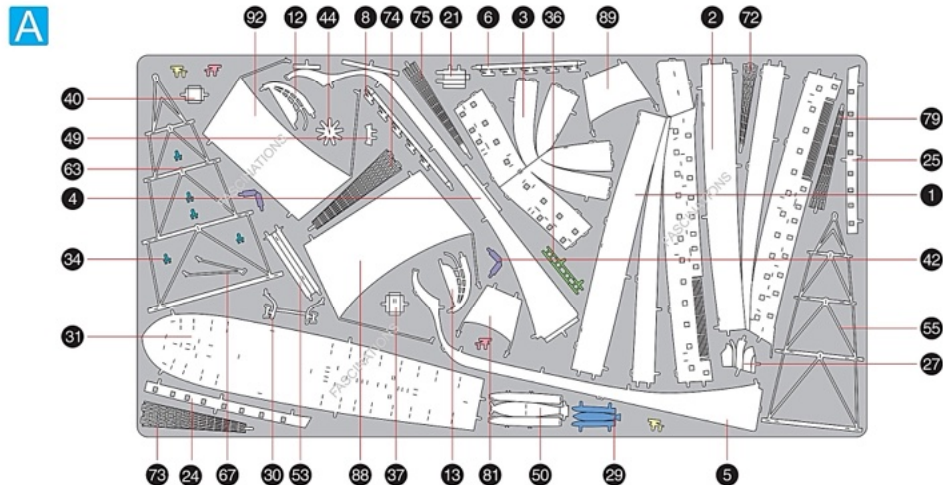


## METAL SHEETS

Parts with same color are duplicates



# Metal Earth.

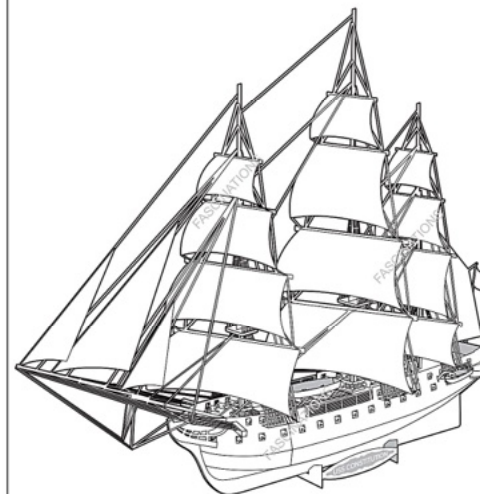
360° view



It is highly recommended that you visit [www.metalearth.com/360/PS2002](http://www.metalearth.com/360/PS2002) to see the completed model before assembling your own

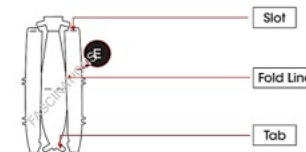
## Premium Series

### PS2002 USS CONSTITUTION



### TO CREATE THE BEST CONNECTIONS

**A - 50**



#### Legends:

- E** Engraved/ Color side
- NE** Non-engraved/ Silver side
- Attention point
- Insert tab and bend 90 degrees
- Insert tab and twist 90 degrees

#### Assembly tip:

If needed, slightly twist tabs to hold parts together then untwist and bend them down for a nice finish.

- Yellow areas should be curled
- Red areas should be folded

#### Recommended tools:

- Wire cutters: helpful for taking parts from the metal sheets.



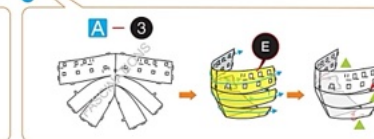
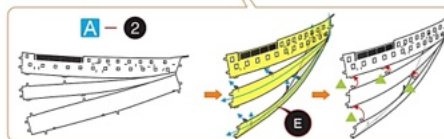
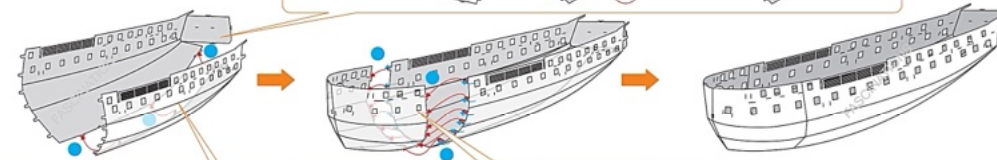
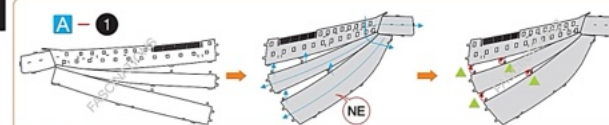
- Tweezers or needle nose pliers: helpful for folding parts, bending and twisting tabs.

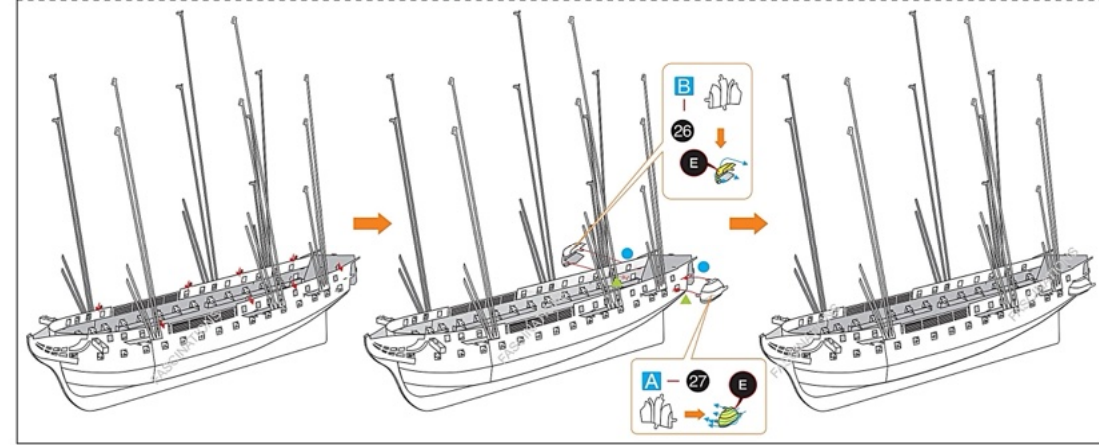
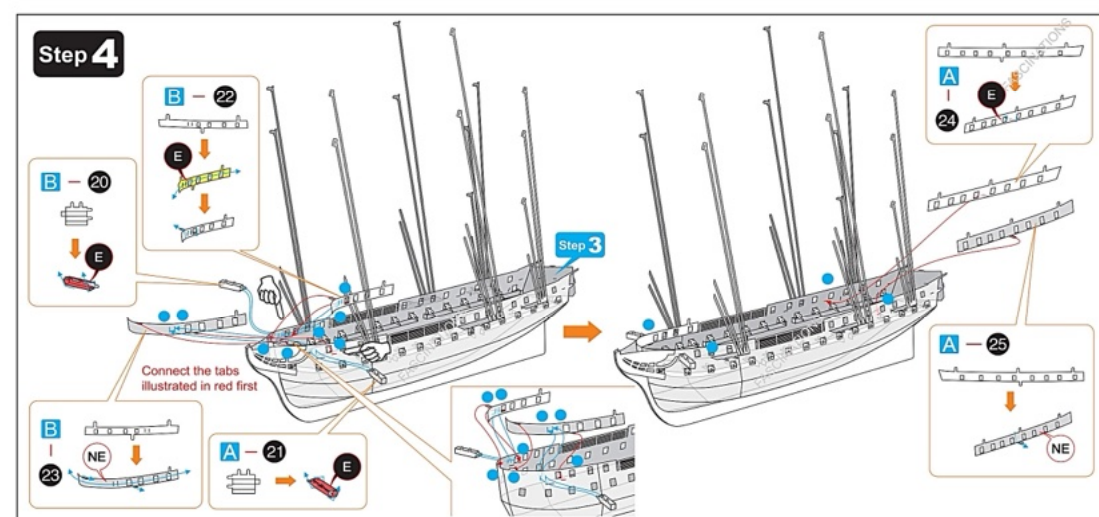
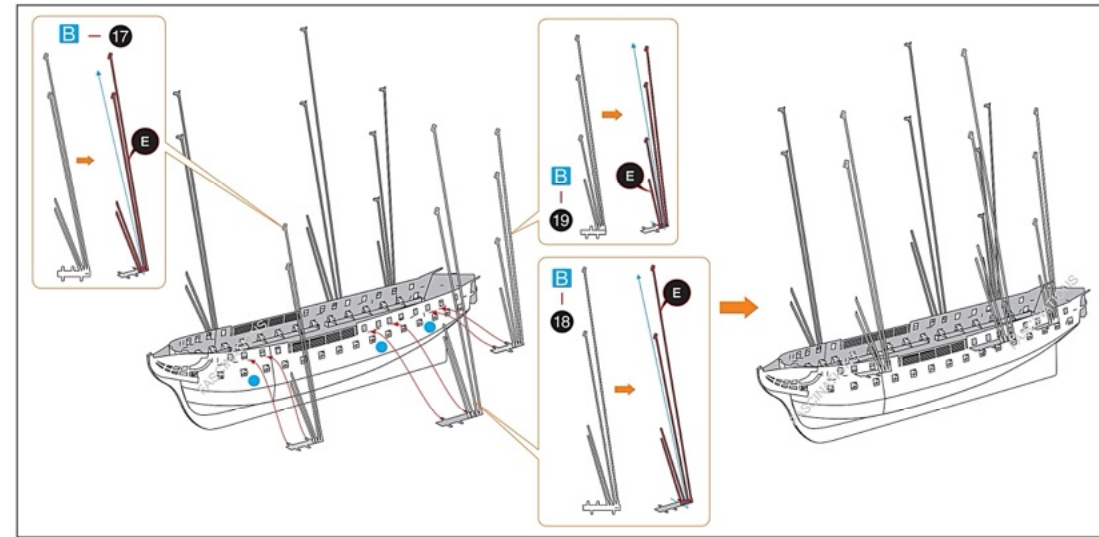
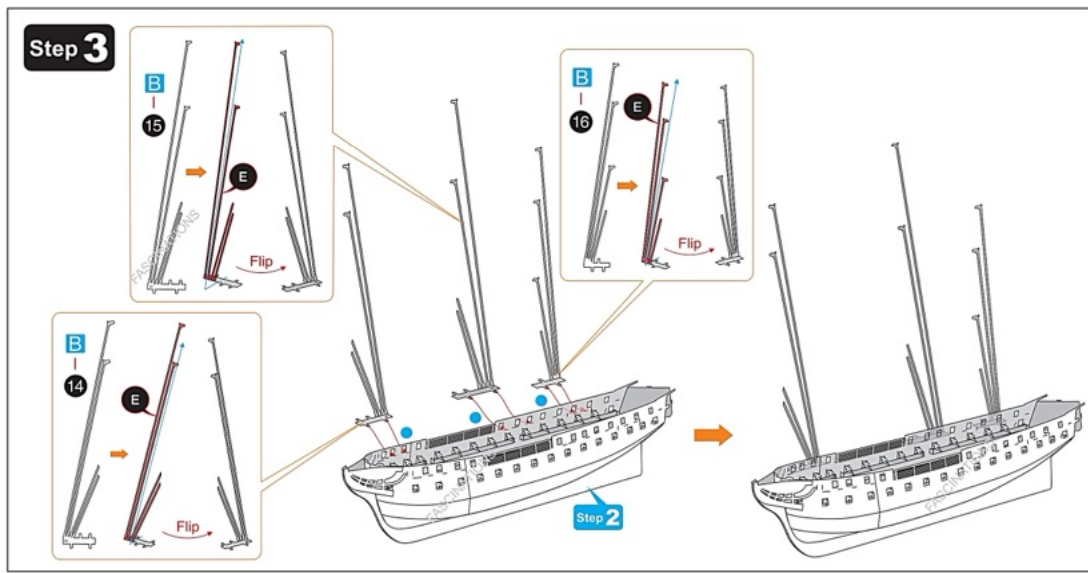
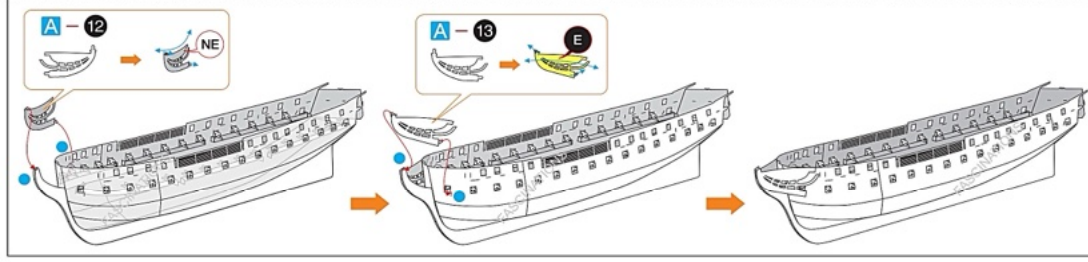
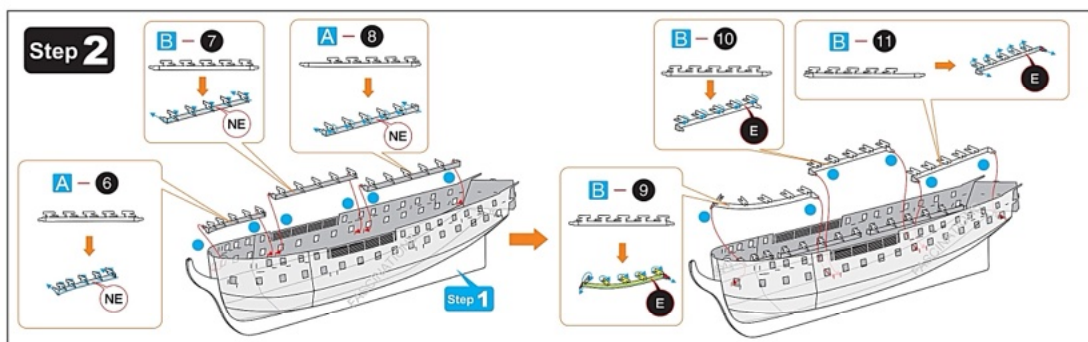
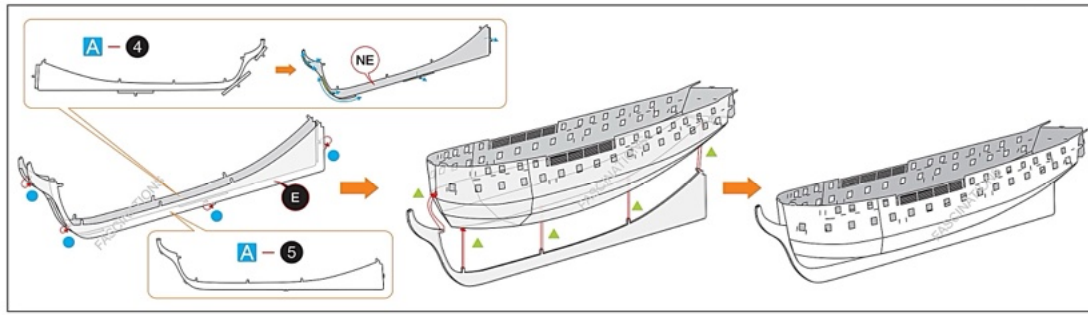


In order to avoid possible injury from sharp edges, please carefully discard the metal sheets after parts have been removed.

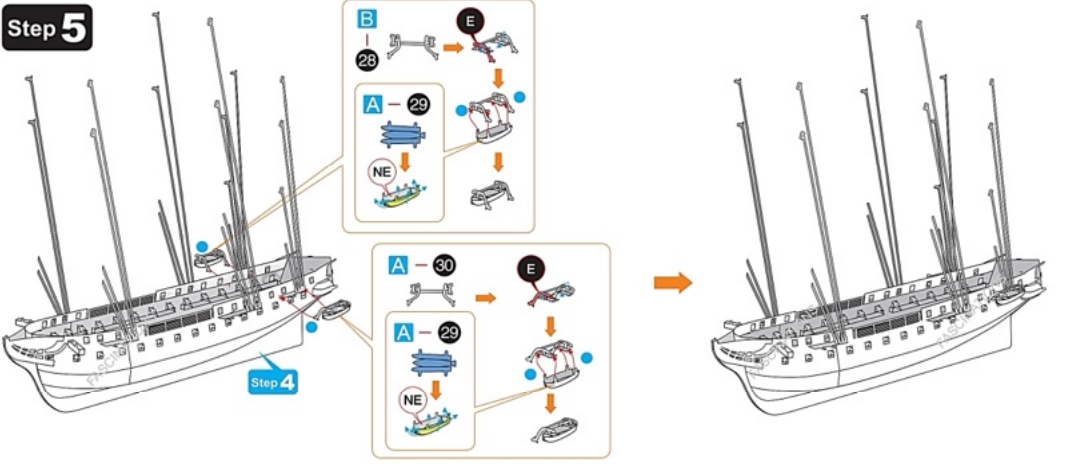
### ASSEMBLY STEPS

#### Step 1

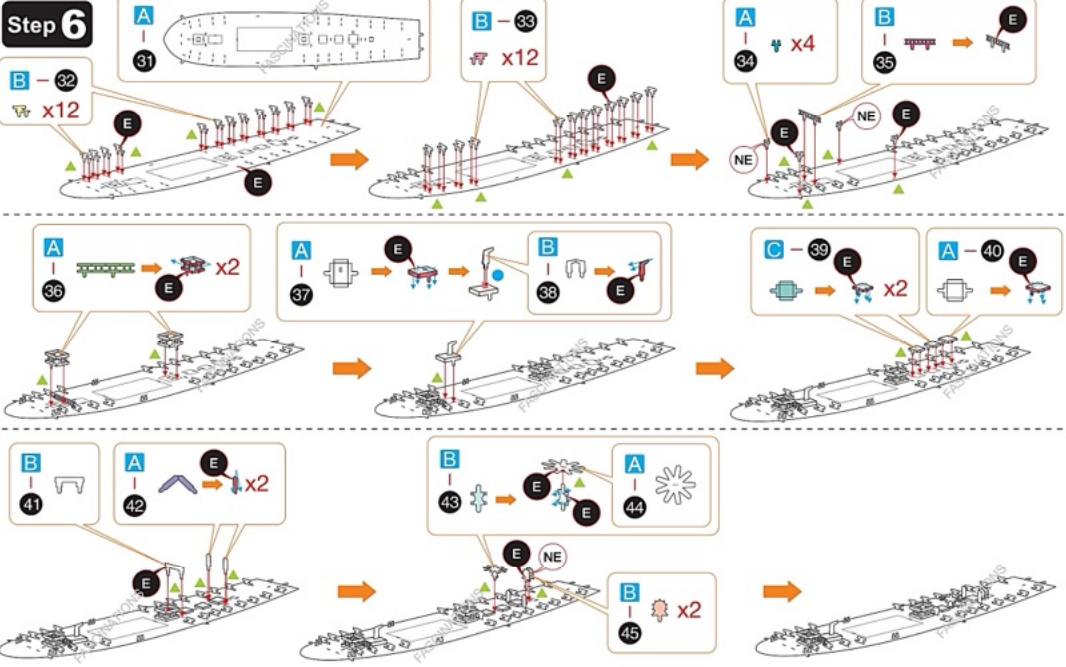




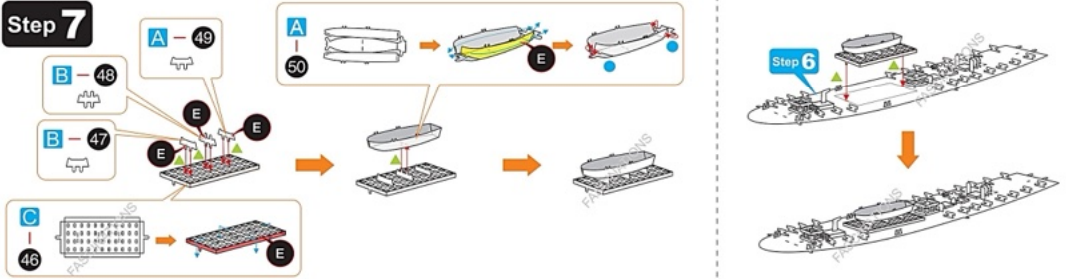
Step 5



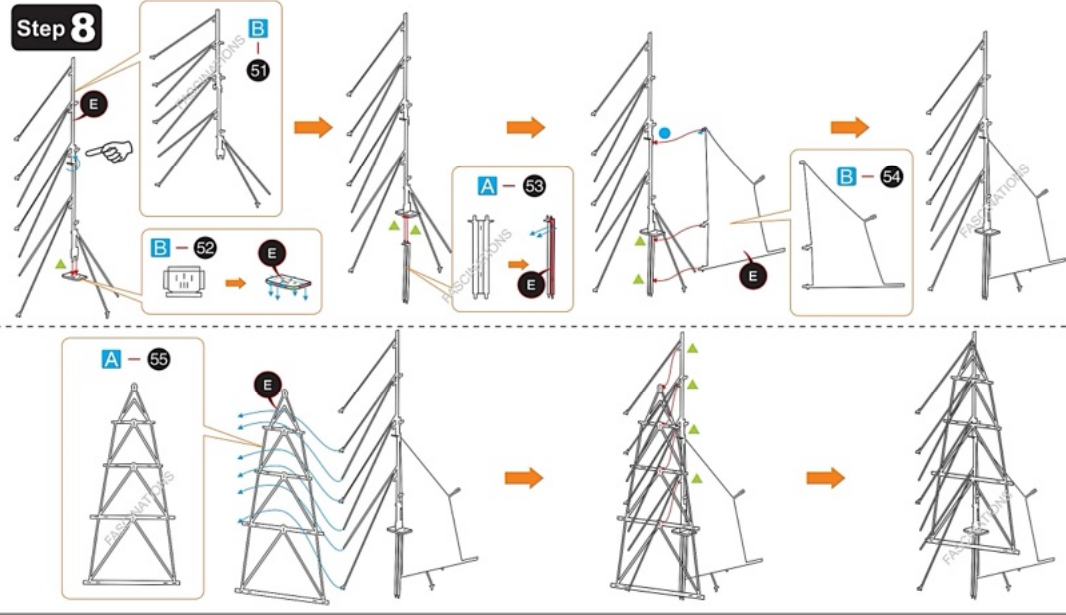
Step 6



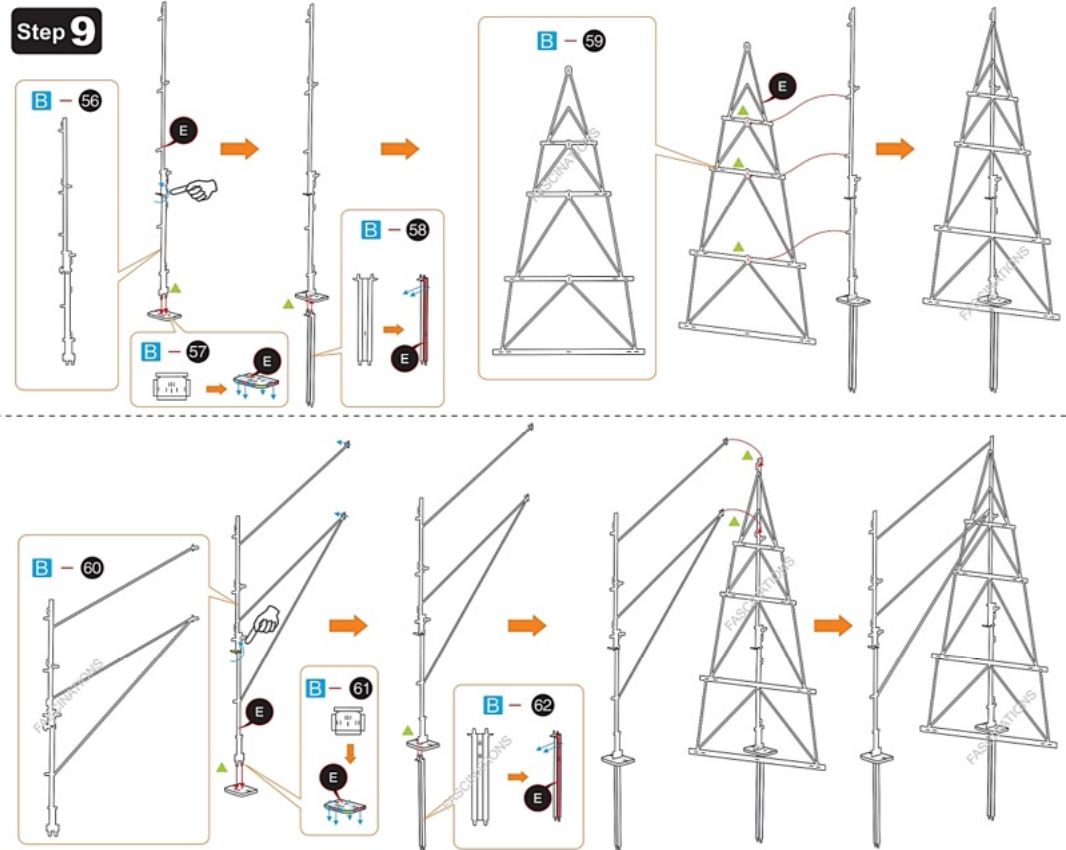
Step 7



Step 8

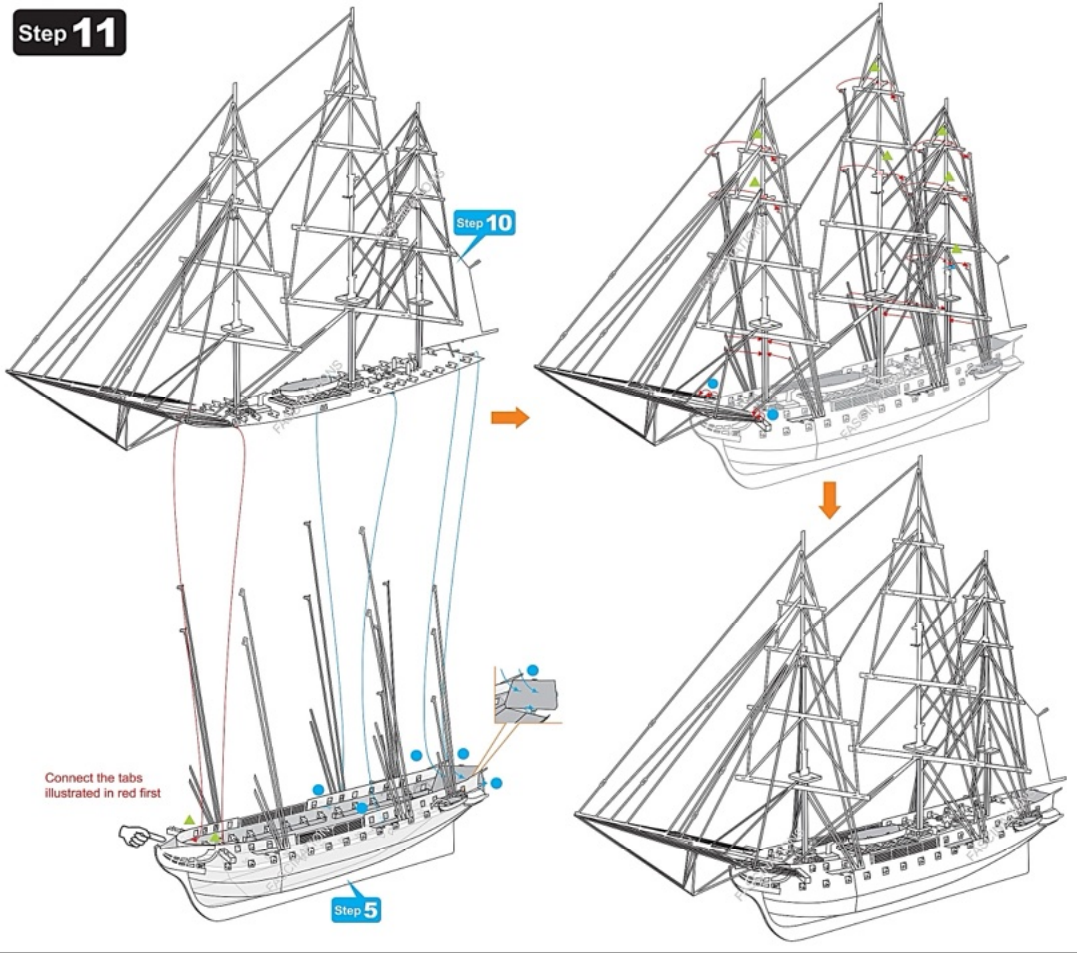


Step 9

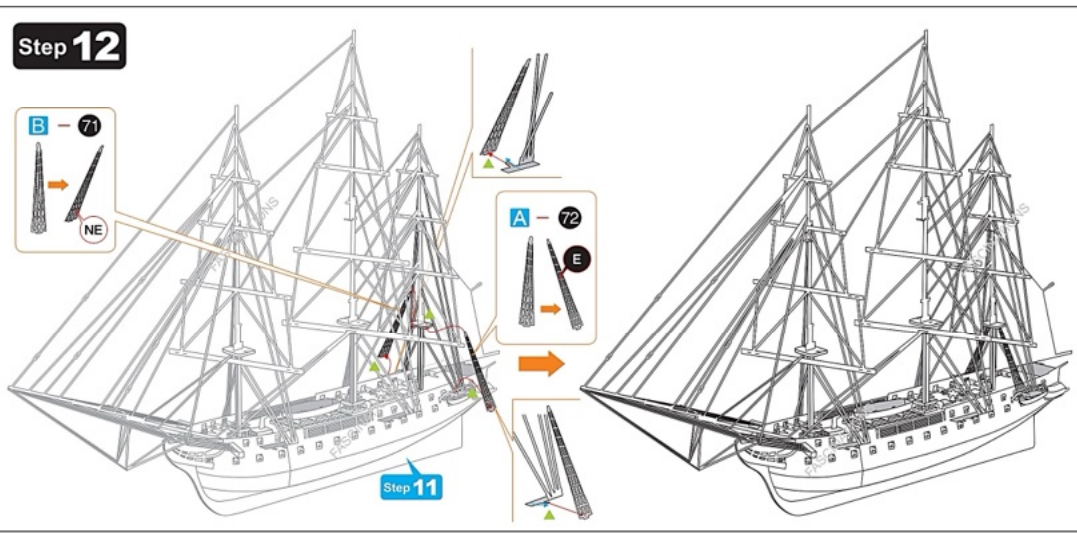




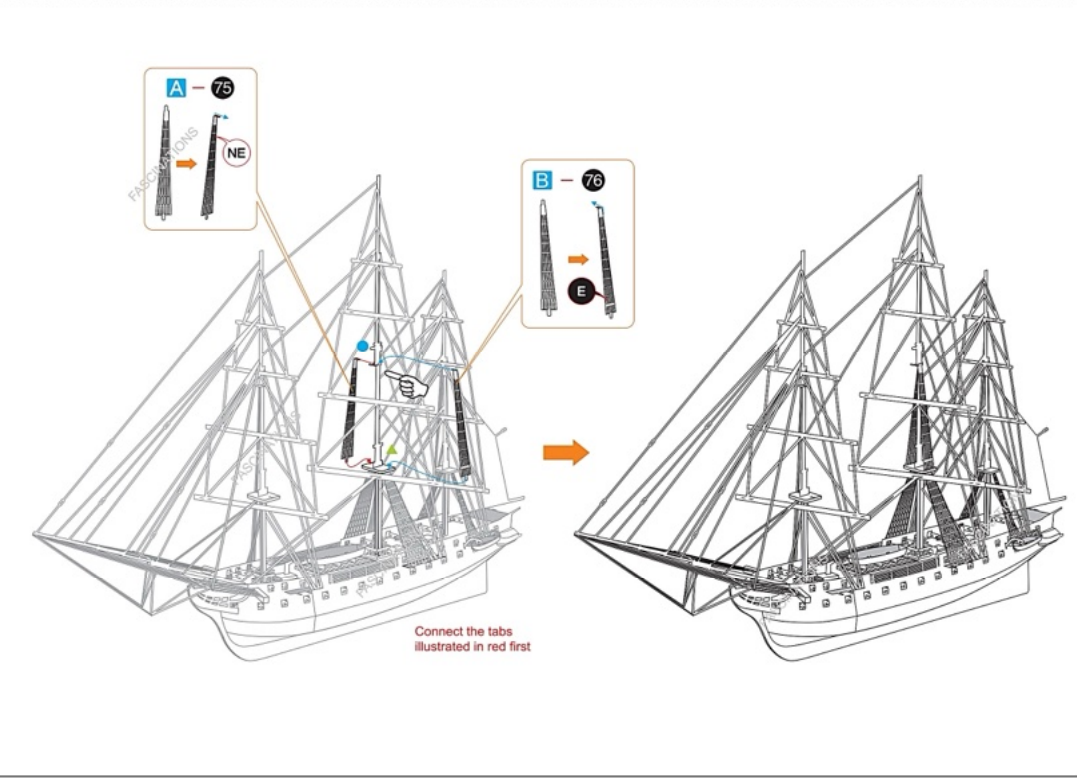
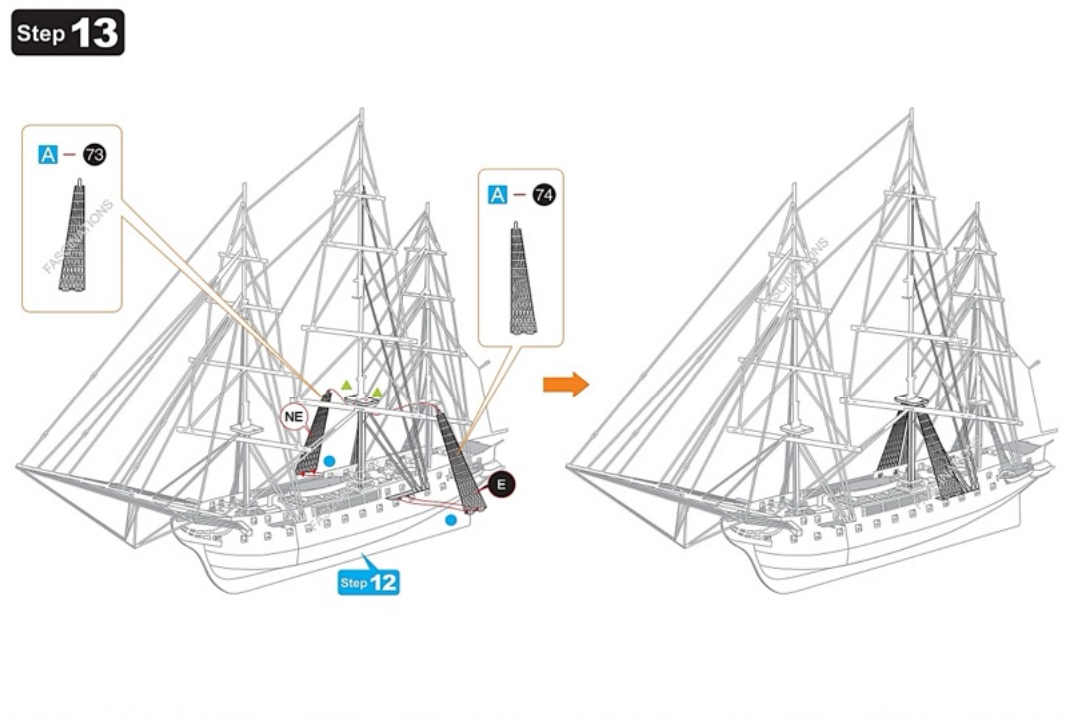
**Step 11**



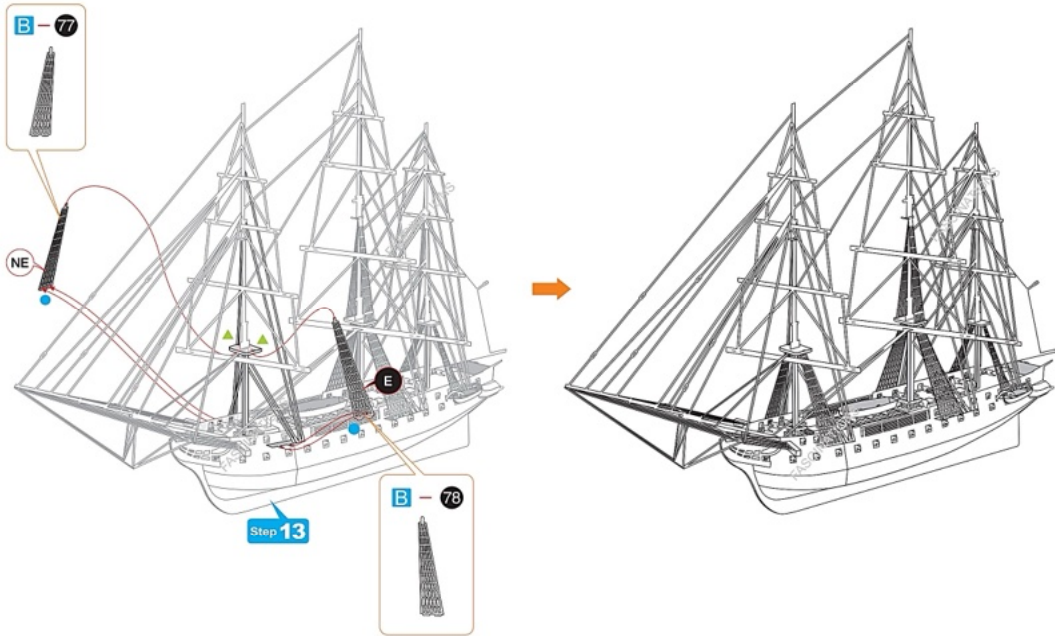
**Step 12**



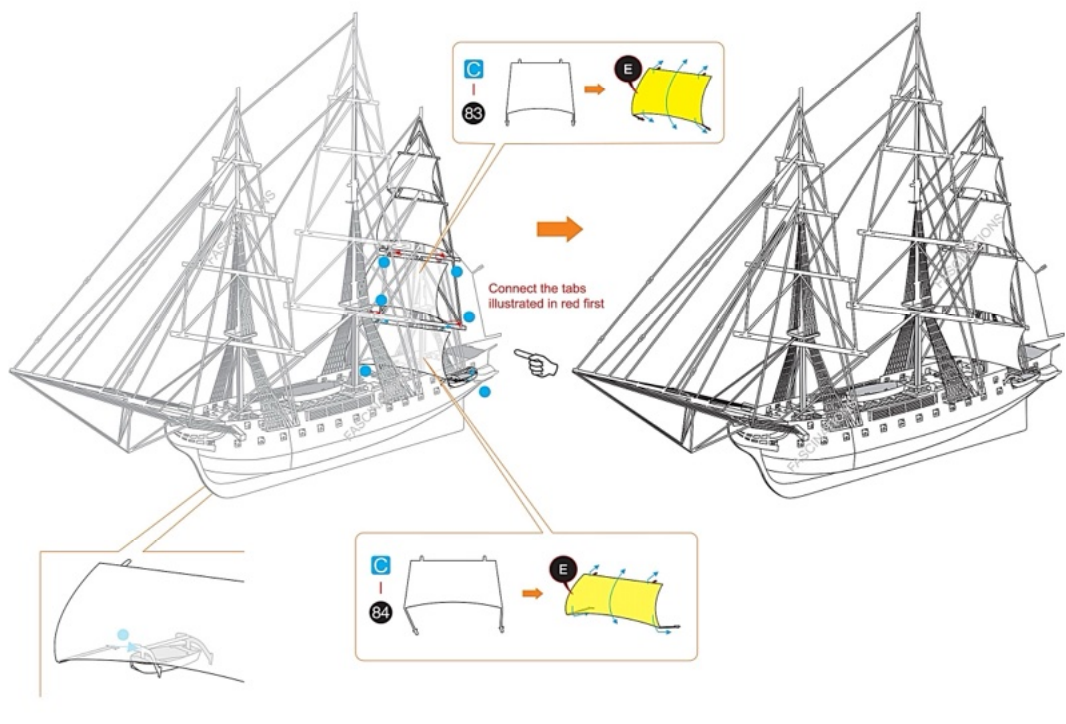
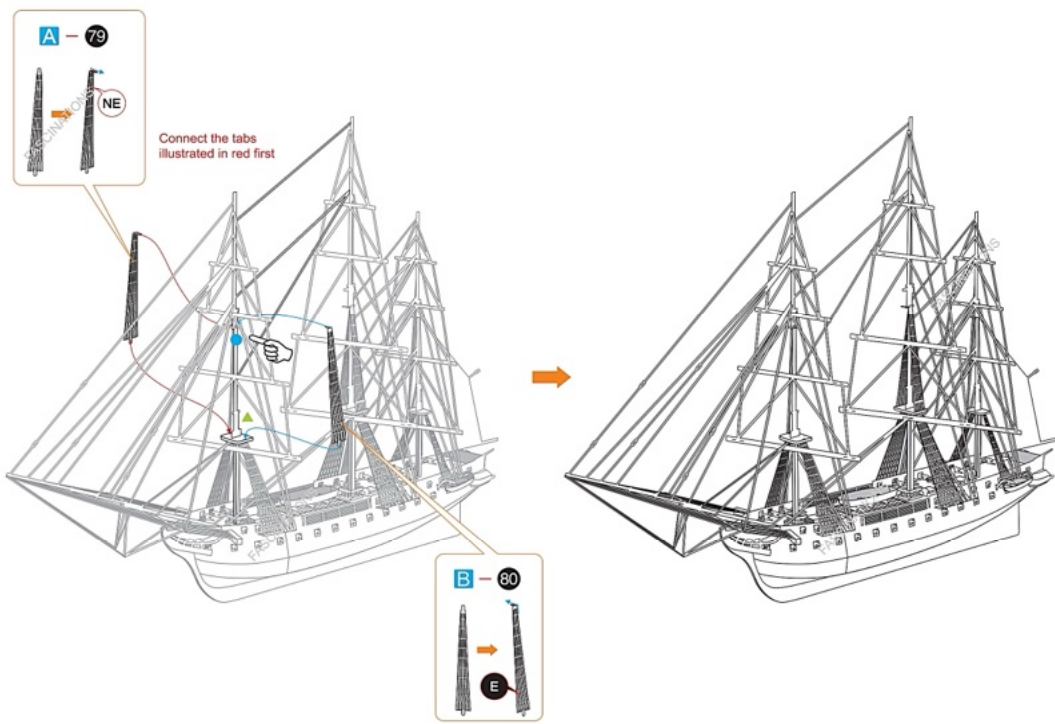
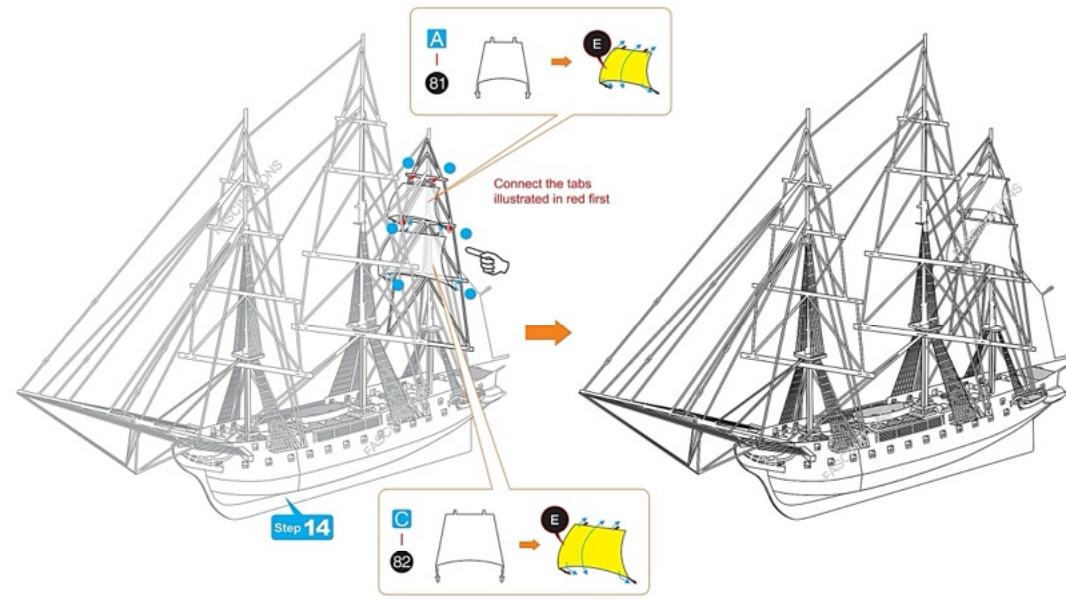
**Step 13**



Step 14



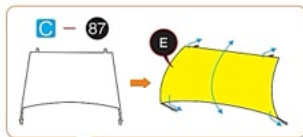
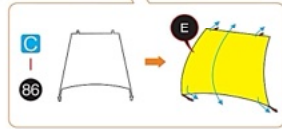
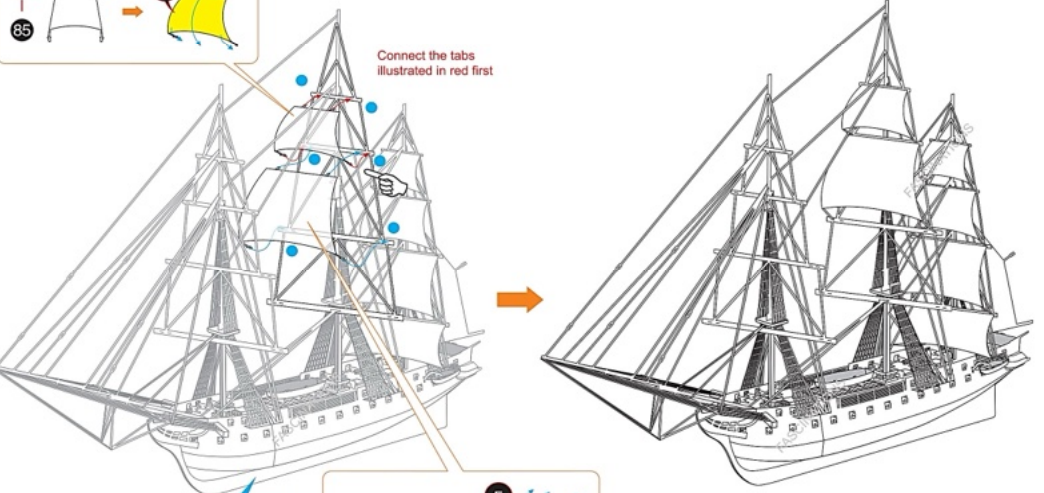
Step 15



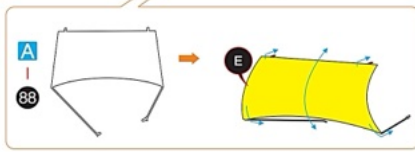
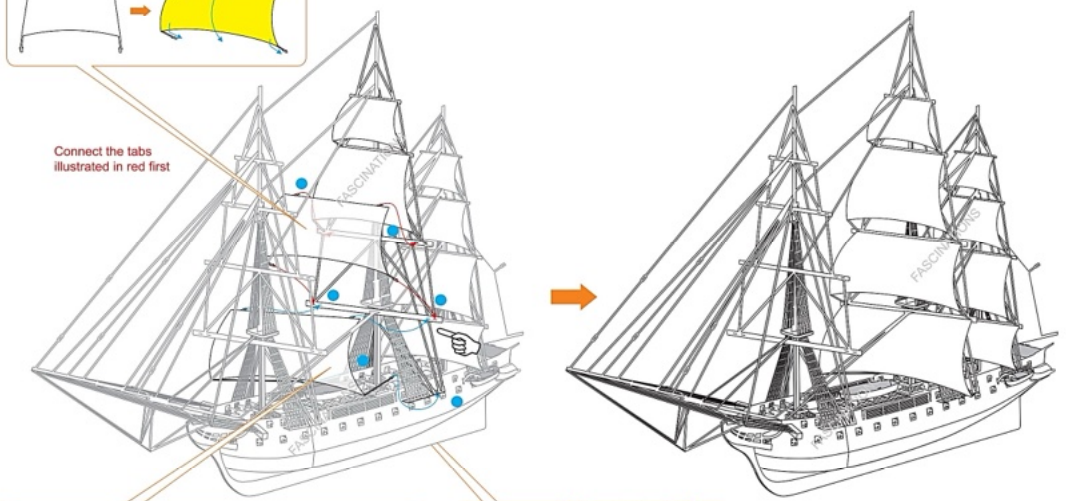
Step 16



Connect the tabs illustrated in red first



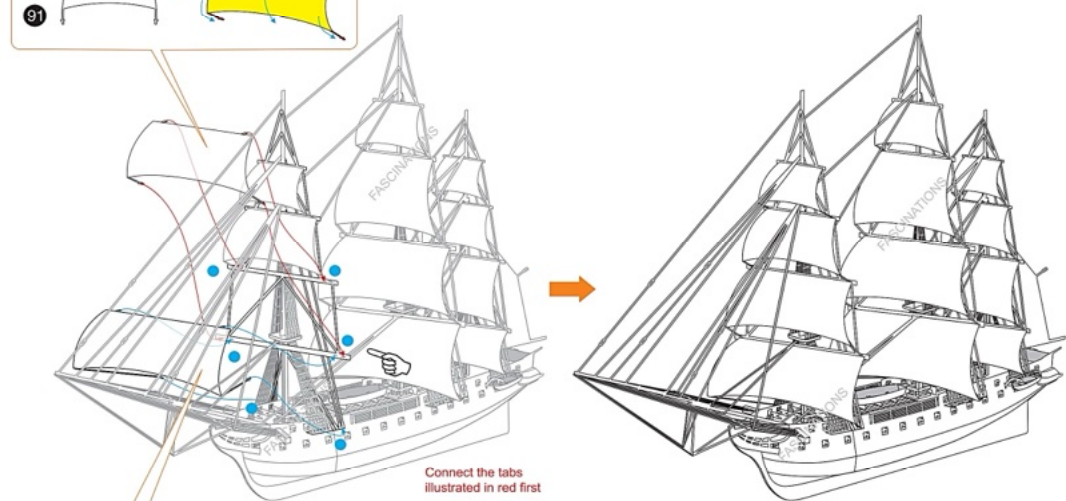
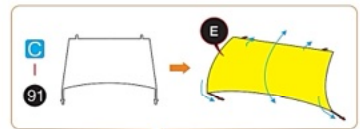
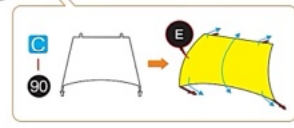
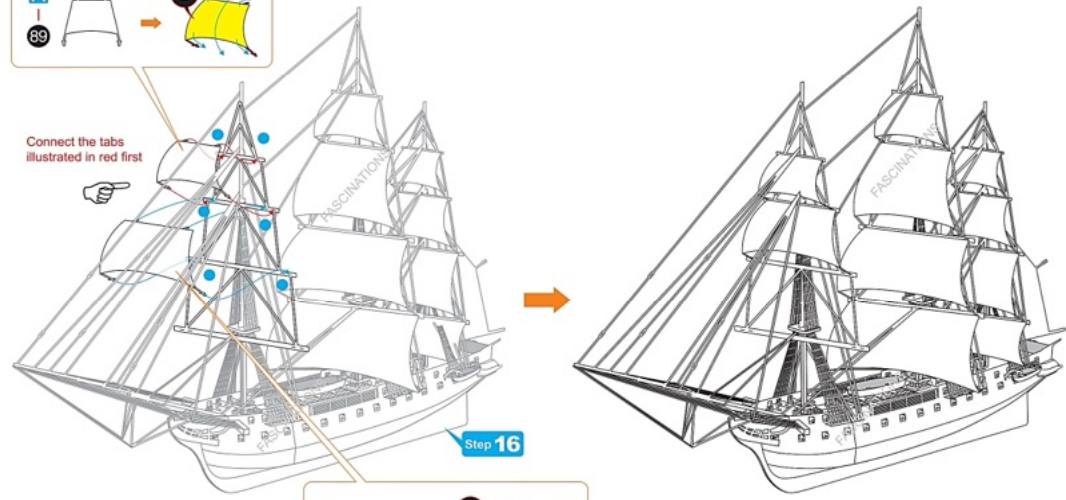
Connect the tabs illustrated in red first



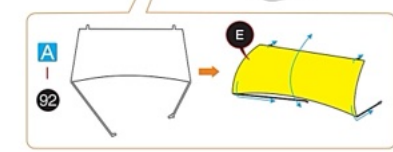
Step 17



Connect the tabs illustrated in red first



Connect the tabs illustrated in red first



Step 18

