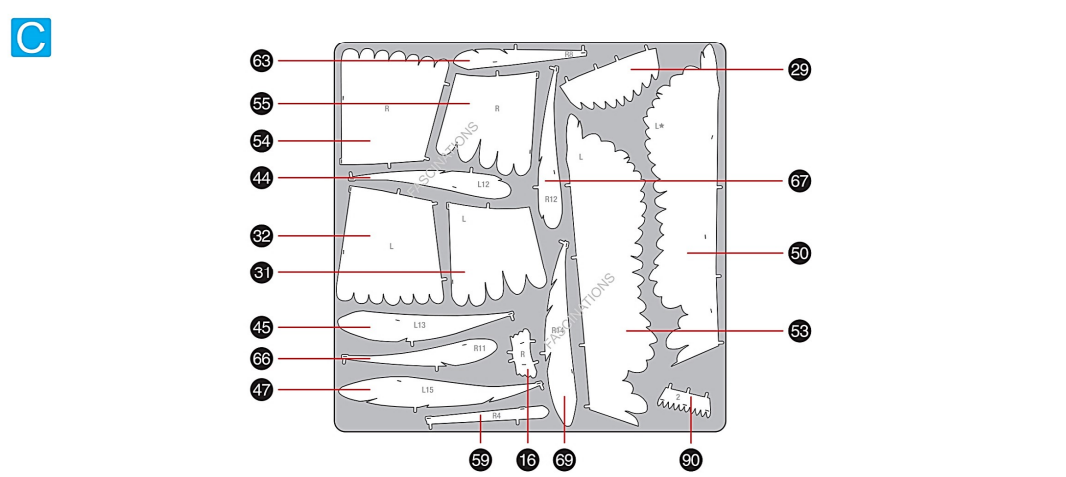
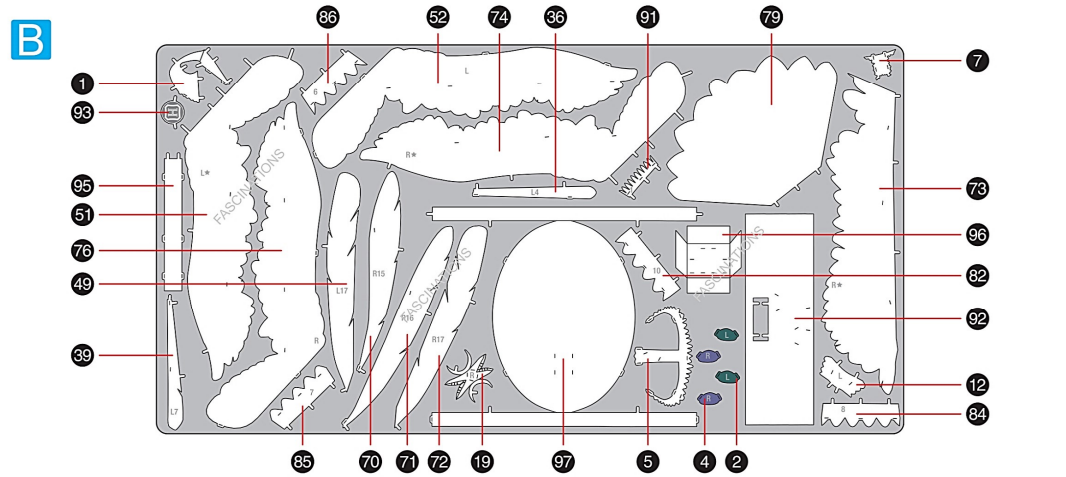
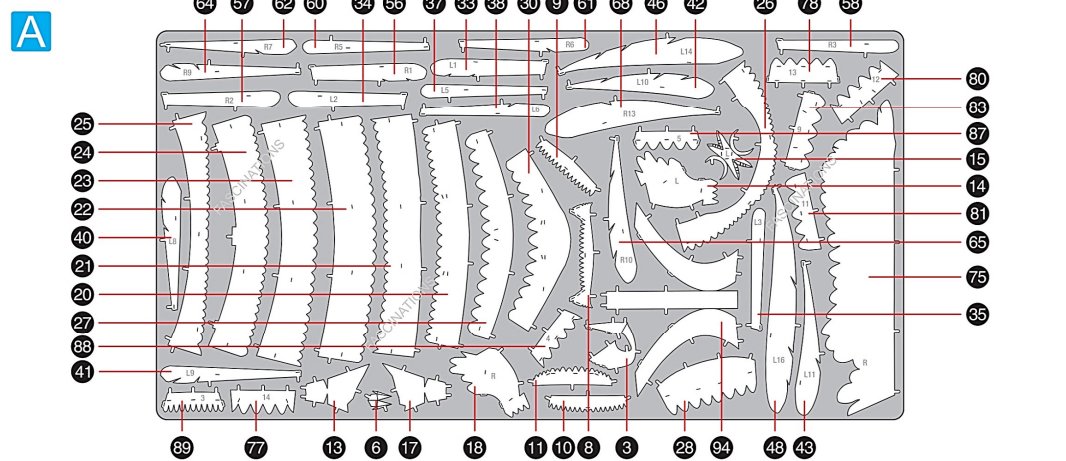


METAL SHEETS

Parts with same color are duplicates

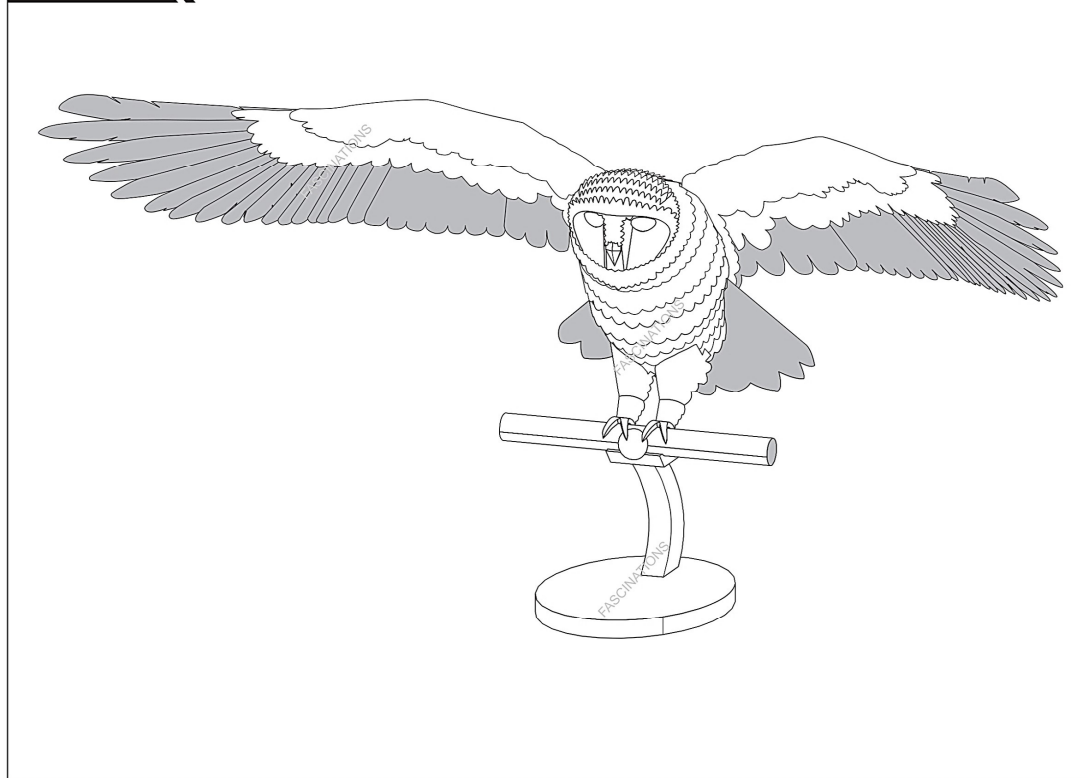


It is highly recommended that you visit www.metalearth.com/360/PS2007 to see the completed model before assembling your own

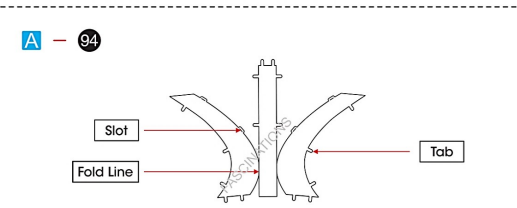
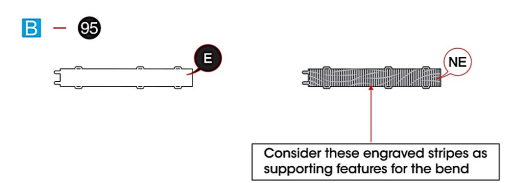
Premium Series

PS2007

HEDWIG



TO CREATE THE BEST CONNECTIONS



Legends:

- Engraved
- Non - engraved
- Attention point
- Insert tab and bend 90 degrees
- Insert tab and twist 90 degrees

Assembly tip:

- If needed, slightly twist tabs to hold parts together then untwist and bend them down for a nice finish.
- Yellow areas should be curled
- Red areas should be folded

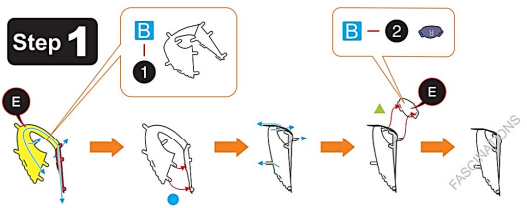
In order to avoid possible injury from sharp edges, please carefully discard the metal sheets after parts have been removed.

Recommended tools:

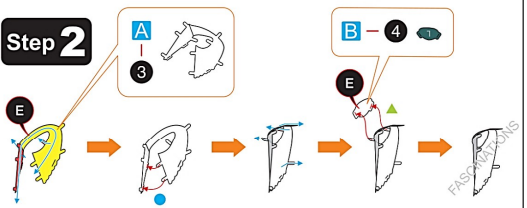
- Wire cutters: helpful for taking parts from the metal sheets.
- Tweezers or needle nose pliers: helpful for folding parts, bending and twisting tabs.

ASSEMBLY STEPS

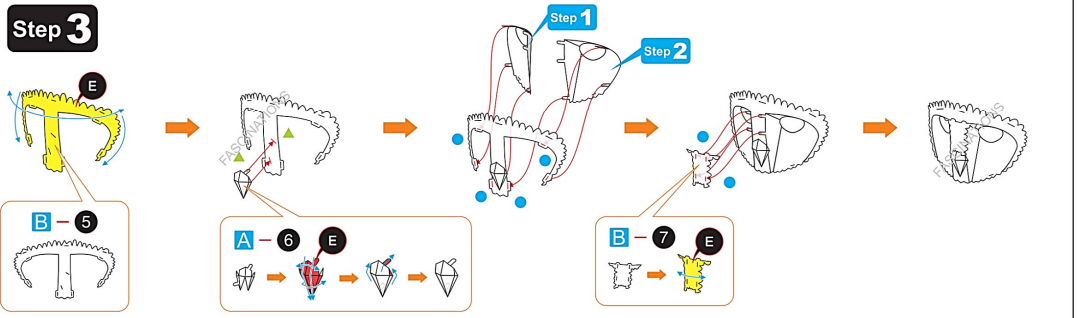
Step 1



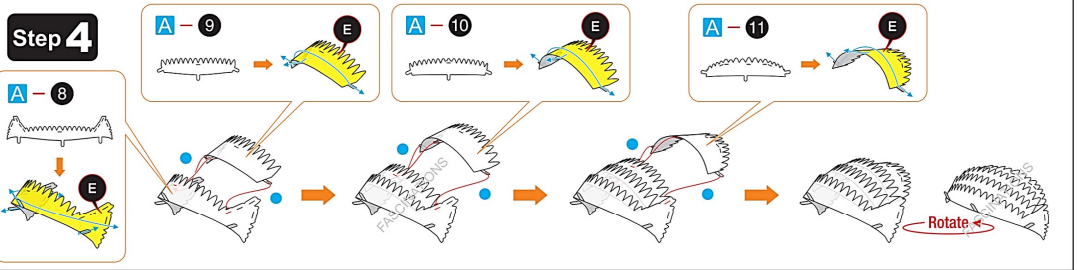
Step 2



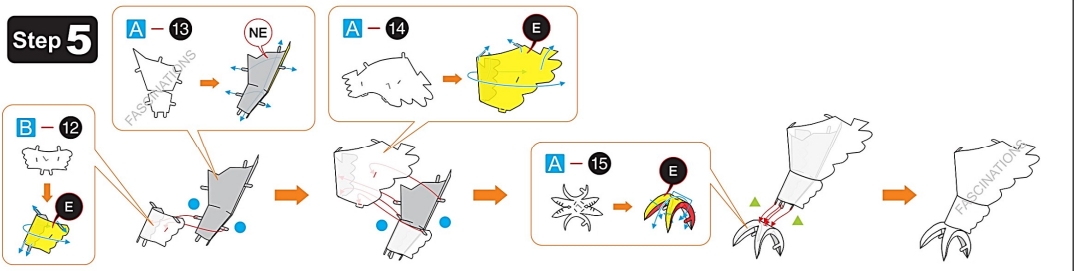
Step 3



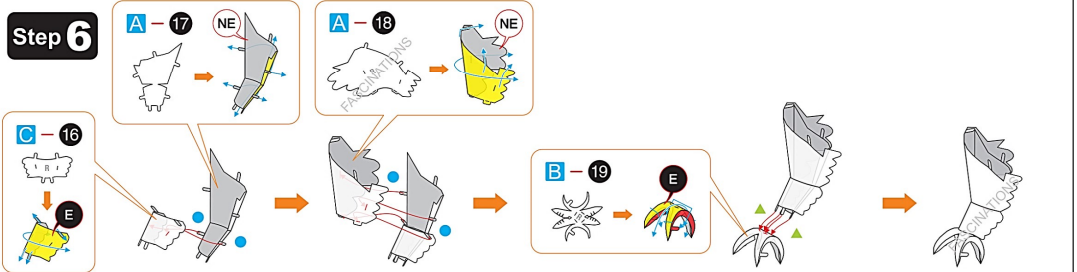
Step 4



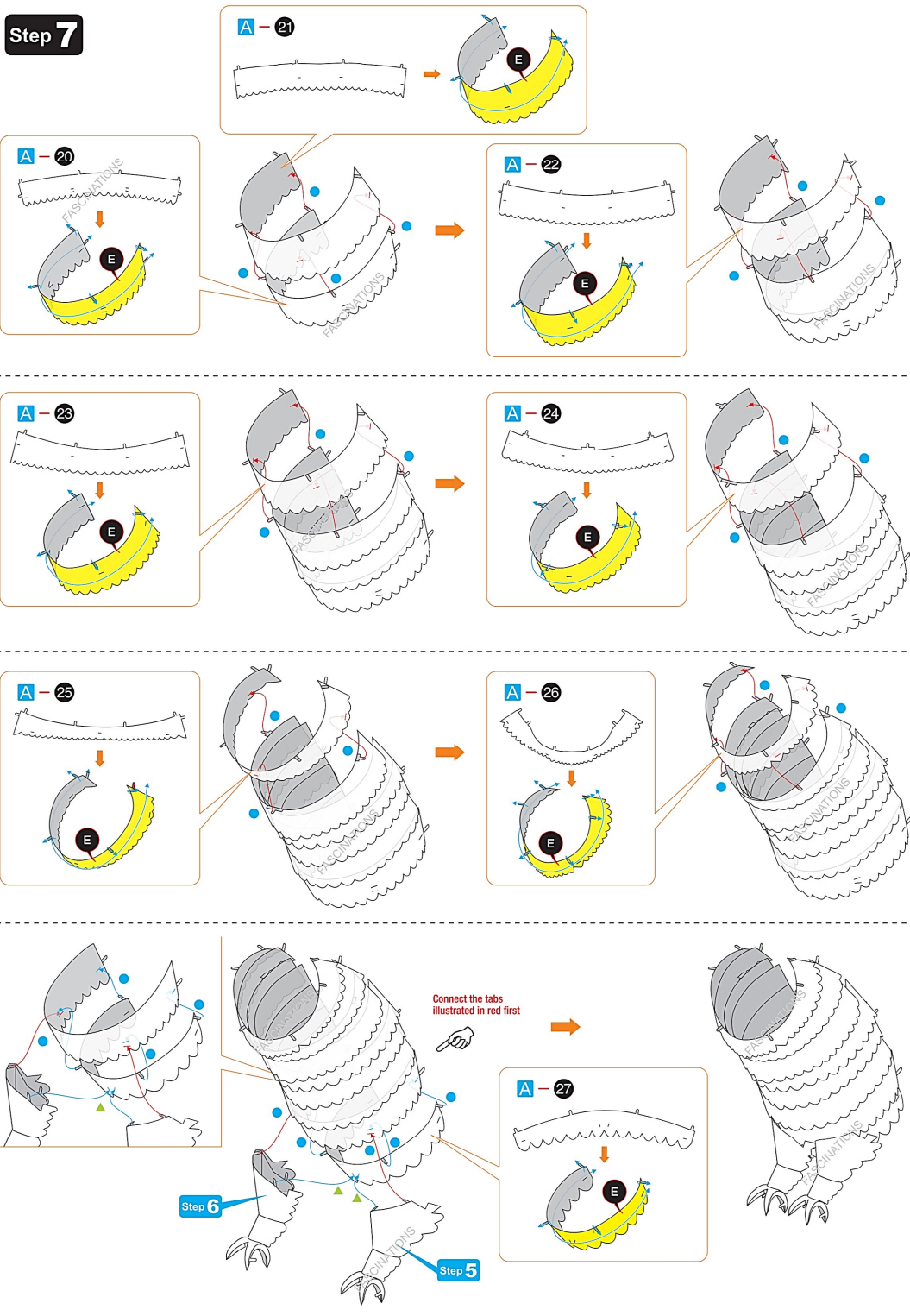
Step 5



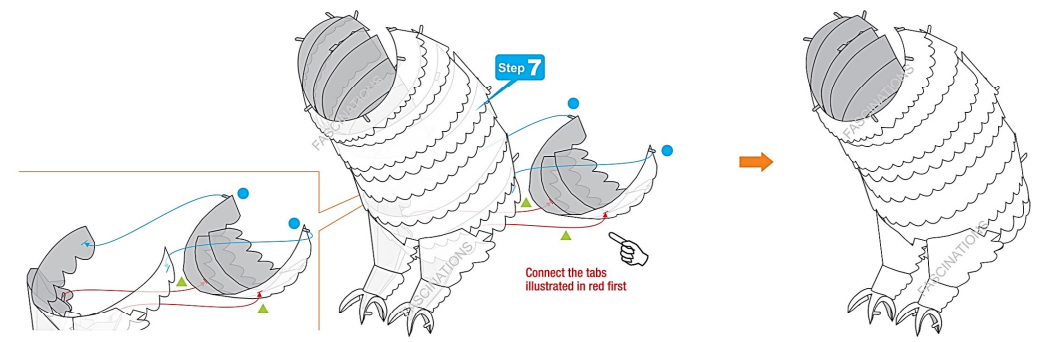
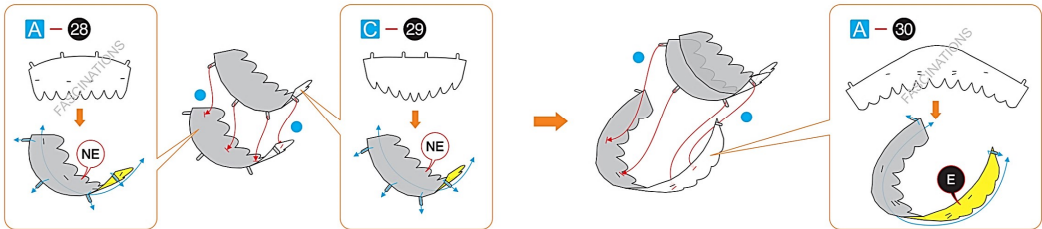
Step 6



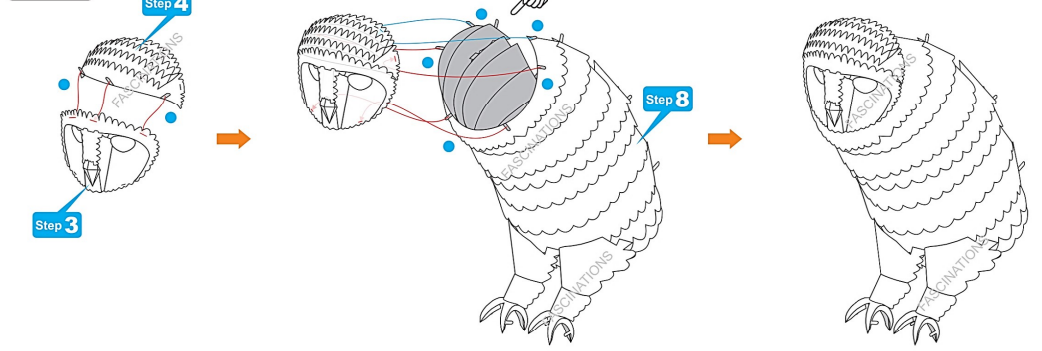
Step 7



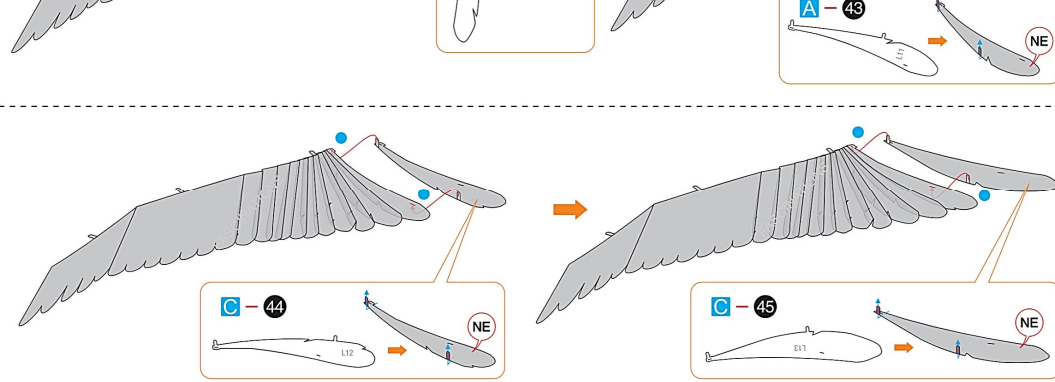
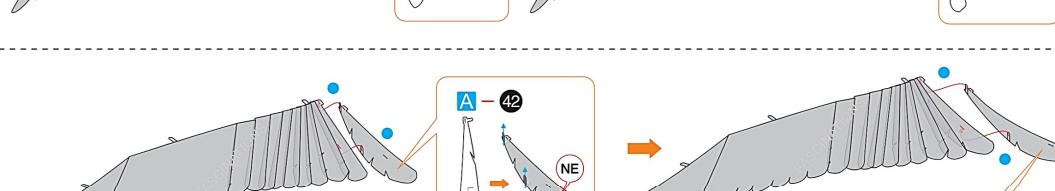
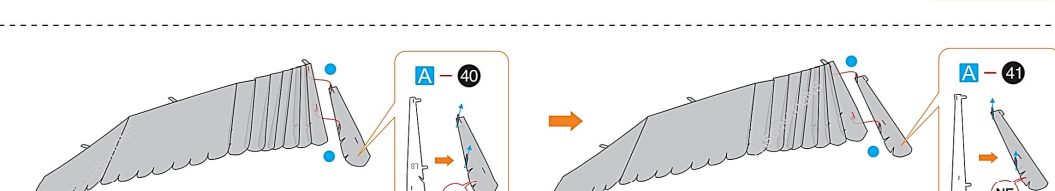
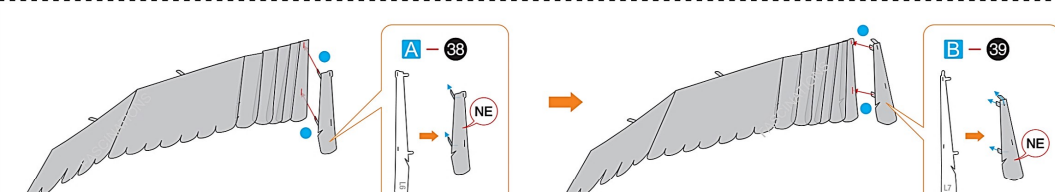
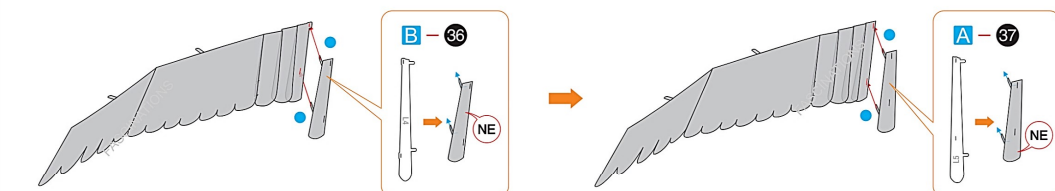
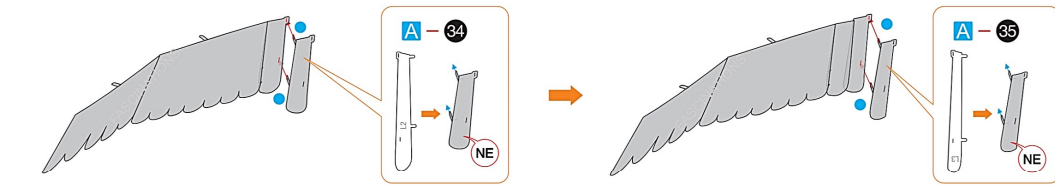
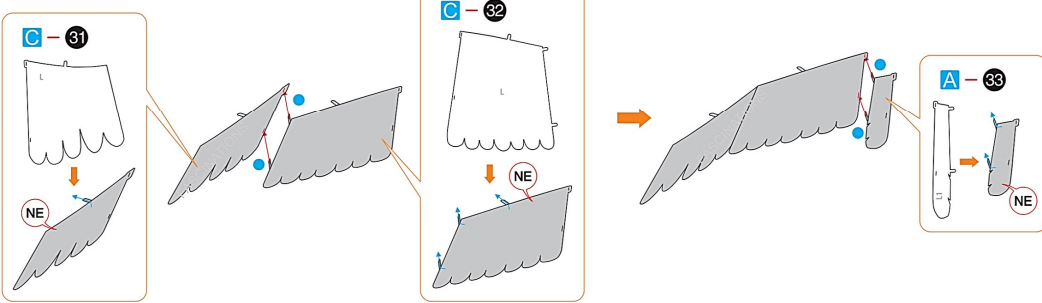
Step 8

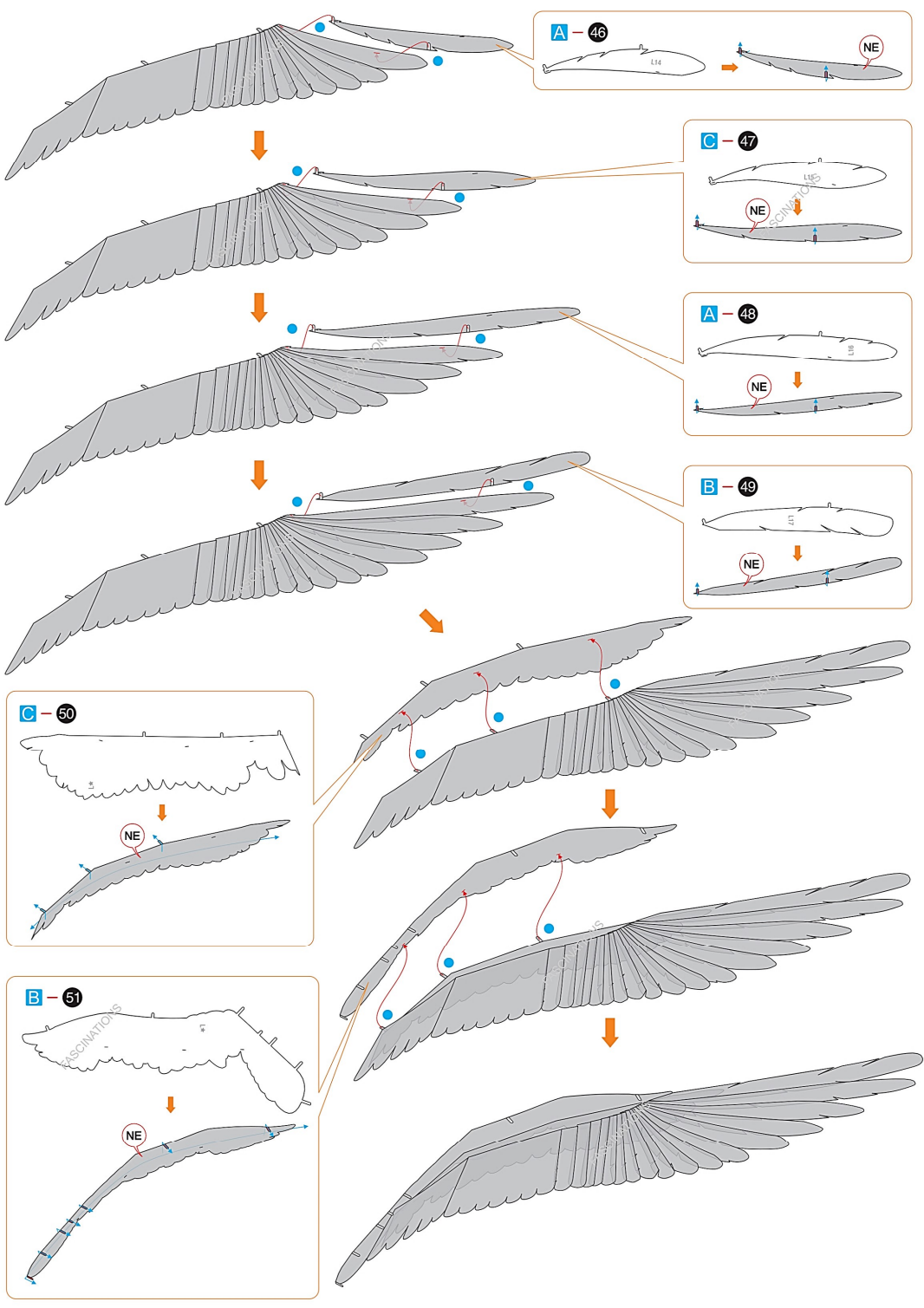


Step 9

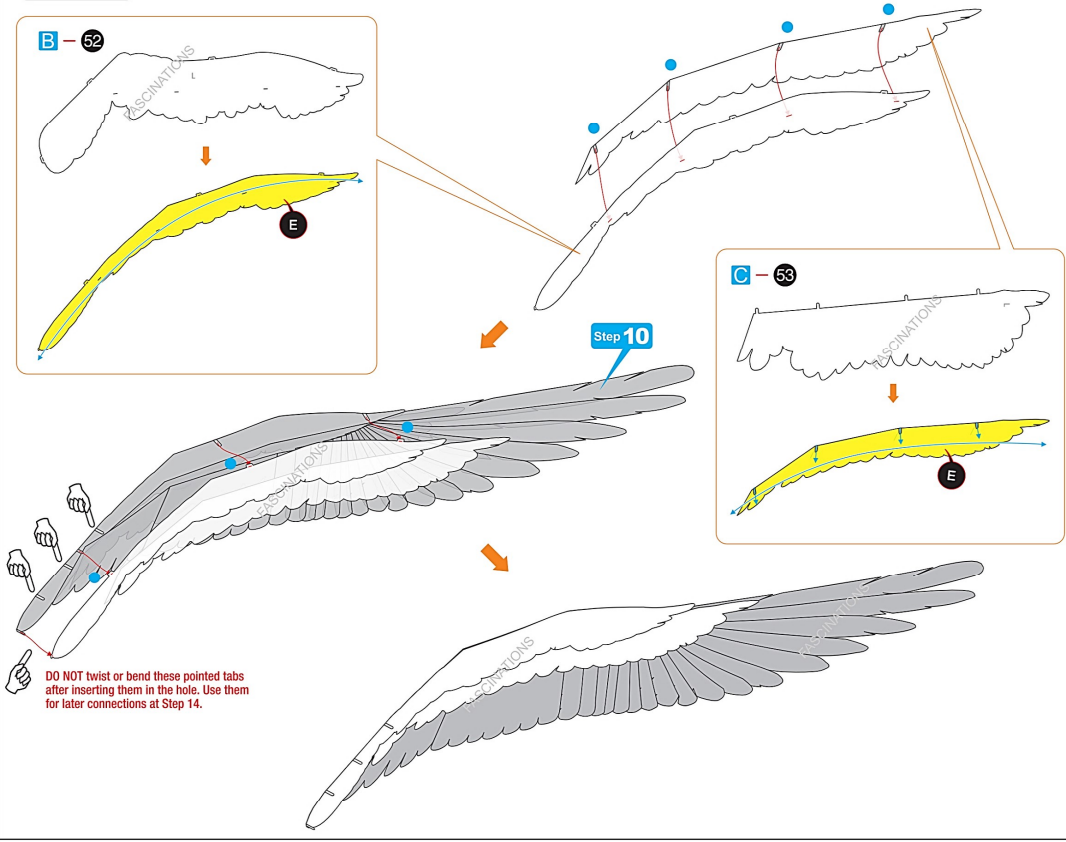


Step 10

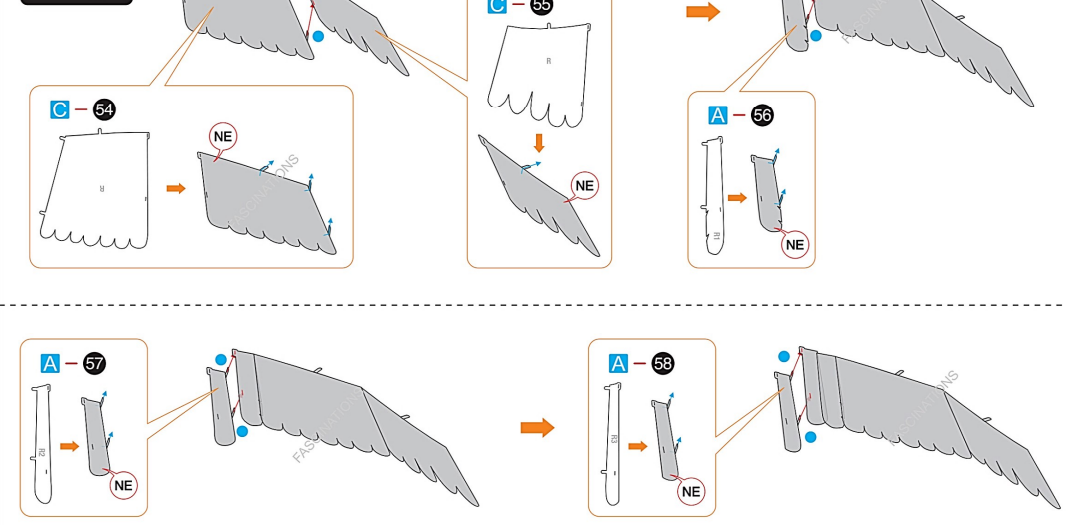


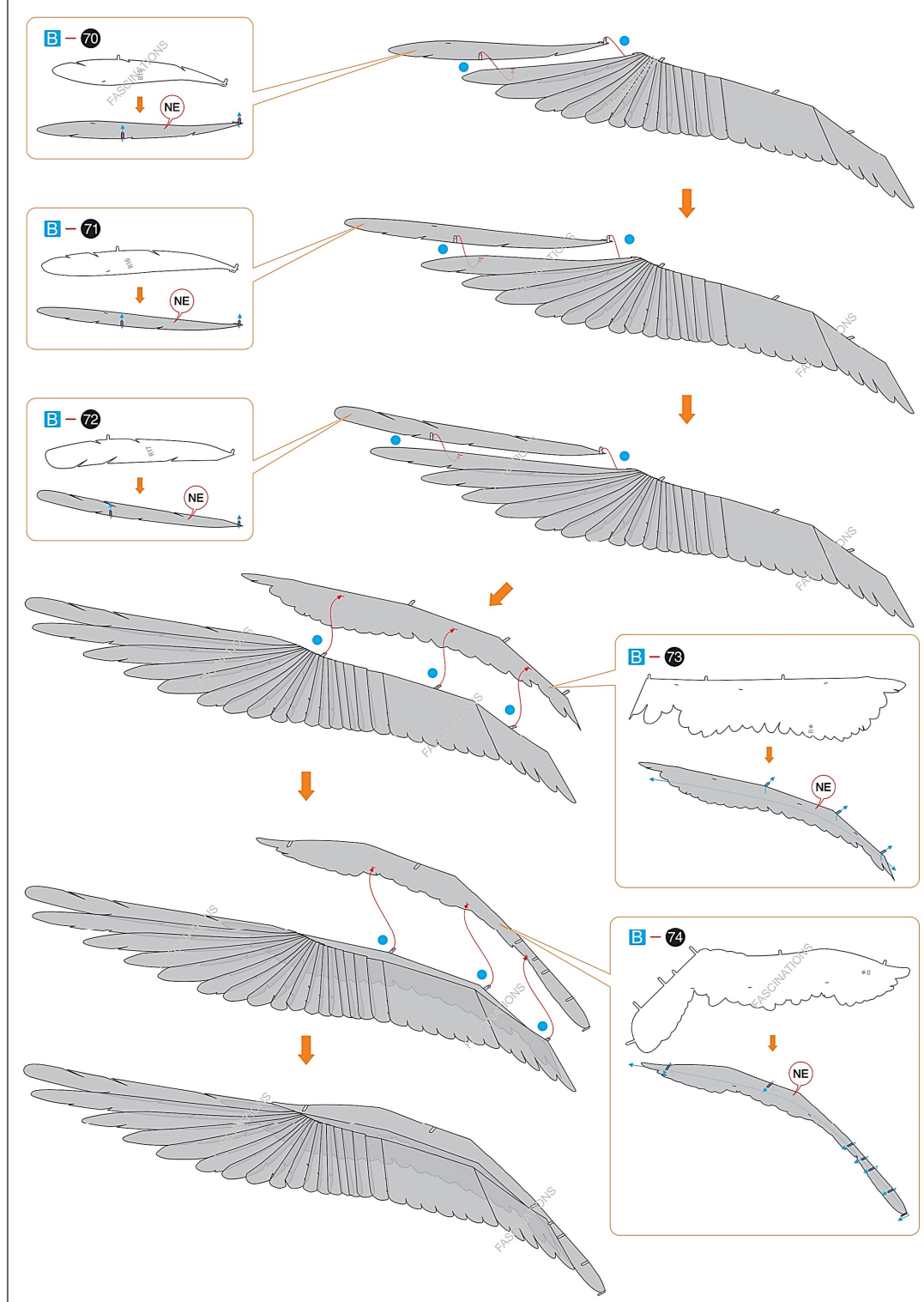
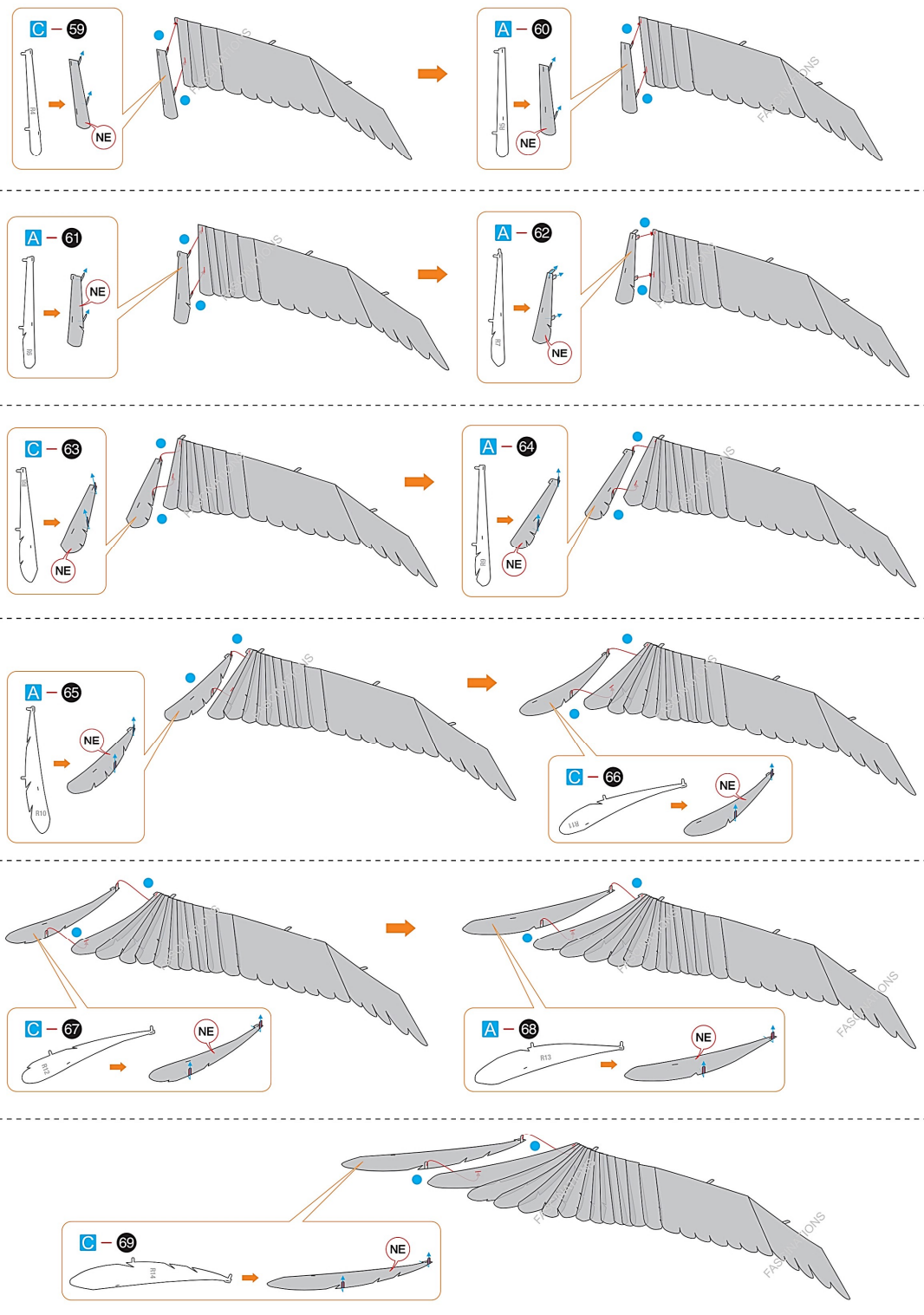


Step 11

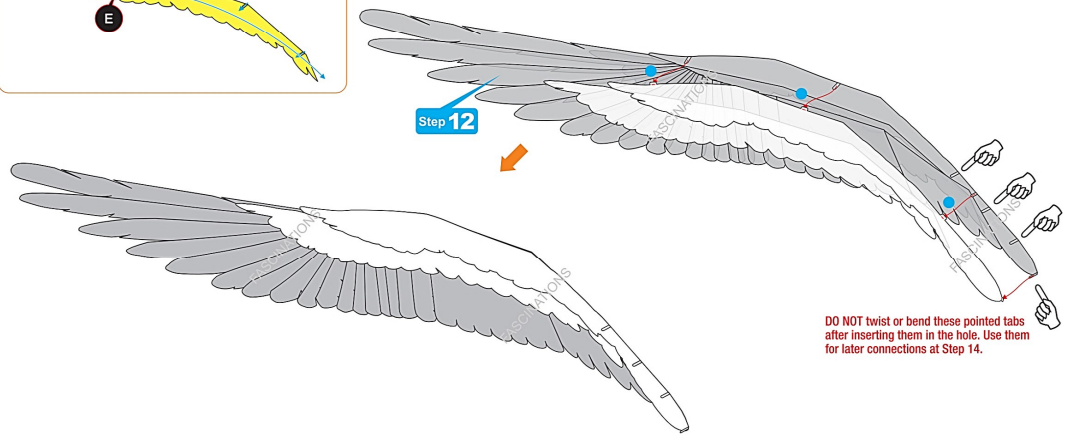
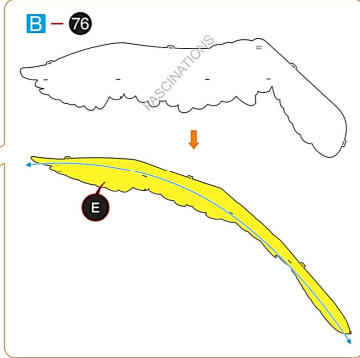
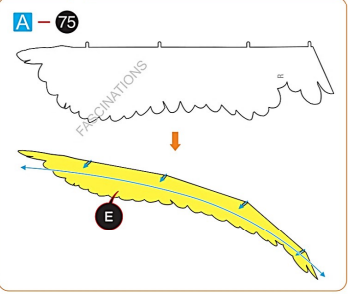


Step 12

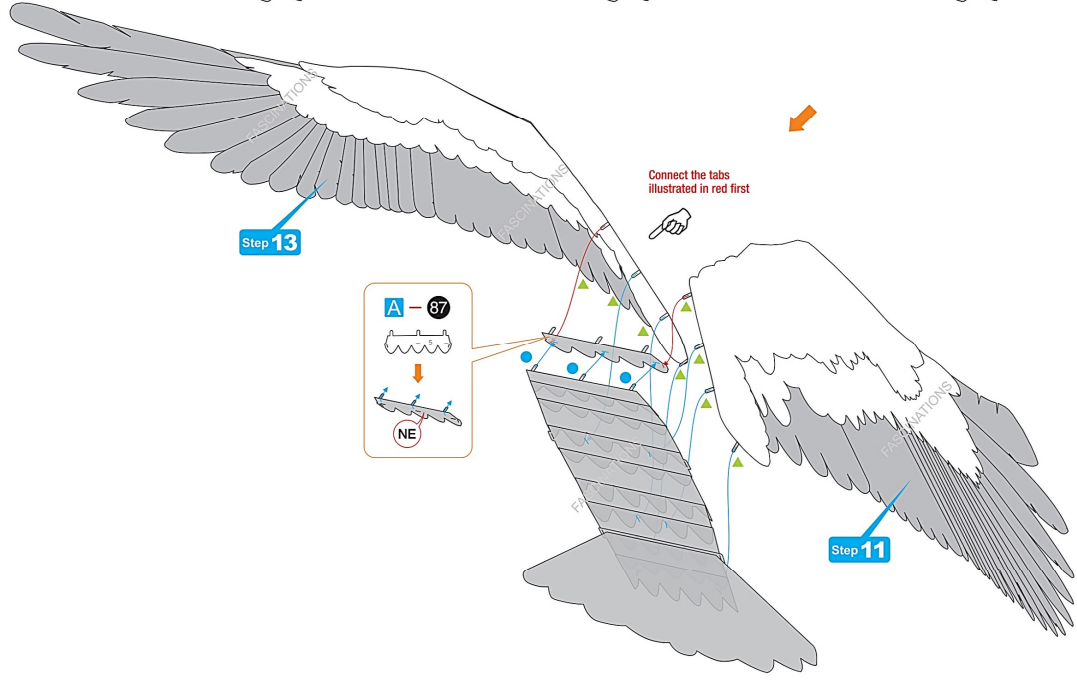
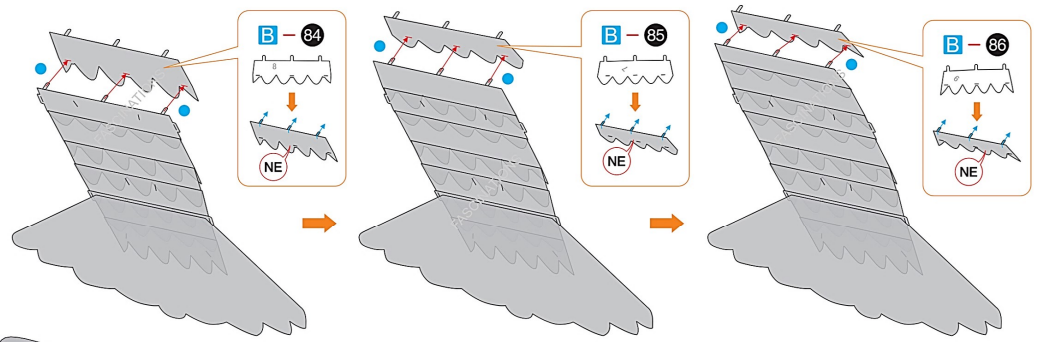
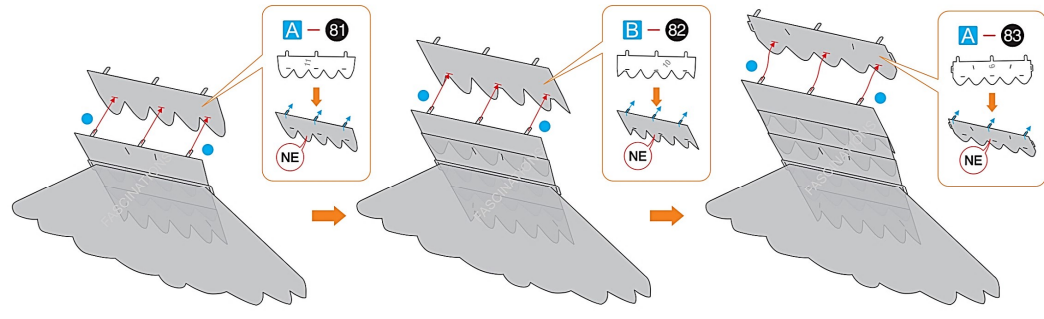
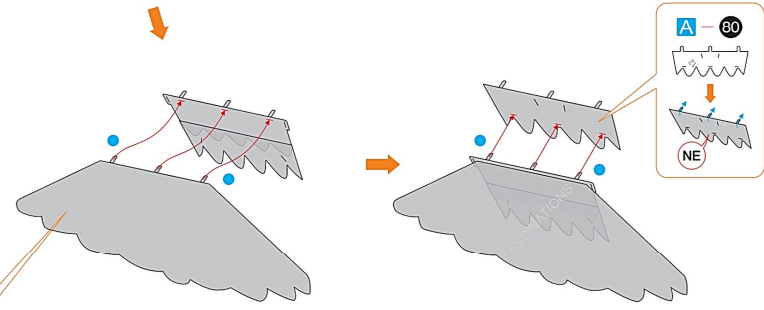
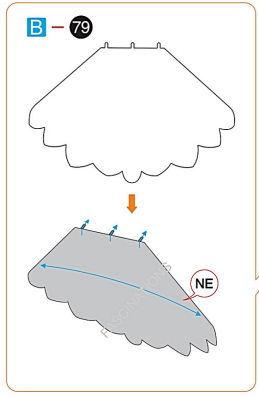
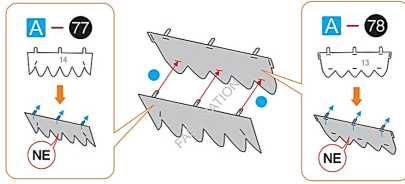


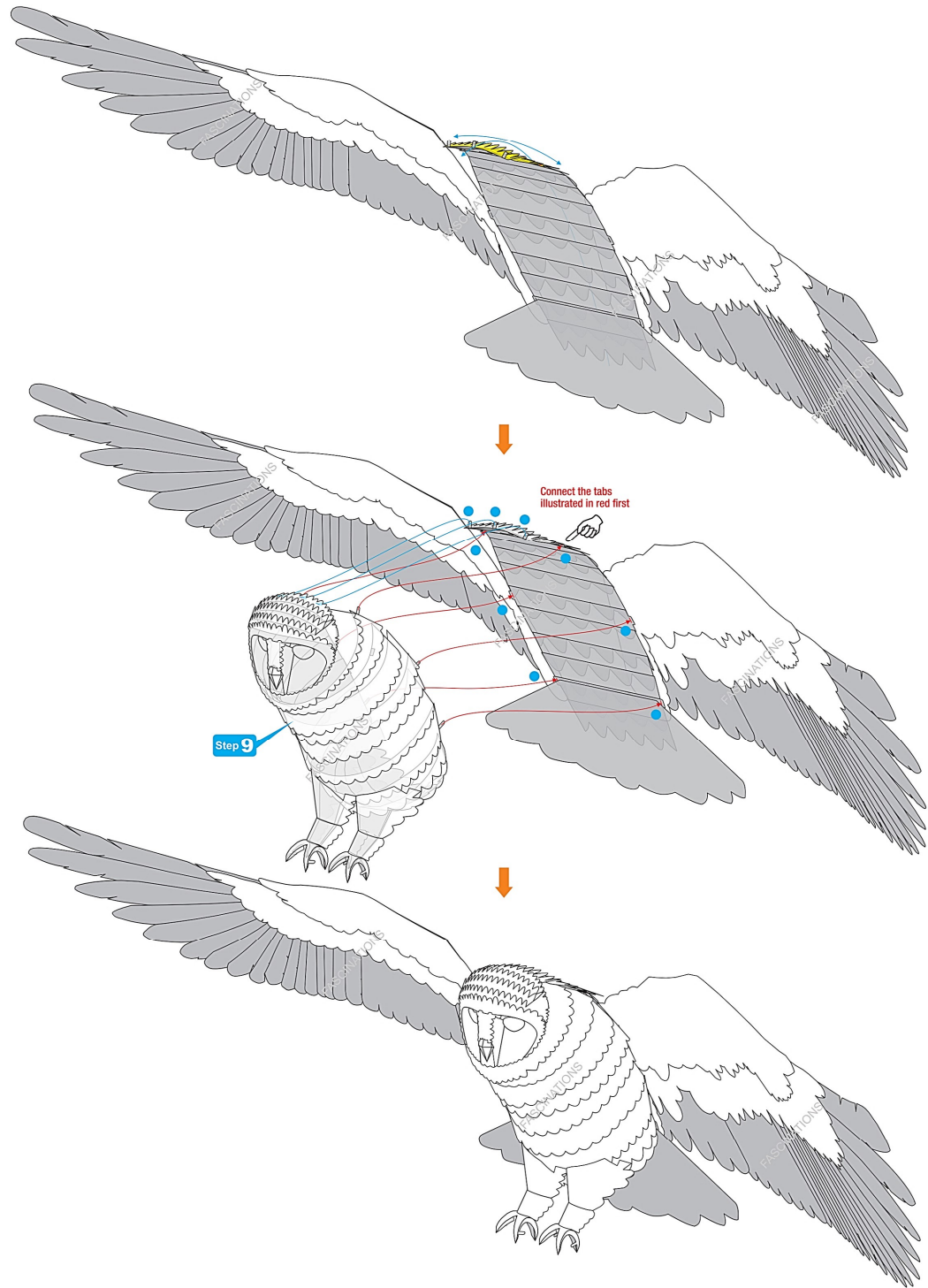
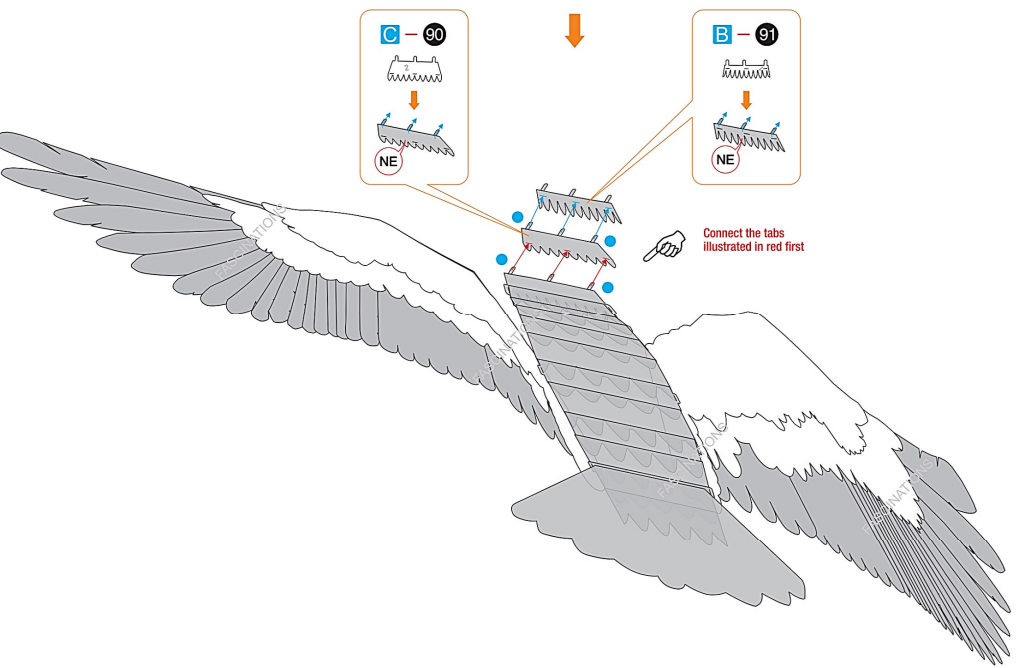
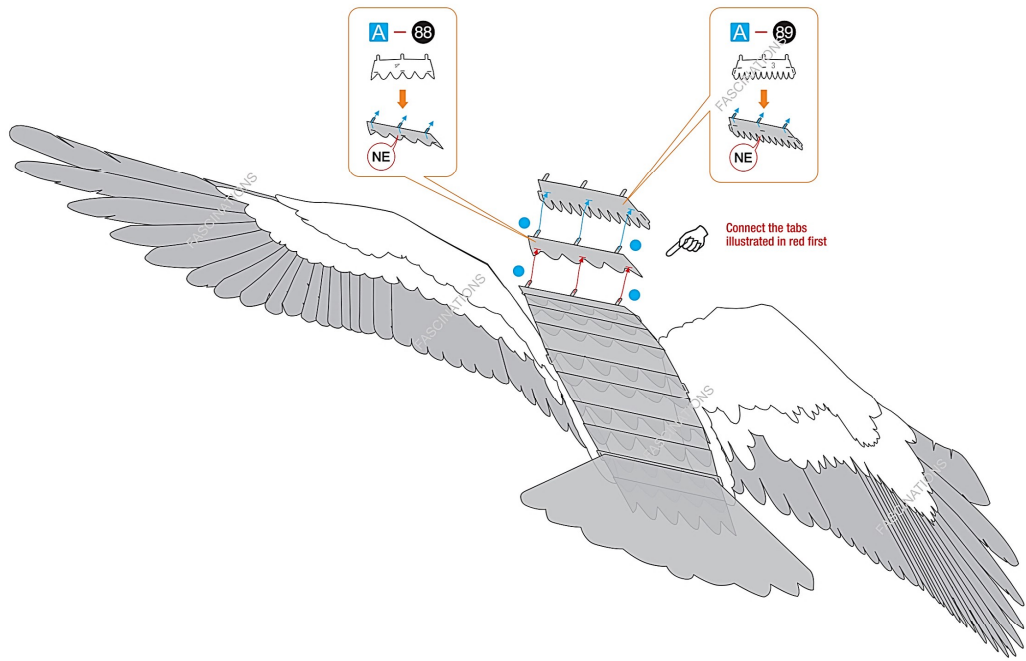


Step 13

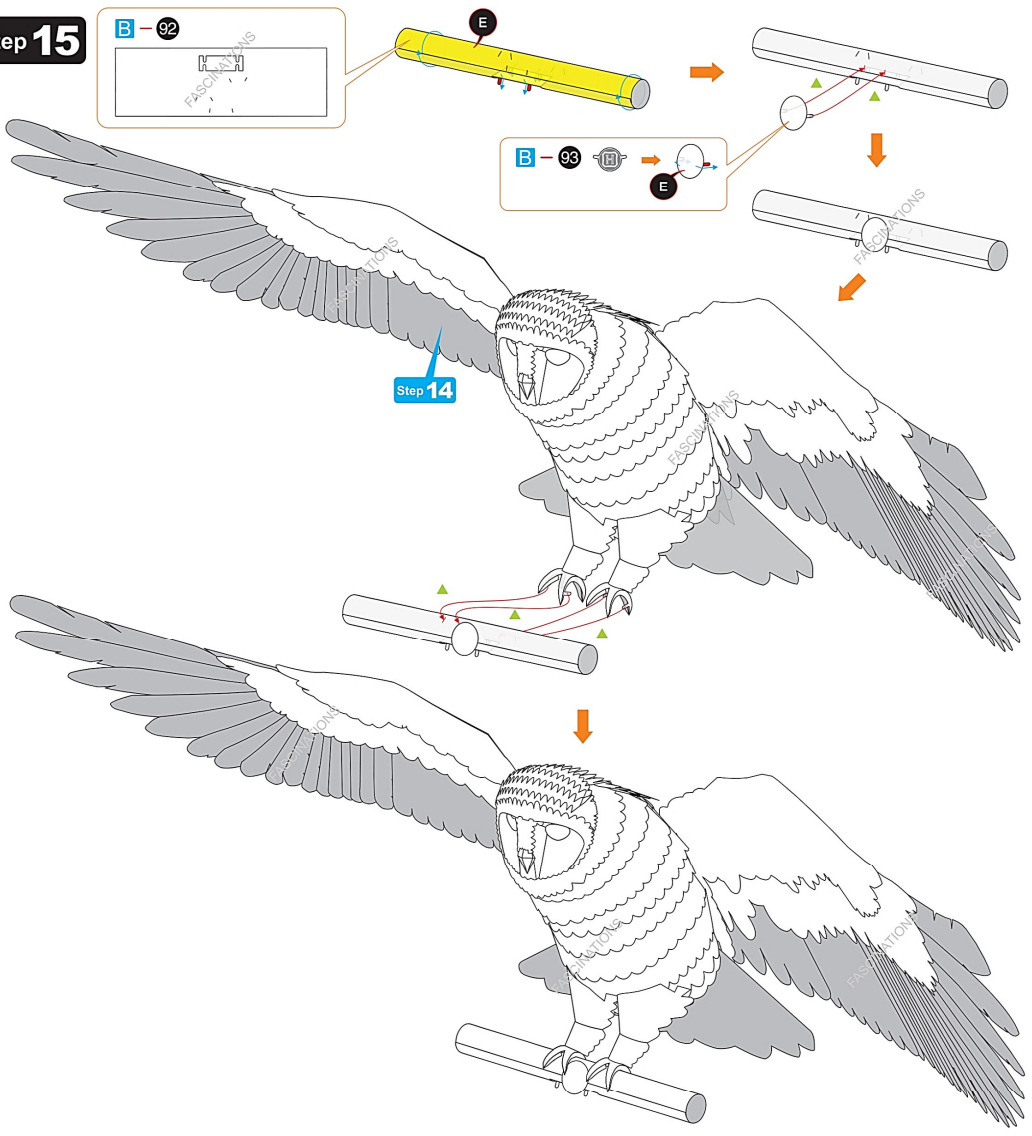


Step 14

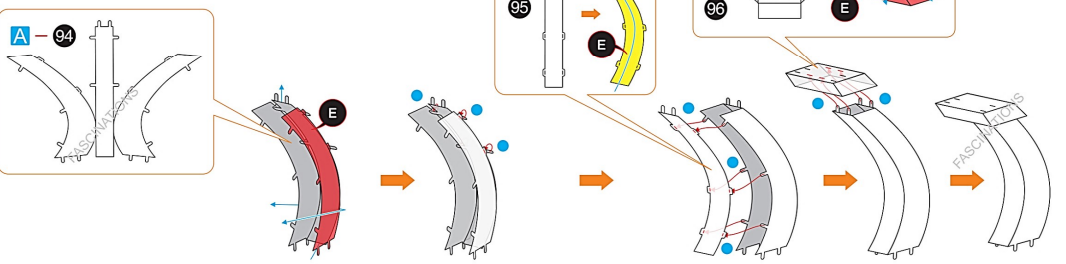




Step 15



Step 16



Step 17

